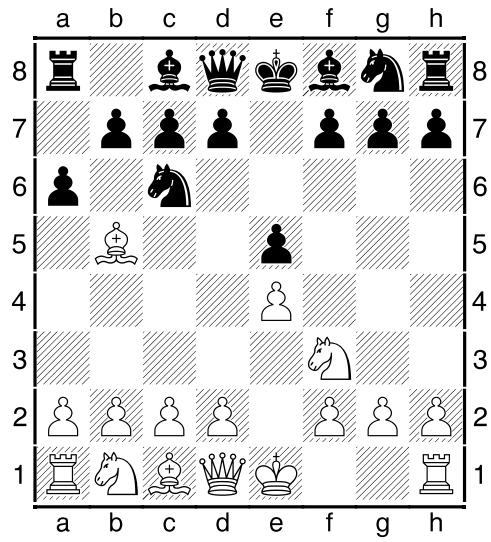
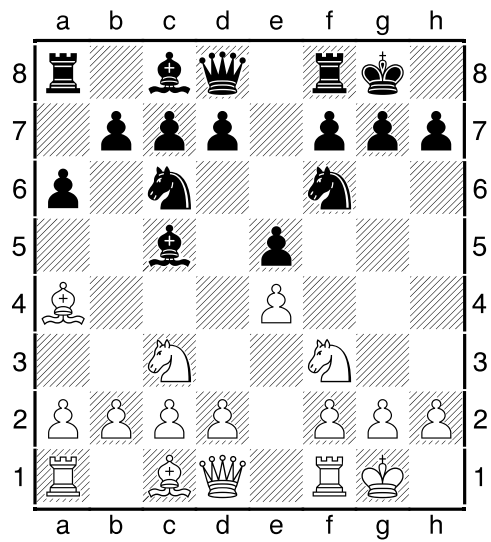


Enter New Game

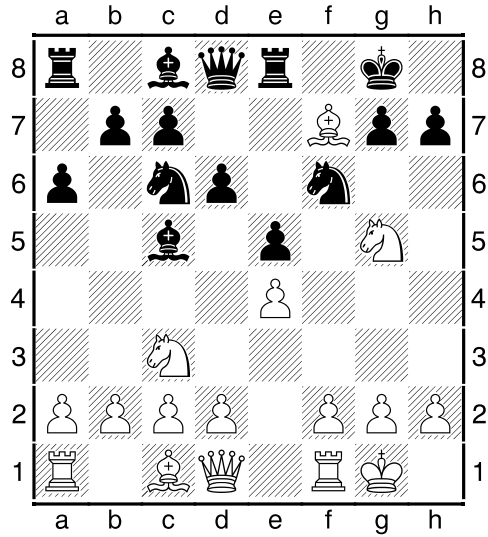
1.e4 e5 2.Nf3 Nc6 3.Bb5 a6



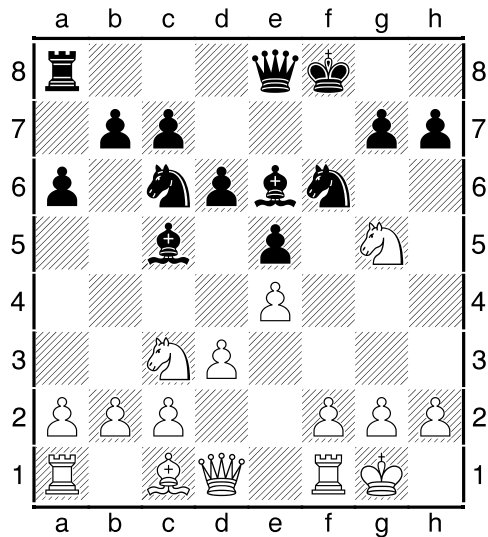
4.Ba4 Nf6 5.Nc3 Bc5 6.0-0 0-0



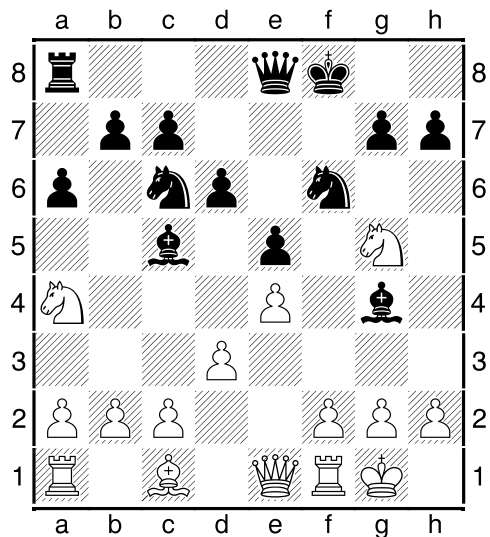
7.Bb3 Re8 8.Ng5 d6 (Missed the attack in f7 square) 9.Bxf7+ Kf8 (Instead of Bishop,Knight is better to capture)



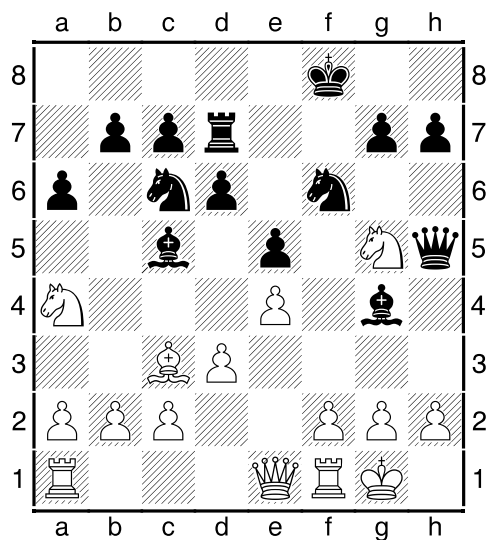
10.Bxe8 Qxe8 11.d3 Be6 12.Na4(Don't move your knight away from center) Bg4



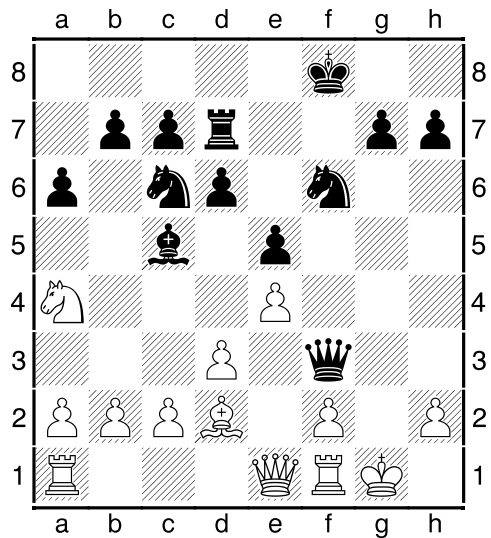
13.Qe1 [13.Nxh7+ Nxh7 (13...Kg8 14.Nxf6+ gxf6 15.Qxg4+; 13...Kf7) 14.Qxg4]



13...Rd8 14.Bd2 Rd7 15.Bc3 Qh5



16.Nf3 Bxf3 17.gxf3 Qxf3 18.Bd2 Ng4



Line