



# MS SQL Server 2008 Express Edition Step by Step Installation Guide

By Umasankar Natarajan



## 1) Download the software depend on your operating system version (32 bit or 64 bit)

Microsoft® SQL Server® 2008 R2 SP2 - Express Edition

<https://www.microsoft.com/en-us/download/details.aspx?id=30438>

Microsoft® SQL Server® 2008 Management Studio Express

<https://www.microsoft.com/en-in/download/details.aspx?id=7593>

During installation, if asked for following dependent software, download using the below link

Microsoft .NET Framework 3.5 SP1 (Offline installation package) is available at

<https://www.microsoft.com/en-in/download/details.aspx?id=25150>

Microsoft .NET Framework 3.5 SP1 (Online installation package) is available at

<https://www.microsoft.com/en-in/download/details.aspx?id=22>

Microsoft Windows Installer 4.5 is available at

<https://www.microsoft.com/en-in/download/details.aspx?id=8483>

<https://www.microsoft.com/en-in/download/details.aspx?id=30438>

### Microsoft® SQL Server® 2008 R2 SP2 - Express Edition

Select Language: English

Check your laptop Operating system version 32 bit or 64 bit?  
Download below software according to OS version

Microsoft SQL Server 2008 R2 Express with Service Pack 2 is a free and feature-rich database for developing and deploying SQL Server 2008 R2.

Details

Note: There are multiple files available for this download. Once you click on the "Download" button, you will be prompted to select the files you need.

File Name	File Size
SQLSEXP_x86_ENU.exe	110.4 MB
SQLSEXP_x64_ENU.exe	122.4 MB
SQLSEXP32_x86_ENU.exe	97.4 MB
SQLSEXPADV_x64_ENU.exe	1,008.6 MB
SQLSEXPADV_x86_ENU.exe	894.1 MB
SQLSEXPRTW_x64_ENU.exe	340.5 MB
SQLSEXPRTW_x86_ENU.exe	318.4 MB
SQLManagementStudio_x64_ENU.exe	161.0 MB
SQLManagementStudio_x86_ENU.exe	158.3 MB

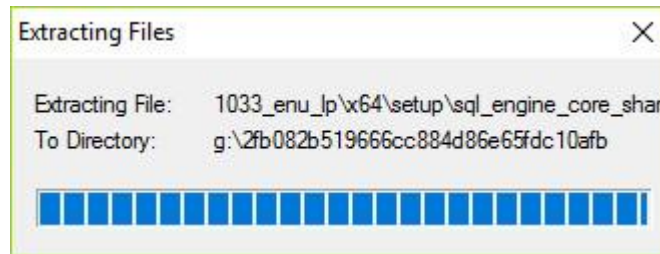
Download SQL Server Enterprise Edition 32 Bit  
Download SQL Server Enterprise Edition 64 Bit  
Download SQL Management Studio 32 Bit  
Download SQL Management Studio 64 Bit

2) Make sure you logged in as Administrator, Double click the downloaded software. Select version based on your Operating system

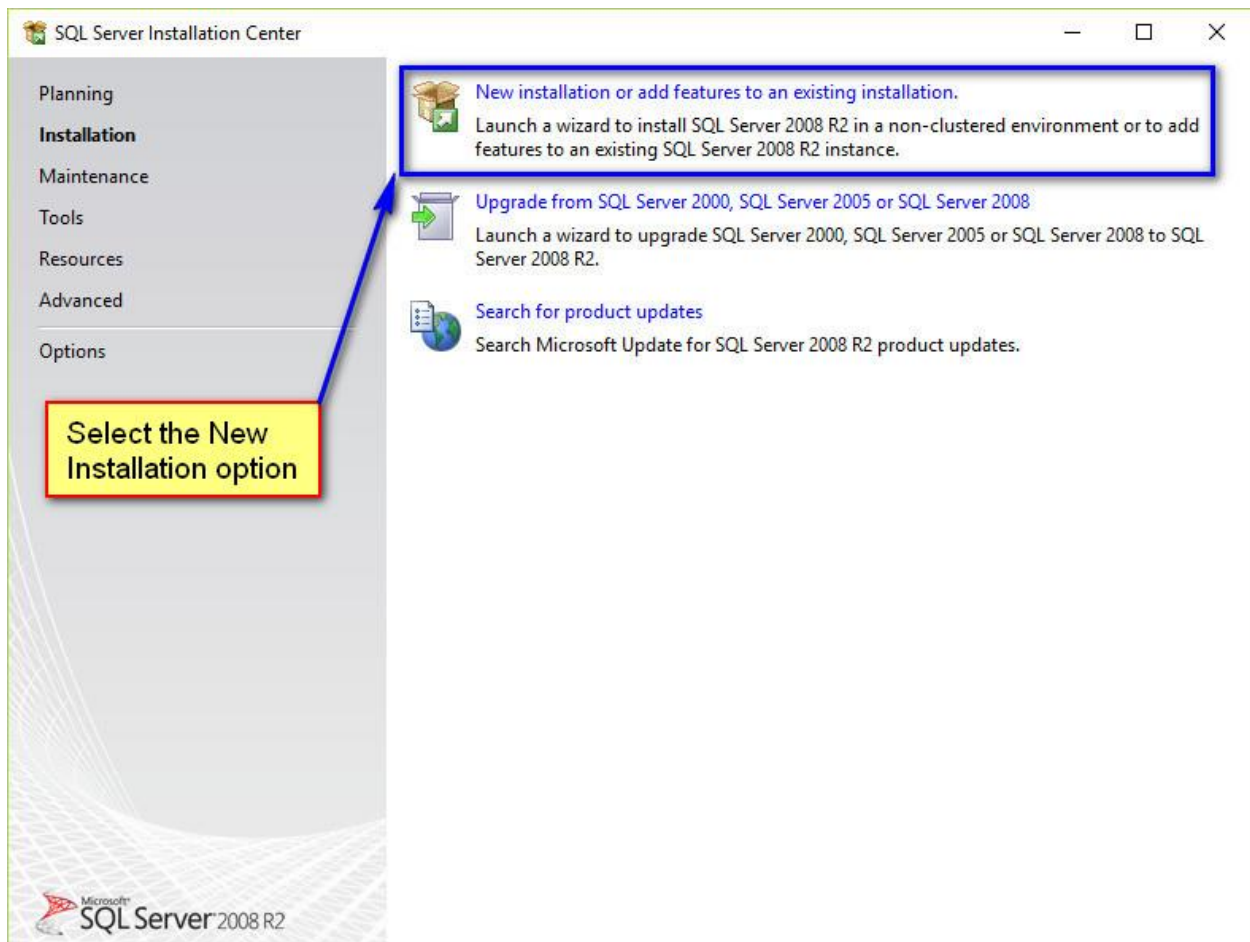
- SQLEXPRESS\_x64\_ENU.exe → for 64 bit Operating system
- SQLEXPRESS\_x86\_ENU.exe → for 32 bit Operating system

SQLEXPRESS_x64_ENU.exe	5/24/2017 3:22 PM	Application	125,324 KB
SQLEXPRESS_x86_ENU.exe	5/24/2017 1:18 PM	Application	97,620 KB

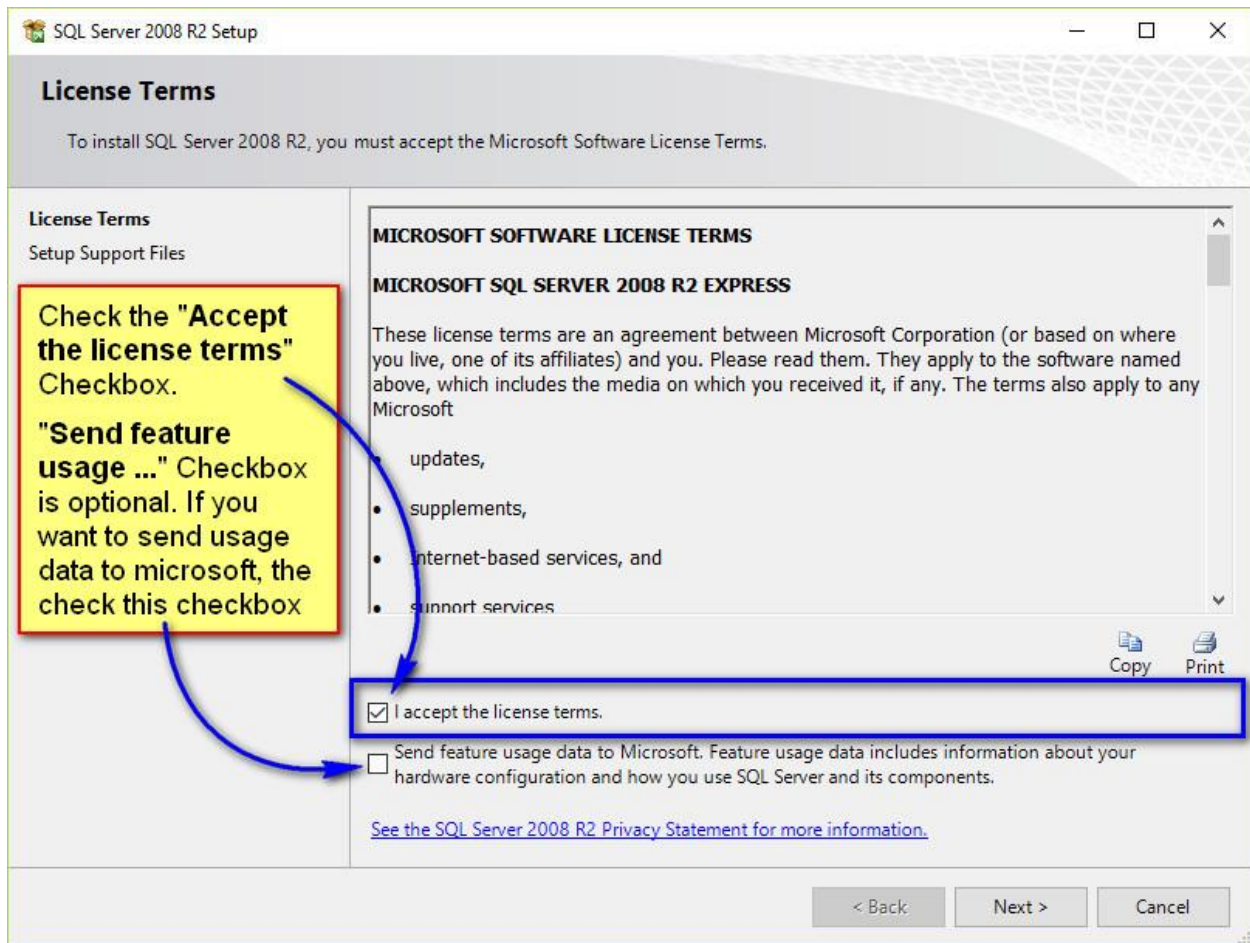
3) Package will be extracted as show below



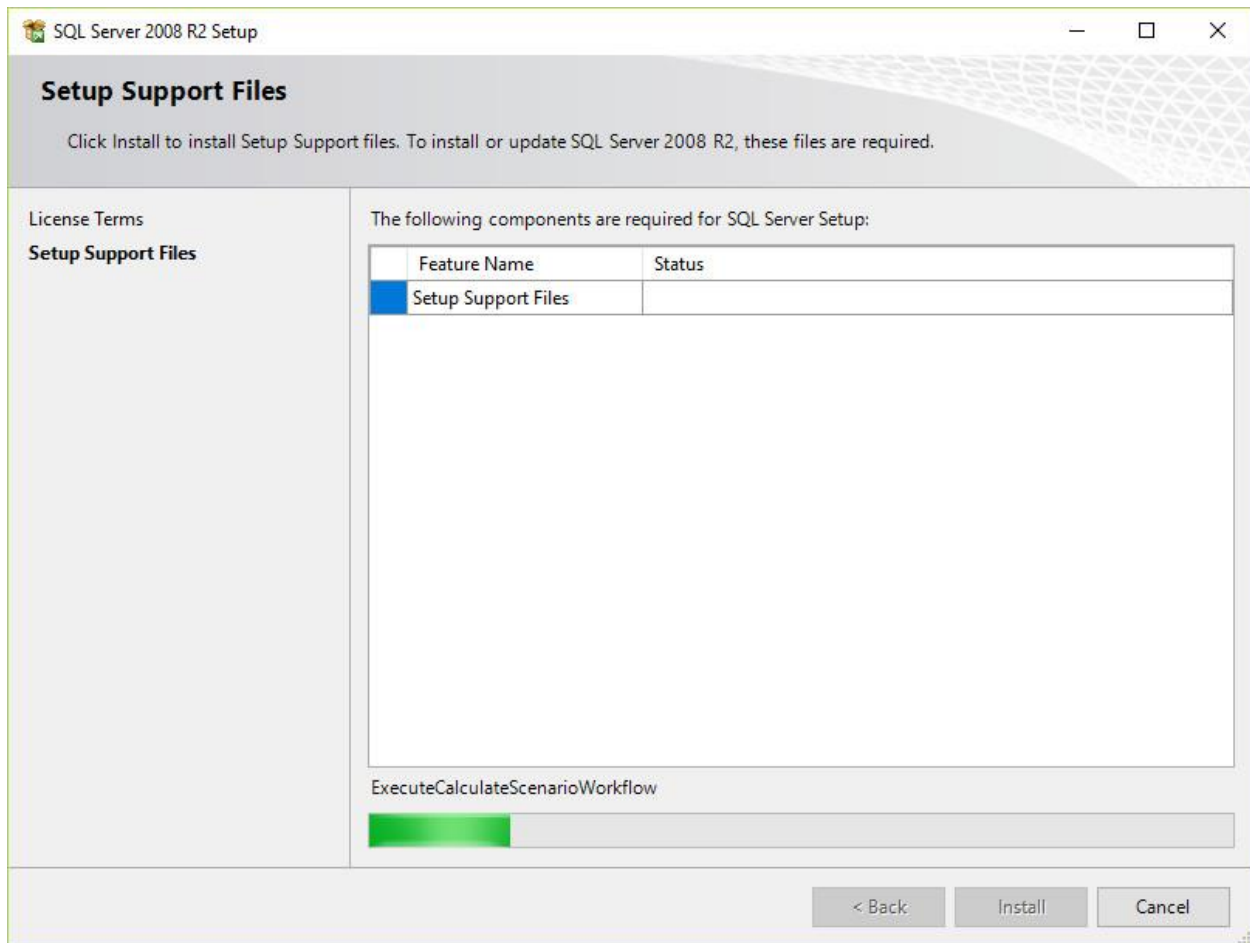
4) In SQL Server Installation Center, Select and Click “New Installation ...” option



5) Click checkbox "Accept the license terms" and click "Next" button



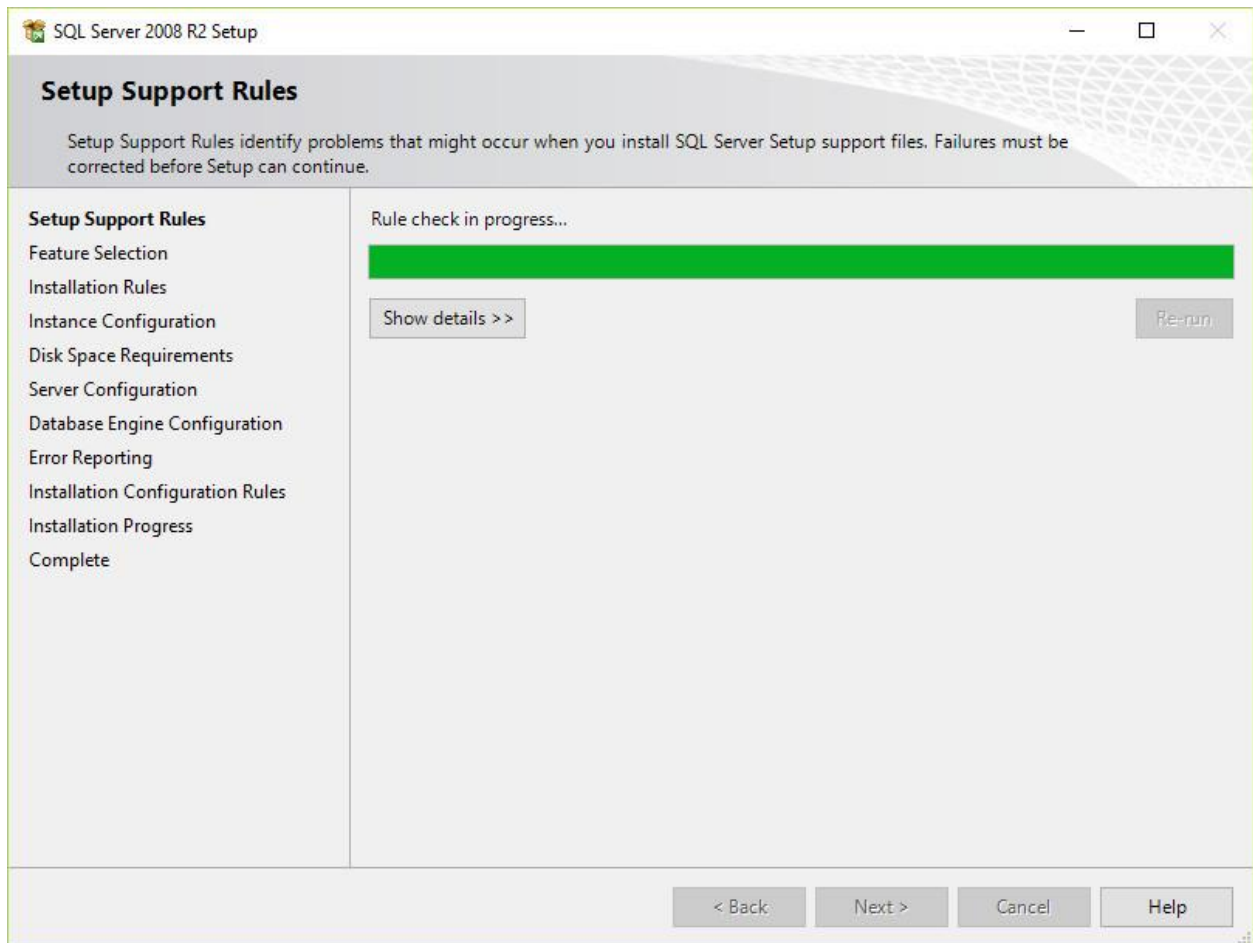
## 6) Click "Install" button



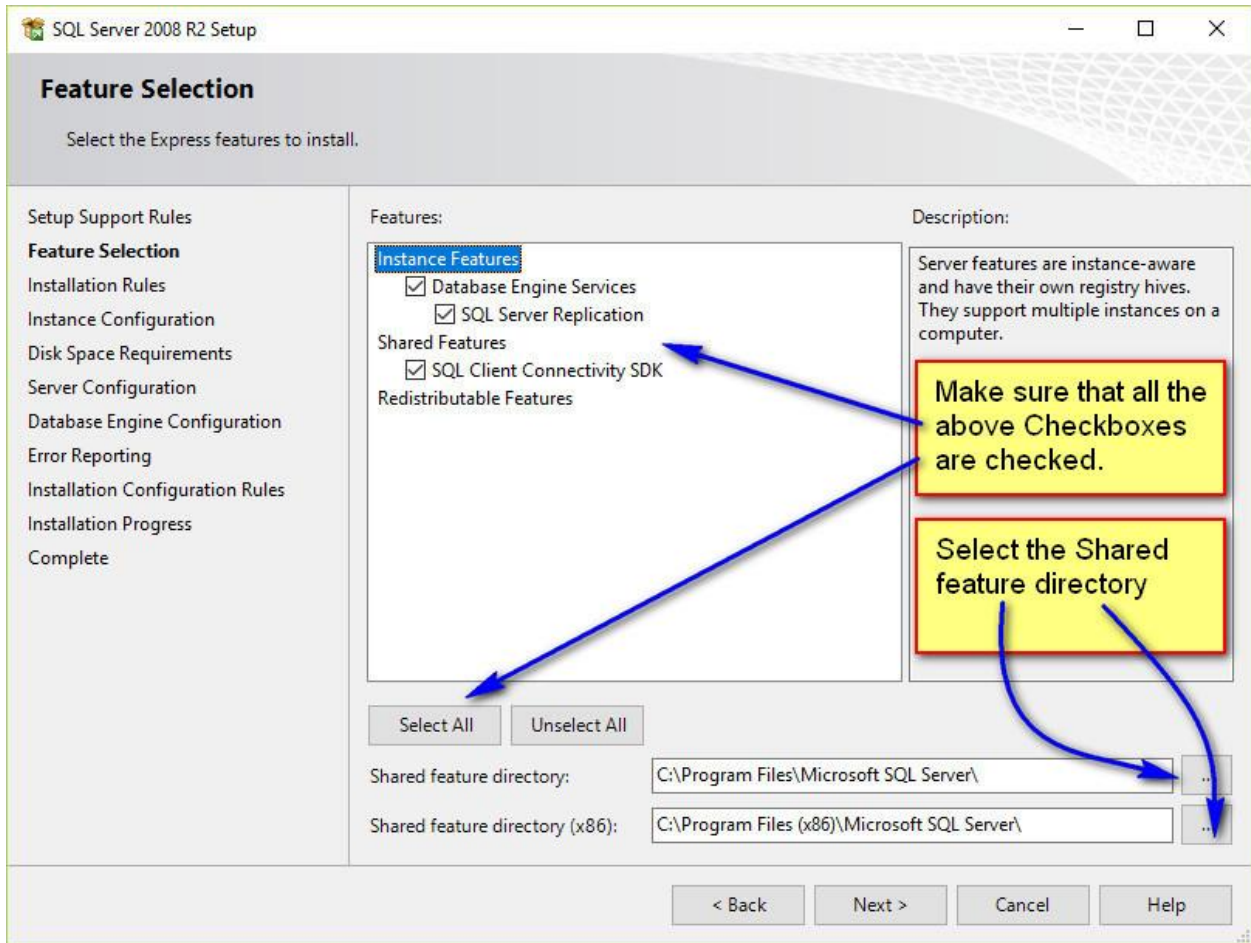
## 7) Wait for some time to complete the current operation



## 8) Click "Next" button to Run Rule check



9) Click "Select All" button to select All the checkboxes and Click "Next" button



10) Select “Default instance or Named instance” of your choice. Provide instance name in case of Named instance and click “Next” button

SQL Server 2008 R2 Setup

### Instance Configuration

Specify the name and instance ID for the instance of SQL Server. Instance ID becomes part of the installation name.

Default instance

Named instance:

Instance ID:

Instance root directory:

SQL Server directory: C:\Program Files\Microsoft SQL Server\MSS

Installed instances:

Instance Name	Instance ID	Features	Edition	Version
---------------	-------------	----------	---------	---------

< Back    Next >    Cancel    Help

You can use the default instance or Named Instance.

In case of Named Instance, Provide Instance Name and Instance ID both can be same or different.

Select instance root directory



11) No change required in this screen, click "Next" button

SQL Server 2008 R2 Setup

### Server Configuration

Specify the service accounts and collation configuration.

Setup Support Rules  
Feature Selection  
Installation Rules  
Instance Configuration  
Disk Space Requirements  
**Server Configuration**  
Database Engine Configuration  
Error Reporting  
Installation Configuration Rules  
Installation Progress  
Complete

Service Accounts Collation

Microsoft recommends that you use a separate account for each SQL Server service.

Service	Account Name	Password	Startup Type
SQL Server Database Engine	NT AUTHORITY\NETWORK SERVICE		Automatic
SQL Server Browser	NT AUTHORITY\LOCAL SERVICE		Disabled

Use the same account for all SQL Server services

No change required here. Leave it as default Service

< Back Next > Cancel Help

12) Select Authentication mode. In Windows Authentication Mode, you can use windows login id and password. In Mixed mode, you can use either windows login & password or default userid "sa" with your own password.

The screenshot shows the 'Database Engine Configuration' window in SQL Server 2008 R2 Setup. The window title is 'SQL Server 2008 R2 Setup' and the subtitle is 'Specify Database Engine authentication security, server administrators, and system accounts'. The left sidebar lists various setup steps, with 'Database Engine Configuration' selected. The main area has tabs for 'Account Provisioning', 'Data Directories', 'User Instances', and 'Full Text and Search'. The 'Authentication Mode' section has two radio buttons: 'Windows authentication mode' (selected) and 'Mixed Mode (SQL Server authentication and Windows authentication)'. Below this are fields for 'Enter password:' and 'Confirm password:'. The 'Specify SQL Server administrators' section has a list box containing 'sa' and buttons for 'Add Current User', 'Add...', and 'Remove'. A warning box states 'SQL Server administrators have unrestricted access to the Database Engine.' At the bottom are buttons for '< Back', 'Next >', 'Cancel', and 'Help'. Several yellow callout boxes with red borders and blue arrows provide instructions: one points to the 'Data Directories' tab, another to the 'Authentication Mode' radio buttons, a third to the 'sa' user in the list box, and a fourth to the 'Add...' button.

**Data storage directory can be changed using "Data Directories"**

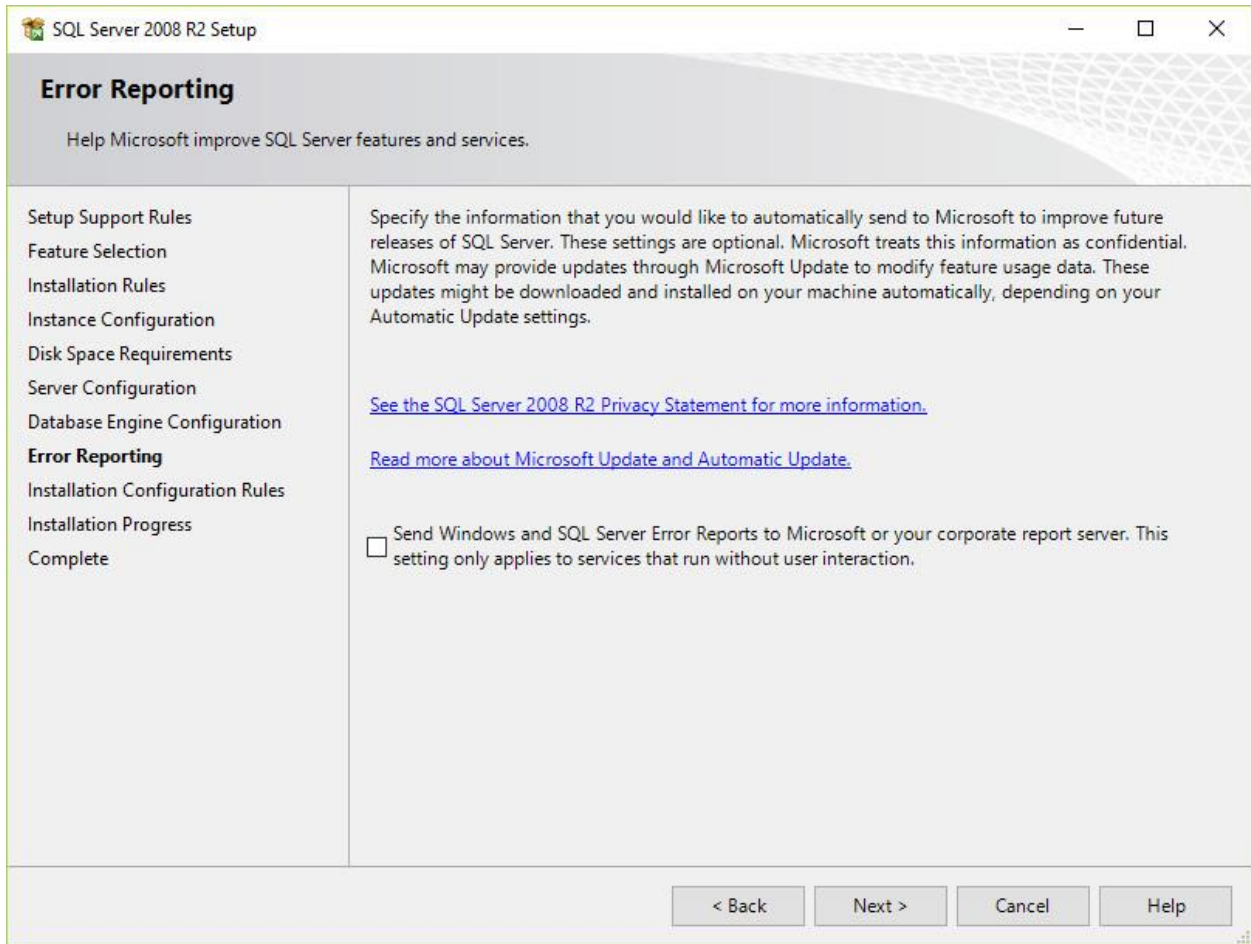
**Select Authentication mode.**  
If windows authentication mode is selected, use windows login id and password to access SQL Server.

**Select Authentication mode.**  
If Mixed Mode is selected, provide password and confirm password. Default username is sa to access SQL Server.

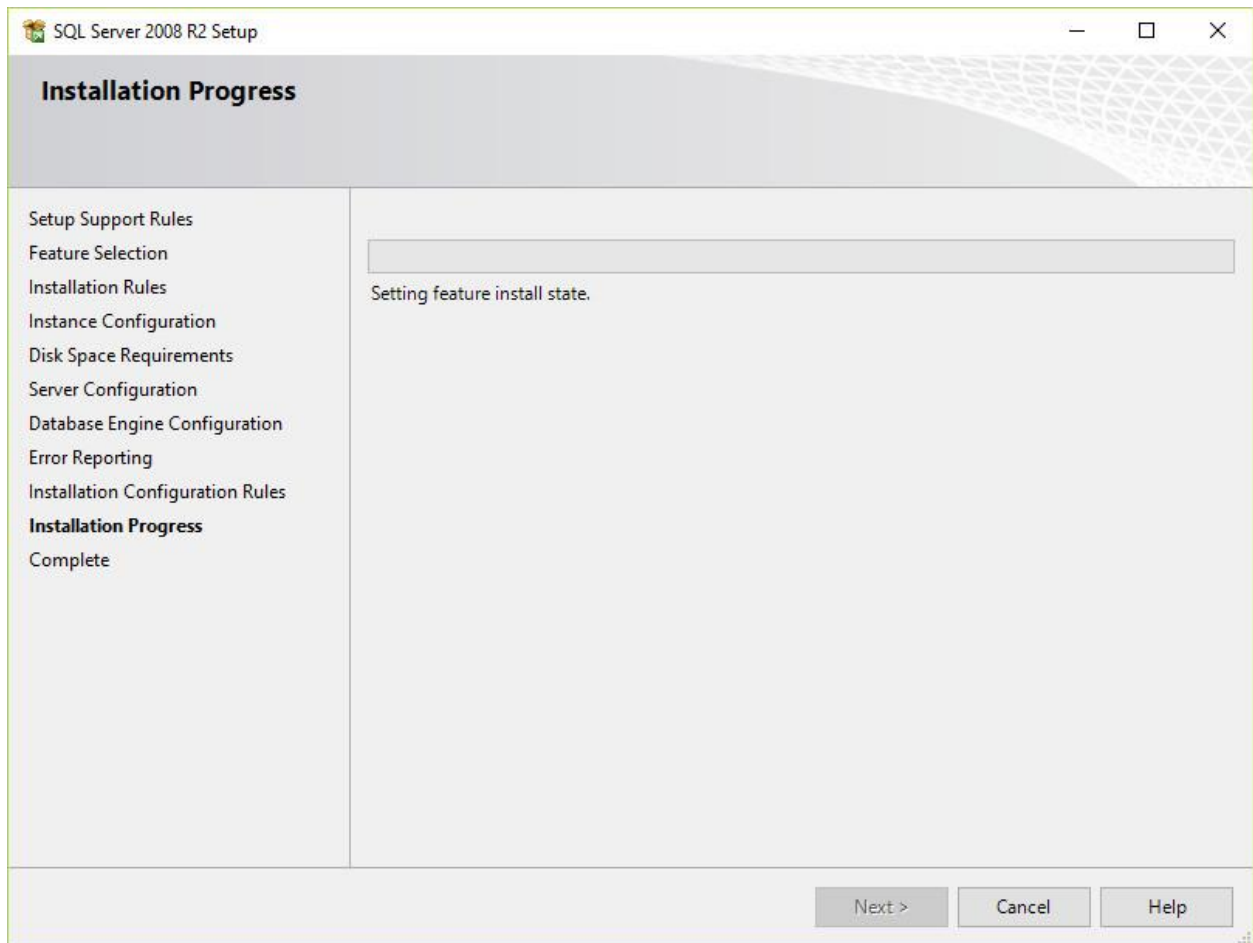
**Default SQL Server Administrator name will be appeared here**

**Additional user can be created using Add button**

**13) Error reporting to improve SQL server feature. If you wish to send error report to Microsoft, check the checkbox in the below screen**



## 14) Click "Next" button to proceed Installation



**15) Installation Success window. If you get the success message, installation is completed successfully. If you get error, try to reinstall again.**

