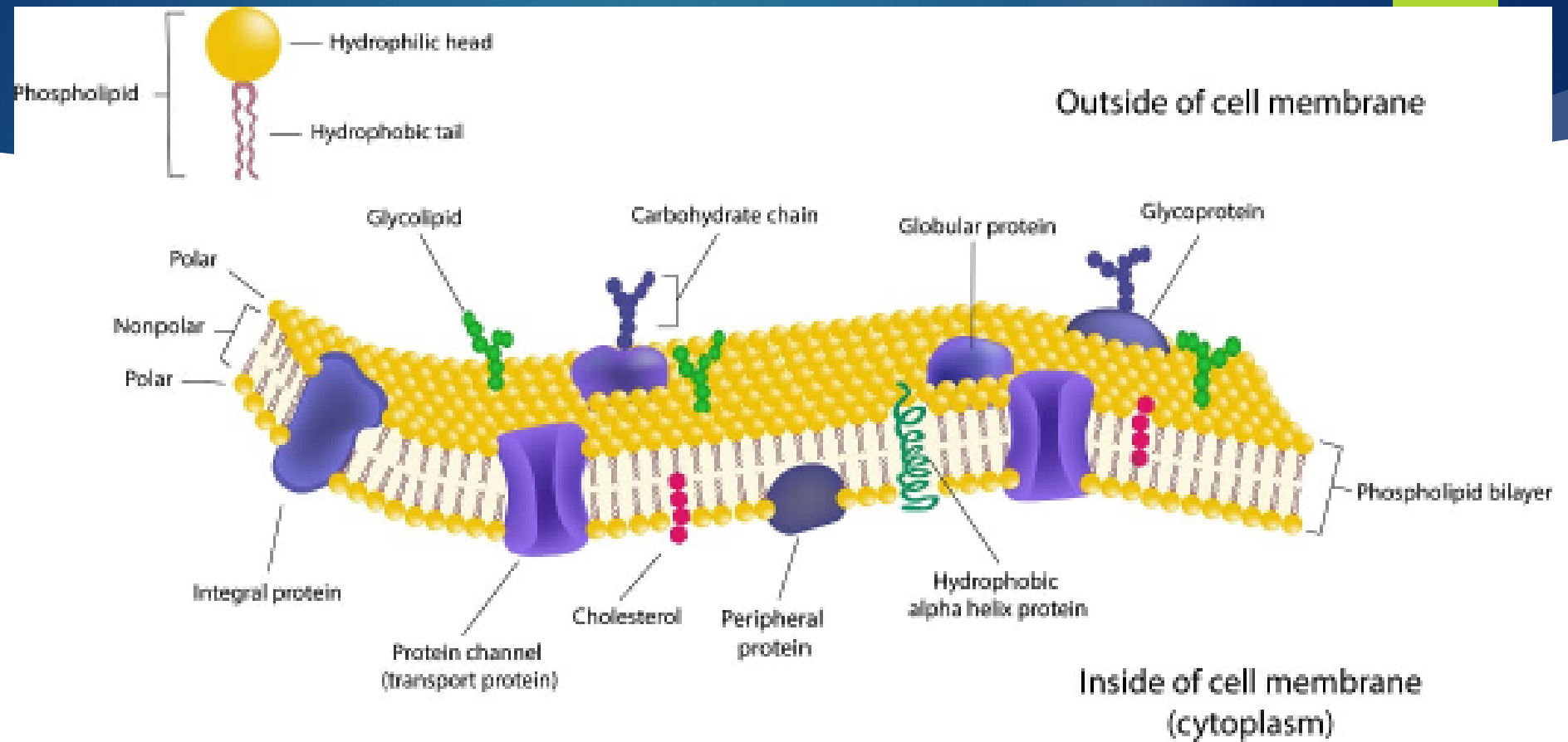


Plasma Membrane



Edit with WPS Office



What is plasma membrane?

- Outermost layer (animal)
- Thickness is 5-8 nm
- Selectively permeable
- Serve as outer boundary
- Allows some substances to cross more easily than others
- Made of Phospholipids, proteins & conjugated molecules
- Separate and protect cell from external environment
- Provide connecting system b/w cell & its environment
- Also called cell membrane

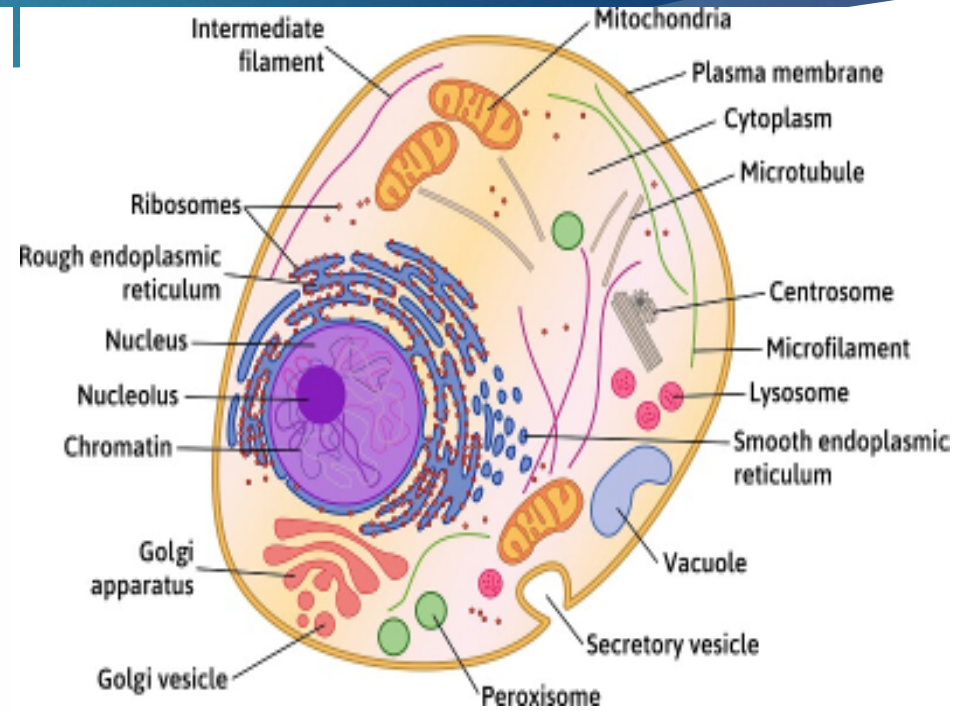
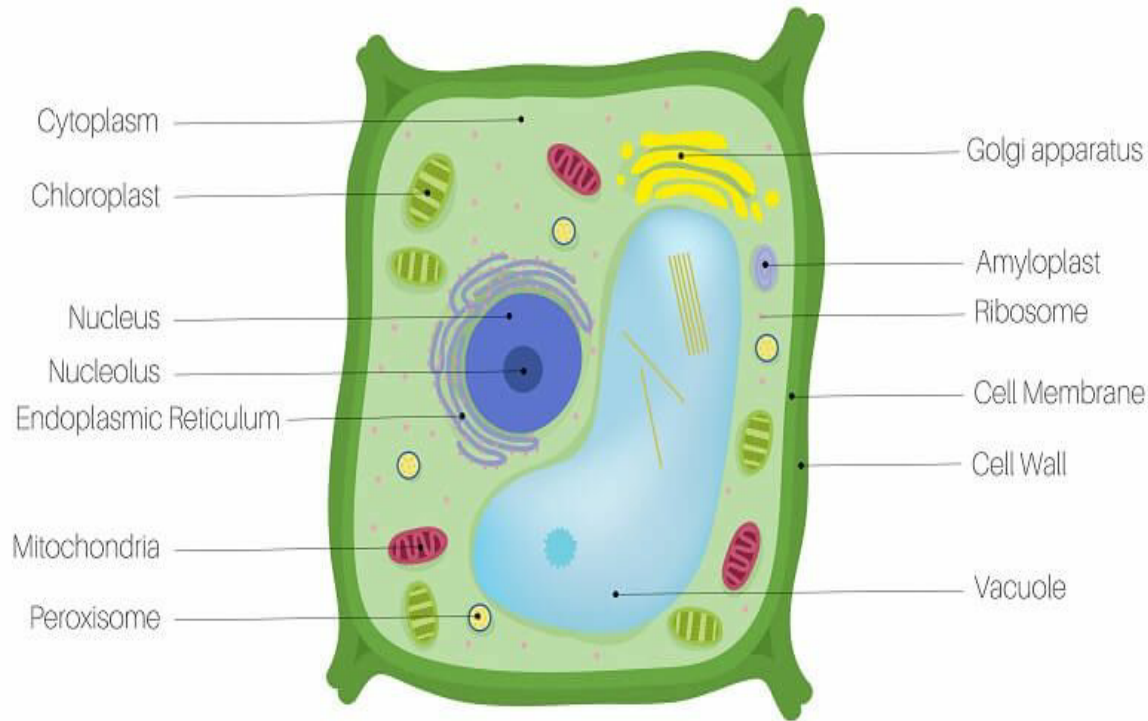


Cell Membrane (Contd.)

- ✘ Cell Membrane is made of lipids arranged in bilayer called phospholipid bilayer
- ✘ Defines size and shape of the cell
- ✘ Protects inner contents from external environment
- ✘ Present between cytoplasm and cell wall in plant cell
- ✘ Boundary of cytoplasm in animal cells



Plant Cell Vs Animal Cell



Edit with WPS Office

How could you define plasma membrane?

An outermost envelope surrounding the cell that separates and protects the cell from the external environment and provides a connecting system B/w the cell and its environment is called plasma membrane.



Active and Passive Transport

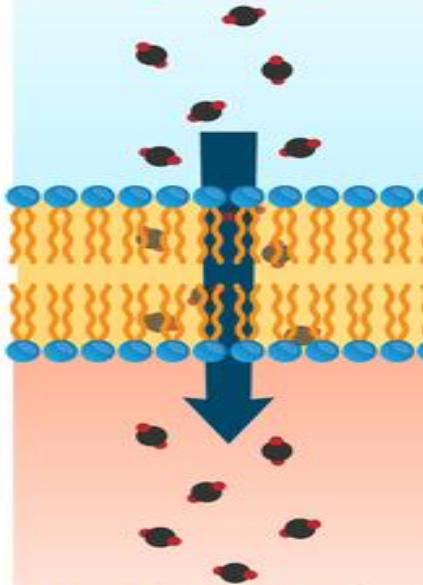
- ☒ **Passive** Transport = Moves particles from areas of **high** concentration to areas of **low** concentration. Does not require energy
- ☒ **Active** Transport = Moves particles from areas of **low** concentration to areas of **high** concentration. Requires energy



PASSIVE TRANSPORT

DIFFUSION

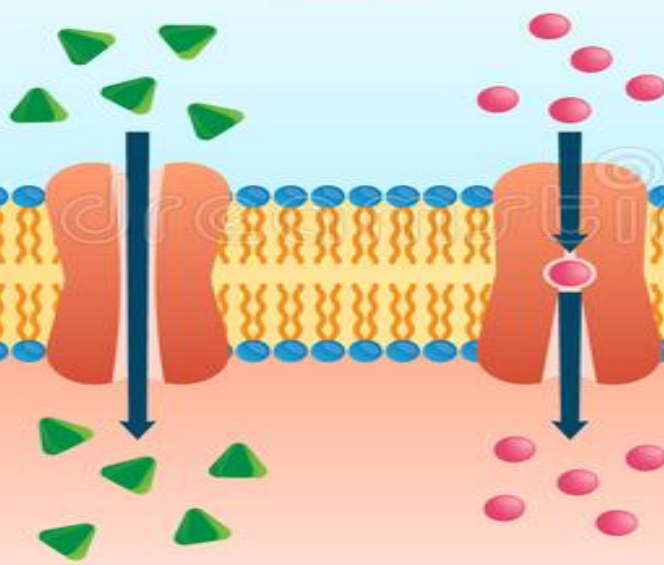
High Concentration
Gradient



Low Concentration
Gradient

FACILITATED DIFFUSION

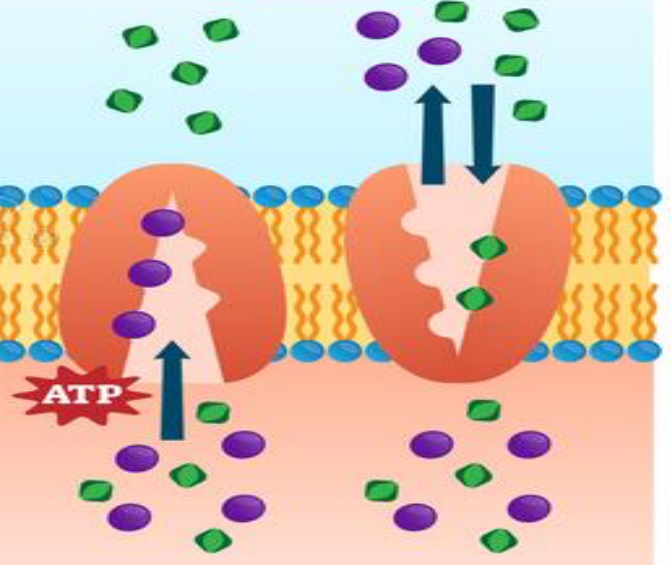
High Concentration
Gradient



Low Concentration
Gradient

ACTIVE TRANSPORT

Low/High Concentration
Gradient



High/Low Concentration
Gradient



Edit with WPS Office