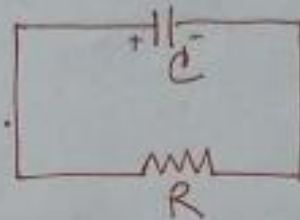
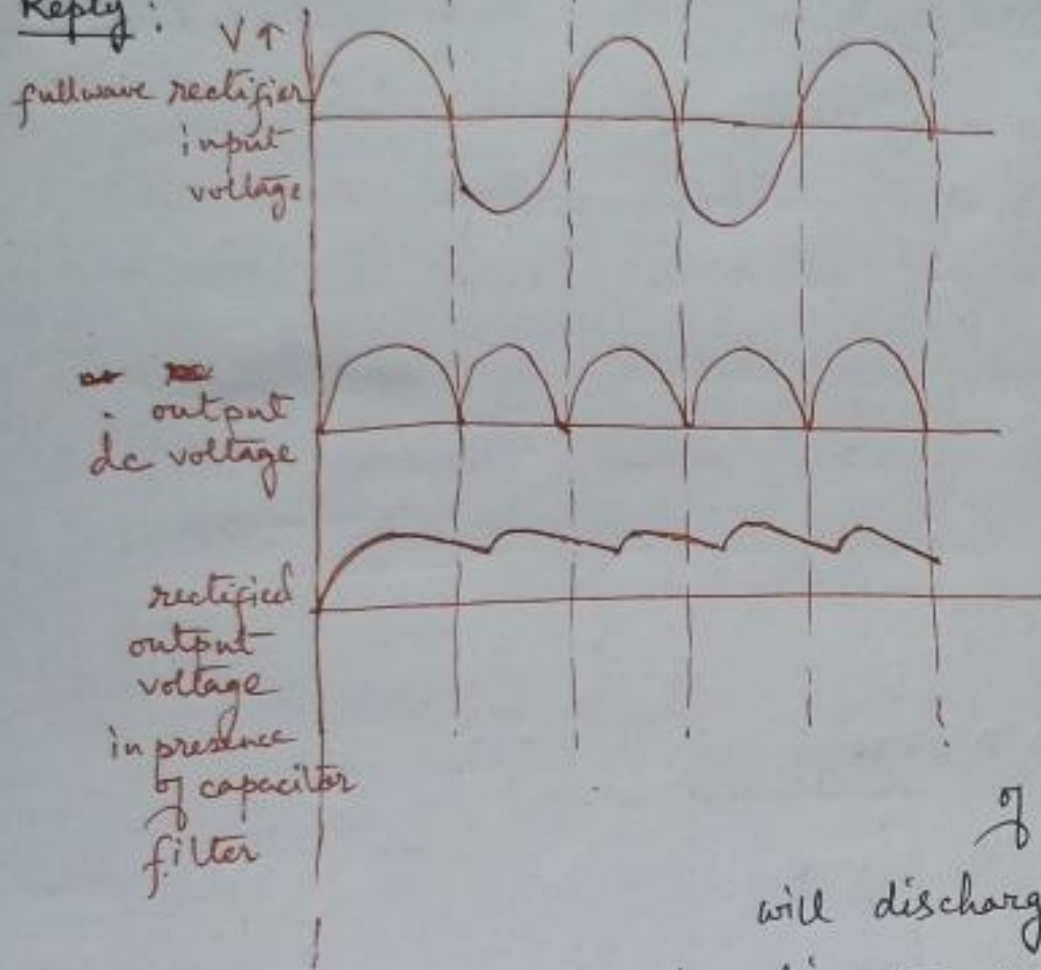


Reply:



Capacitor discharging circuit

In case of a capacitor charged upto q and then maintained at the maximum potential q/c , if the load R is connected ~~in series~~ across it, in absence of any external voltage source, the capacitor

will discharge through R .

According to Kirchhoff's voltage law,

$$\frac{q(t)}{c} + iR = 0$$

$$\text{So } \frac{q(t)}{c} + \frac{dq(t)}{dt} R = 0$$

$$[i = \frac{dq}{dt}]$$