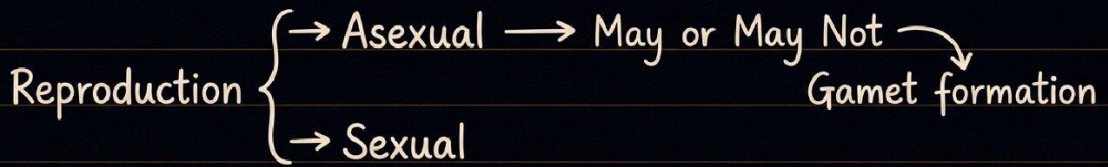
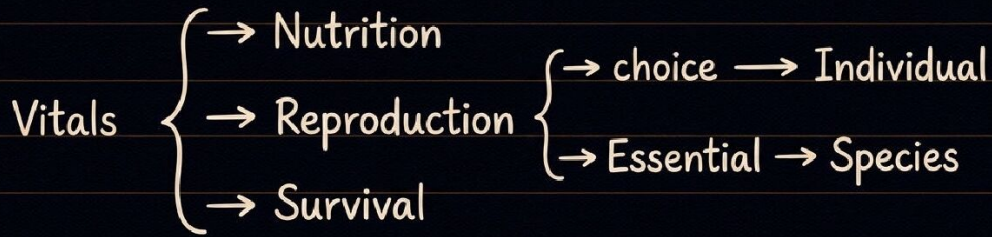


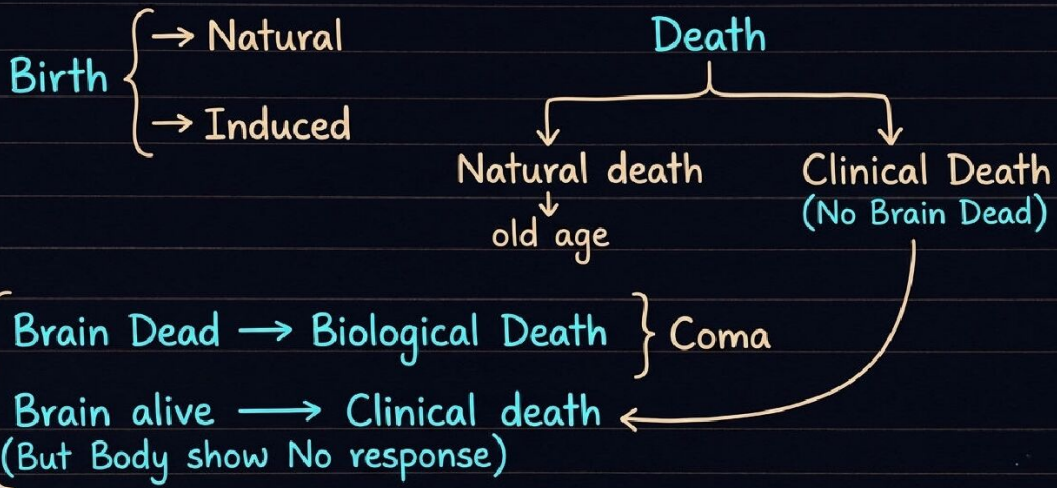
Sexual Reproduction

Reproduction :-

life Span → the Period from birth to death.



NotebookLM

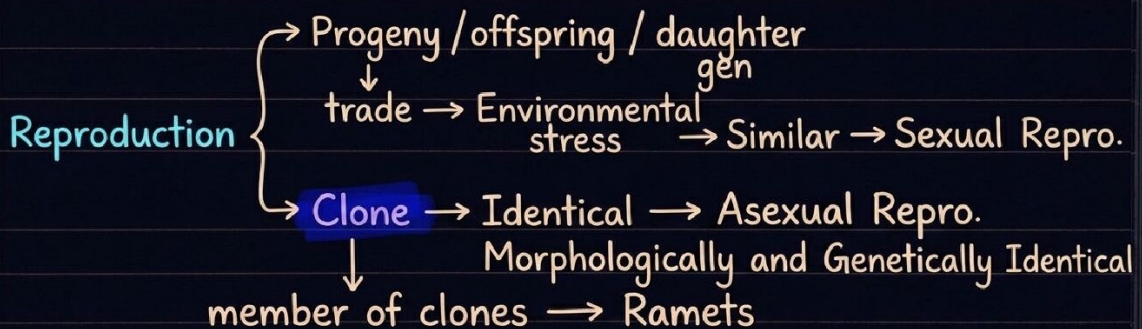


- Immortal → Unicellular → No Natural death
- Syngamy → fusion of Male and female gamet
- fertilization → when fusion result into zygote.

NotebookLM

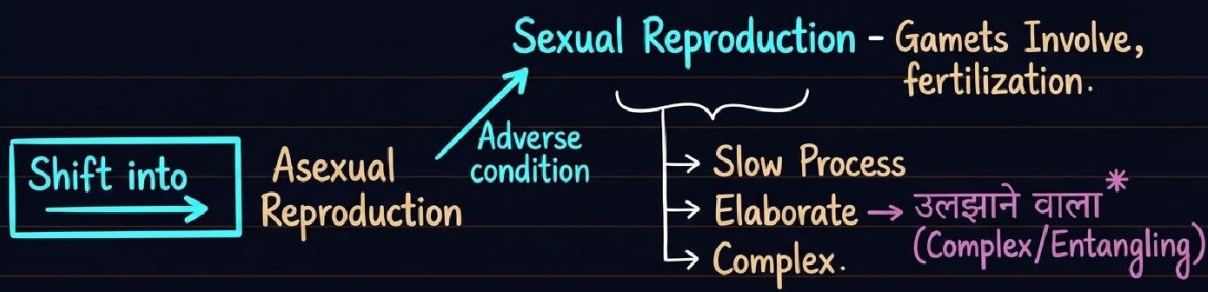
Reproduction depends upon {

- Habitat
- Internal Physiology
- other factor → stress



Asexual Reproduction → Uniparental Agametic Somatogenic } Same Pattern

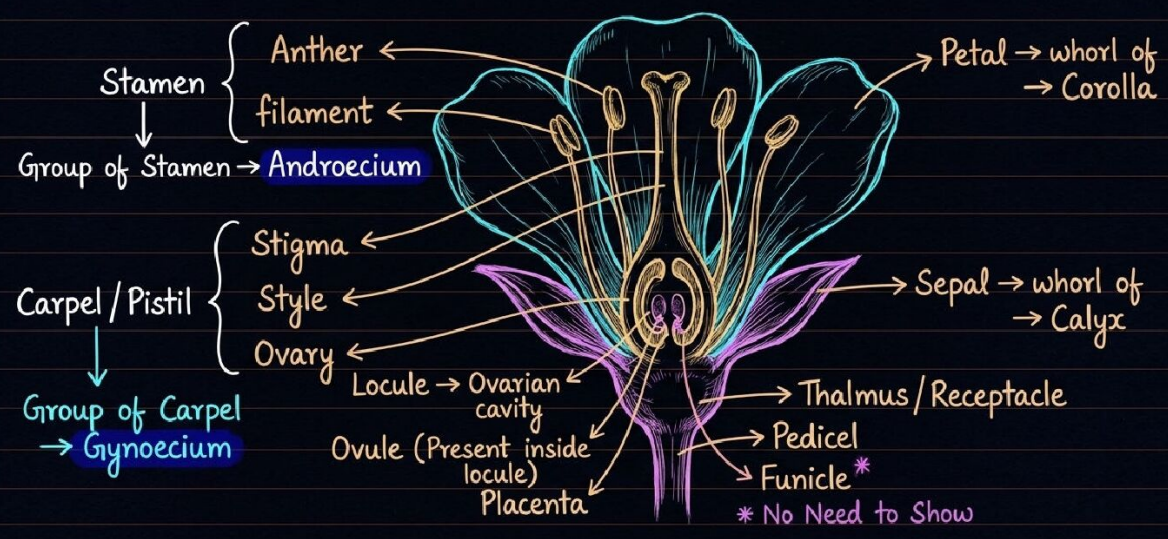
NotebookLM



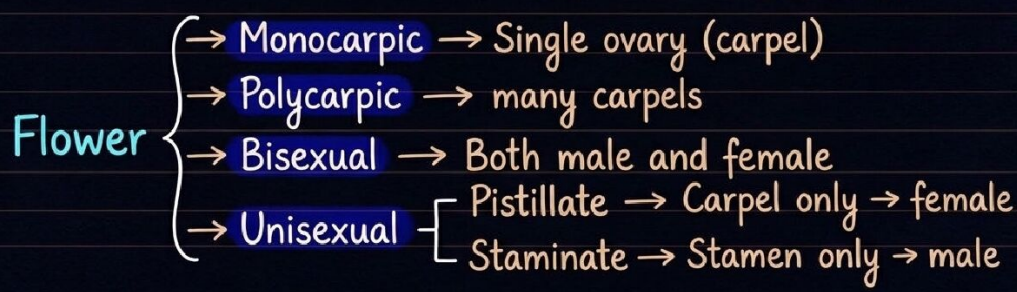
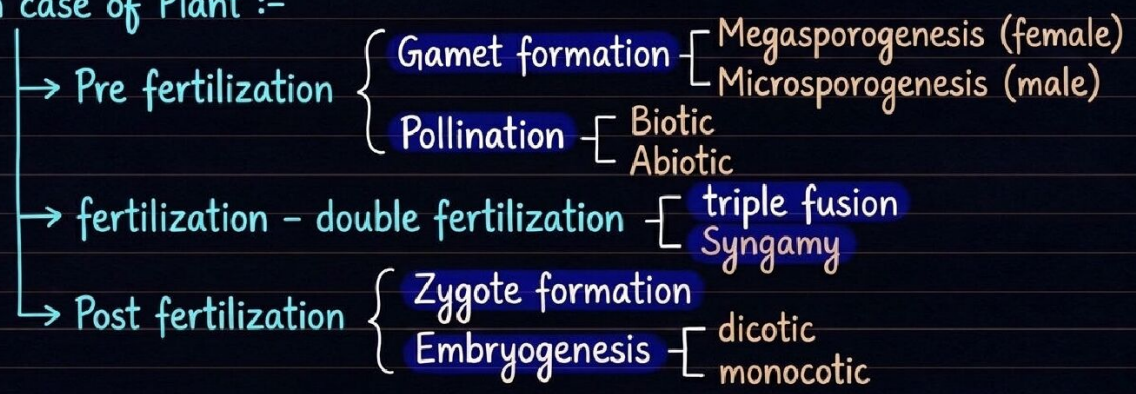
Pattern of Sexual Reproduction



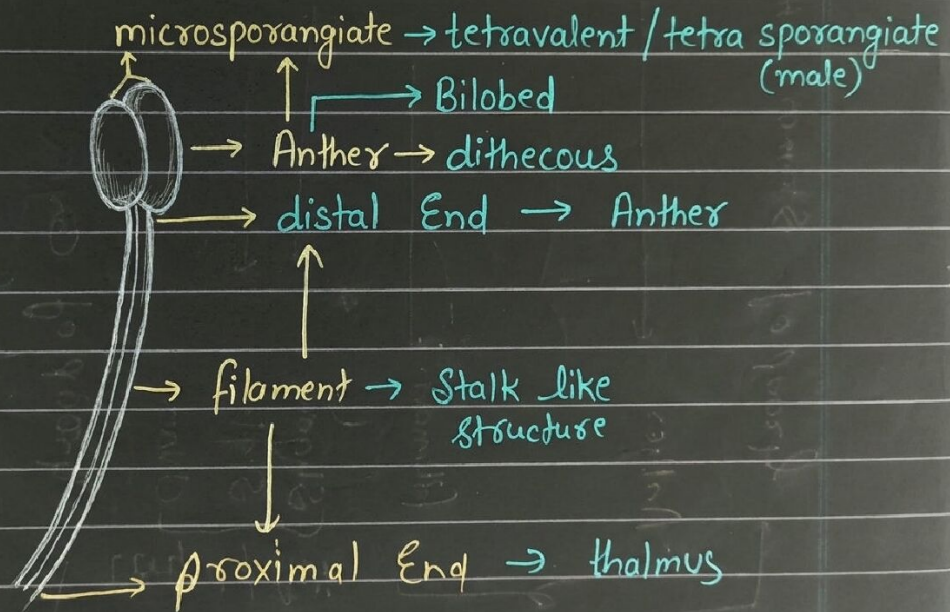
Flower → Site of Sexual Reproduction
 Evolutionary Modified shoot → Internode do not Elongate → axis got condensed.



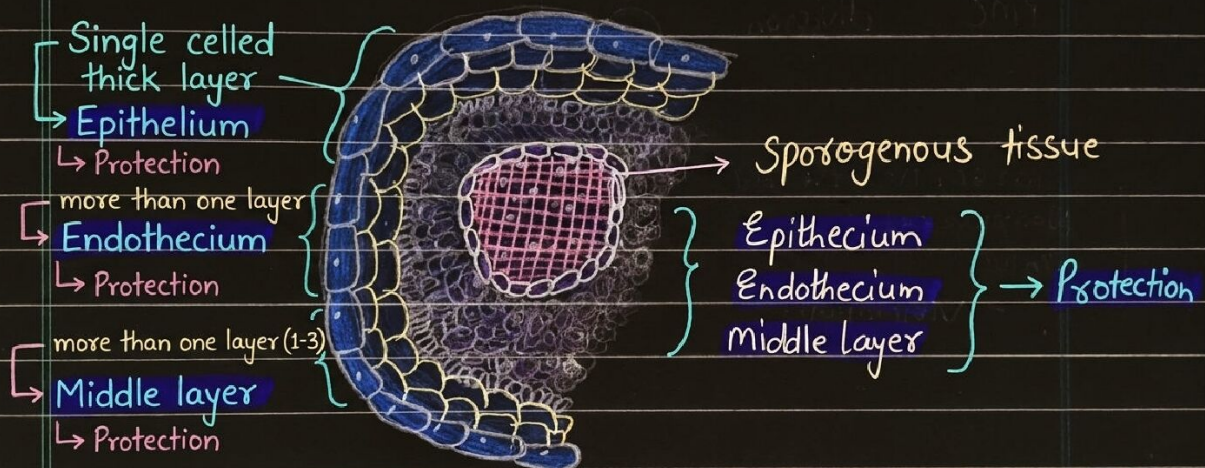
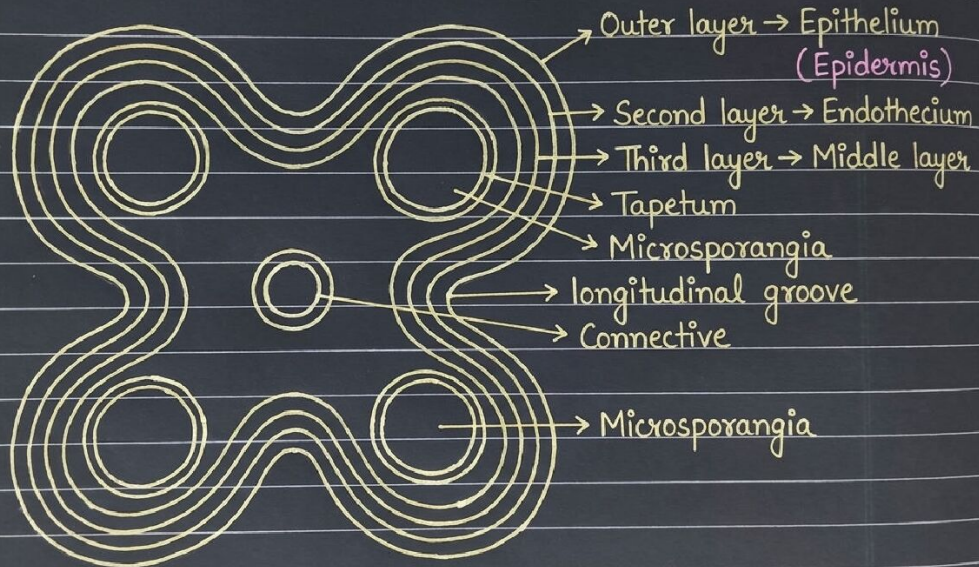
In case of Plant :-



★ Stamen



Microsporangium → Home of microspore.



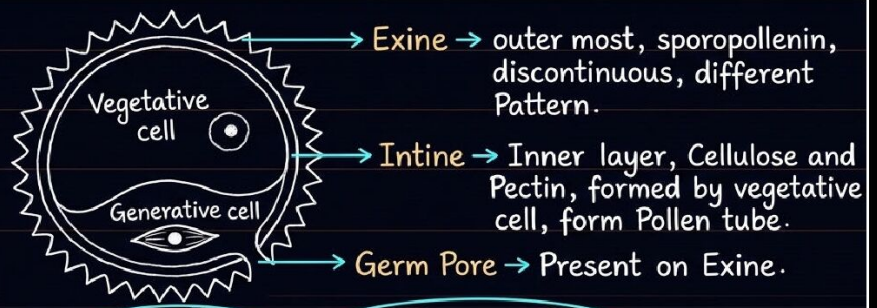
Special Features

Dehiscence → फटना (Bursting)

↳ Due to loss of water → Endothecium

Tapetum

- { Multinucleated
- { Single layered
- { free nuclear division



Structure of **Pollen Grain** → **Male Gametophyte**



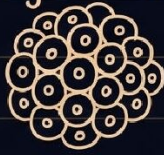
Sporopollenin → Hardest substance.

- **Nourishment**
 - **Secrete Enzyme** → **Callase**
 - **Release Hormone** → **Auxin**
 - **Secrete** → **Sporopollenin** → **form Exine**
 - **Secrete Pollen kit** → oily, viscous, sticky
- } **functions of Tapetum**

Microsporogenesis

Sporogenous tissue

{ Have ability to produce Pollen }



Each cell



(2n)

- PMC** Pollen Mother Cell
- MMC** Microspore Mother Cell
- PP** Potential Pollen
- (2n) **diploid**

