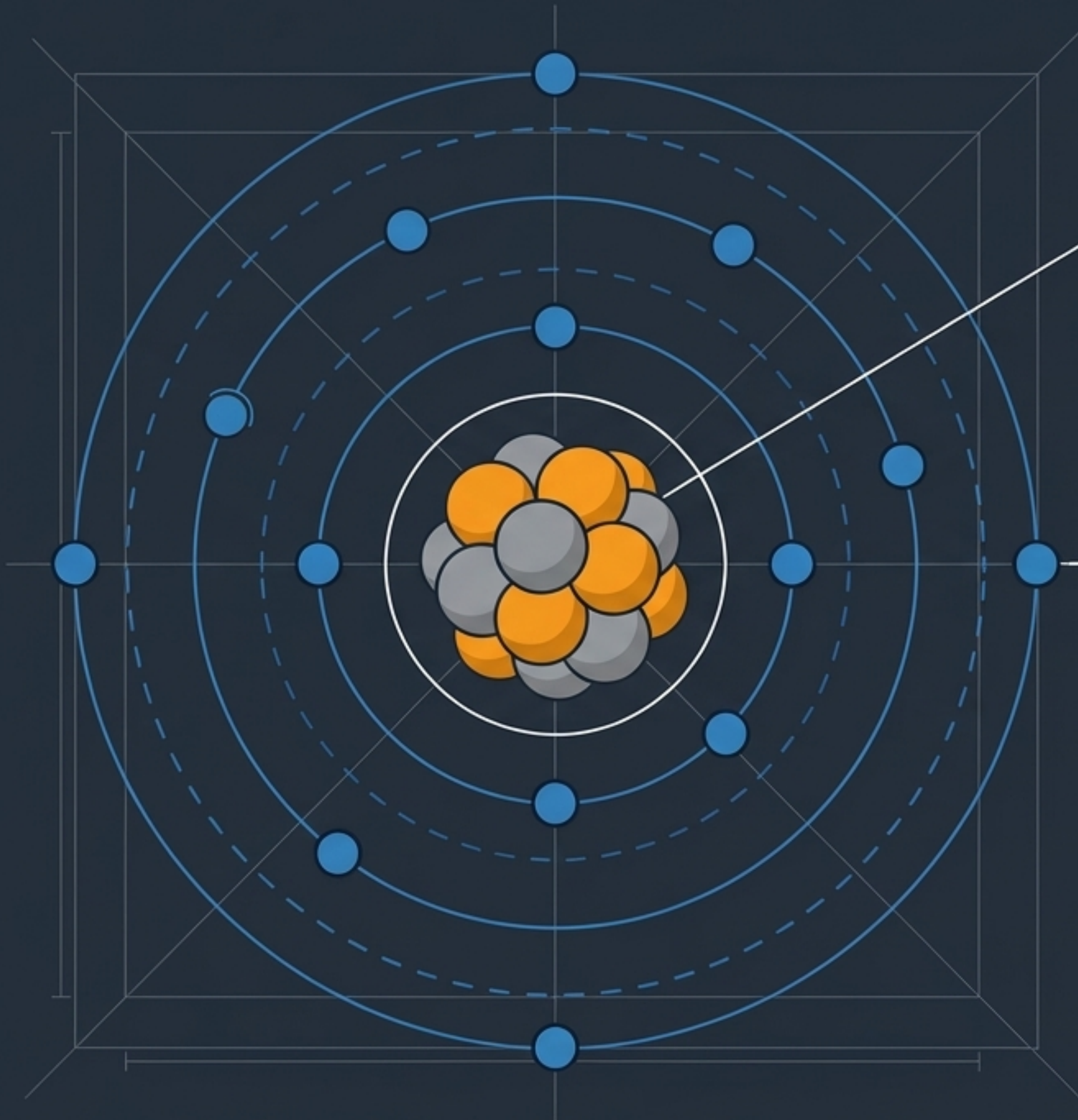


The Mechanics of Flow

Visualizing the invisible bridge between electrical current and chemical transformation.





The Core

A central dense region called the nucleus. Contains positively charged protons and neutral neutrons.

The Orbit

Negatively charged electrons surround the nucleus at varying distances.

The Balance

In a neutral atom, the number of electrons perfectly equals the number of protons, canceling each other out.

Inner Orbits



Electrons closer to the nucleus are tightly bound and incredibly difficult to remove.

Outermost Orbits



Electrons present in the outermost orbit require relatively less energy to be ejected.

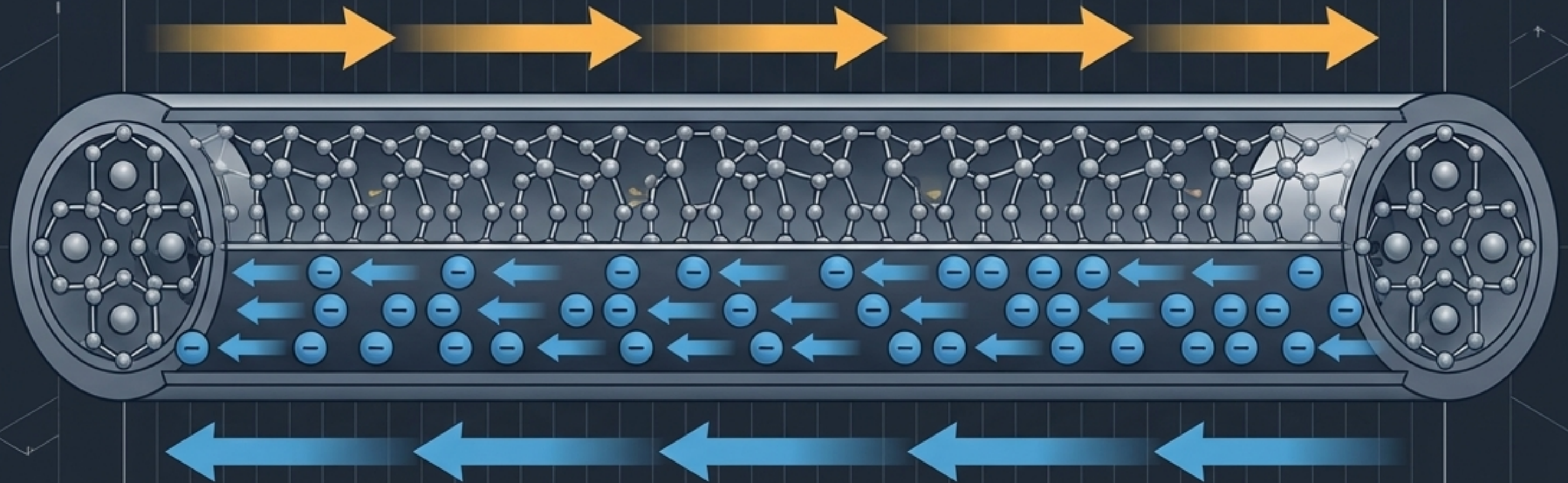
The Catalyst for Flow

All metallic elements have “free electrons” in their outermost orbit. Electric current is born when these free electrons are forced to move from one atom to another.

Conventional Current

Flows from the Positive Terminal to Negative Terminal.

Note: This is the established engineering model used in closed-circuit analysis.



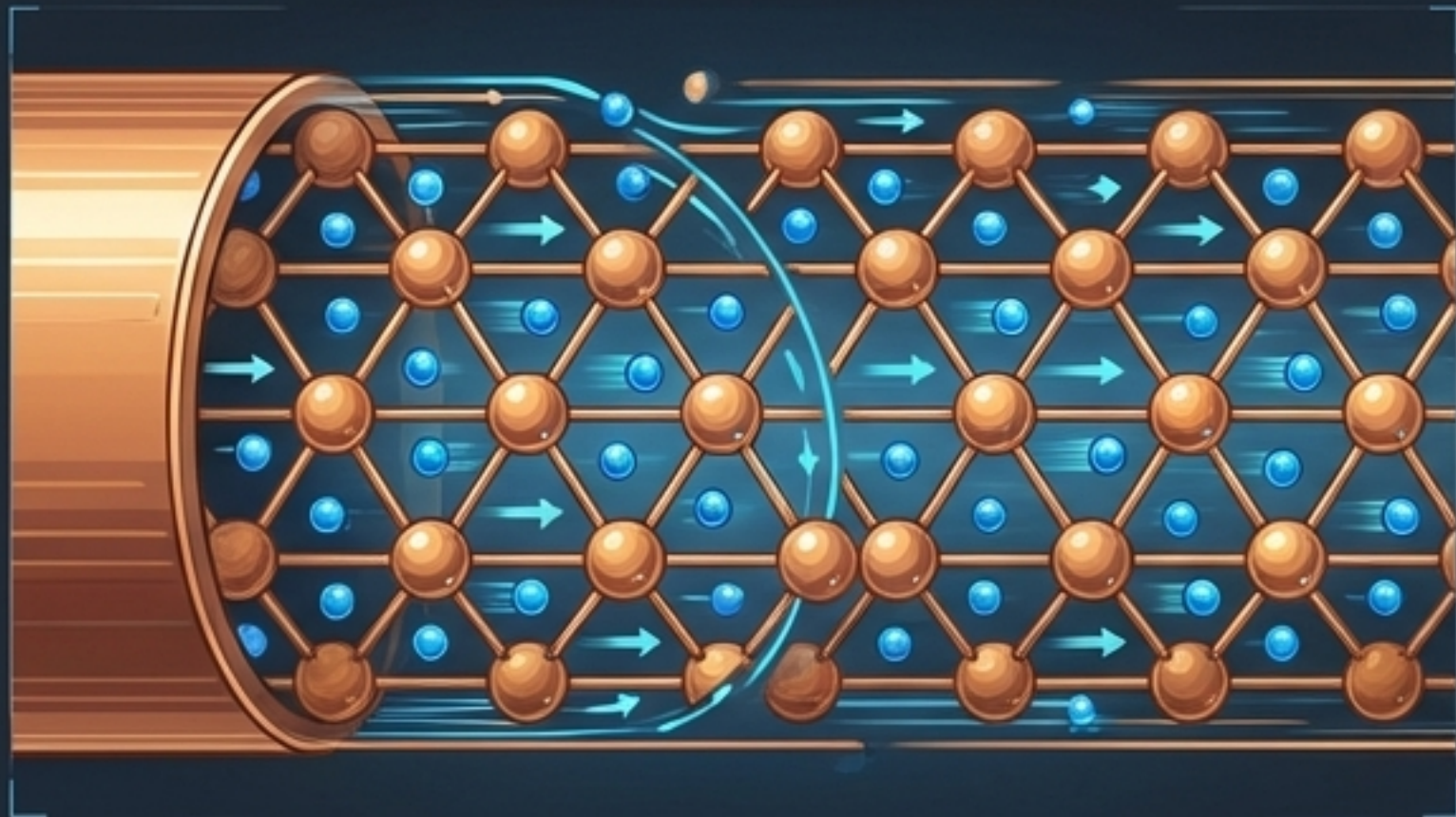
Actual Electron Flow

Flows from the Negative Terminal to Positive Terminal

Note: This is the physical reality of the negatively charged particles moving through the material.

MATERIAL CONDUCTIVITY: THE FLOW & THE BLOCK

CONDUCTORS (THE OPEN GATES)



INSULATORS (THE CLOSED GATES)



Definition:

Materials that readily allow electricity to flow due to loosely bound electrons.

Examples:

Iron, Copper, Silver, Aluminium, Graphite.

SYNTHESIS: THE EVERYDAY WIRE

Everyday electrical wires seamlessly combine both: a highly conductive copper core wrapped in an insulating plastic sheath to direct the flow safely.

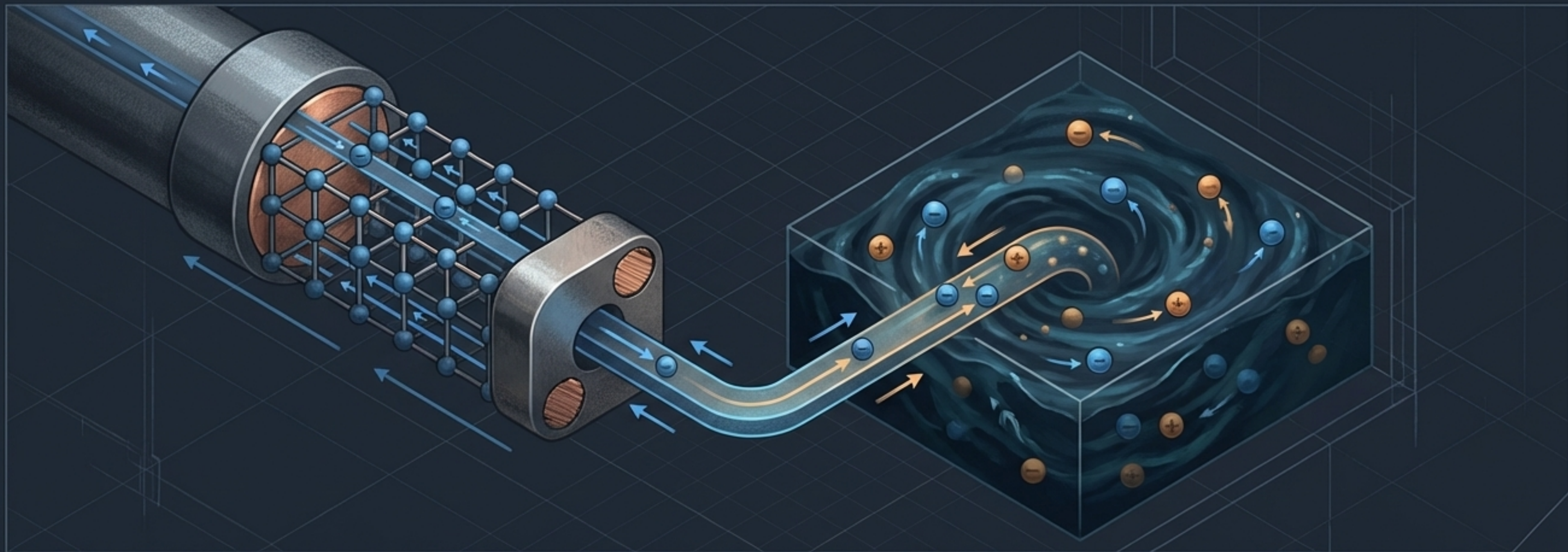


Definition:

Materials that block the flow of electric current due to tightly bound electrons.

Examples:

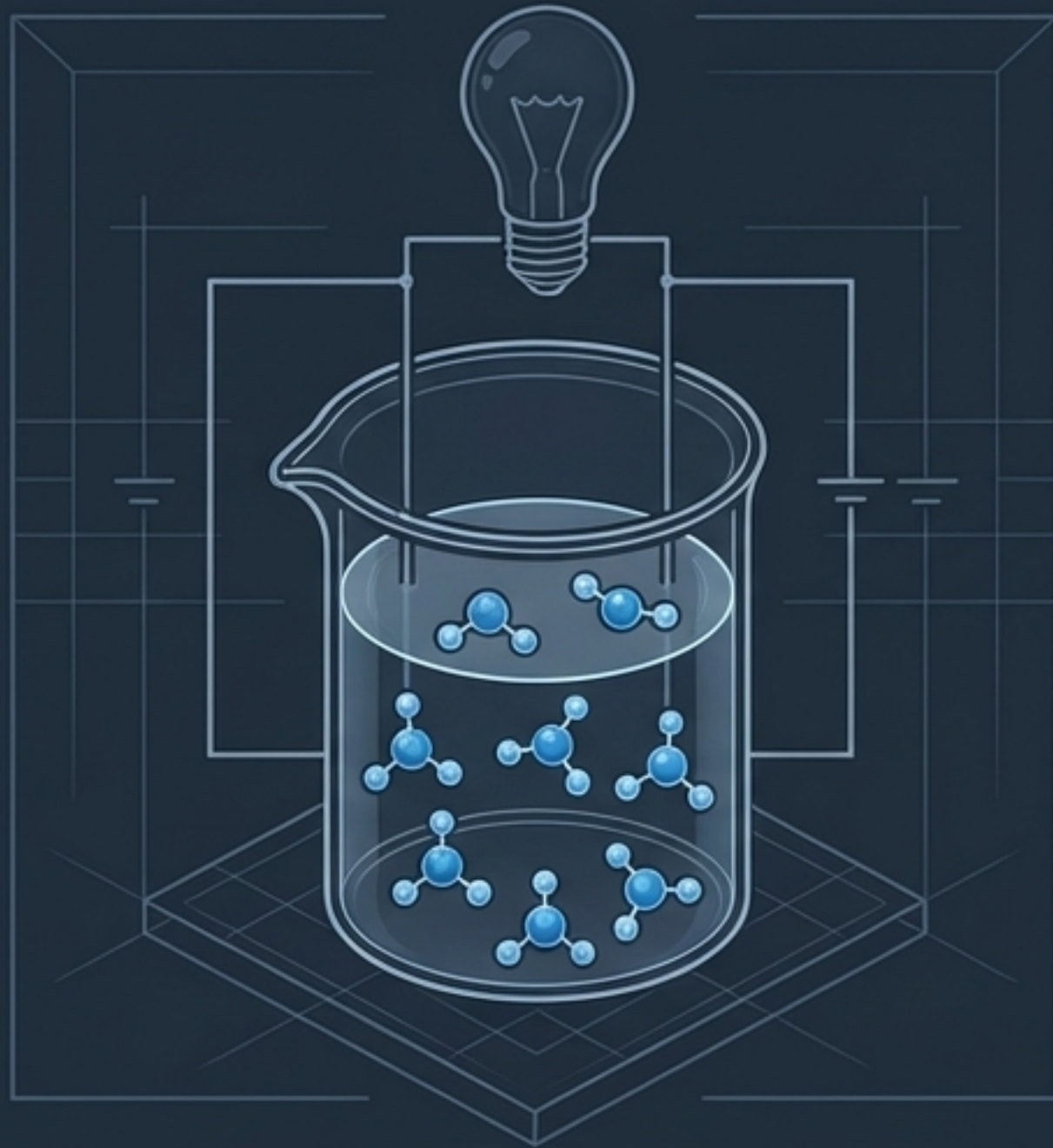
Rubber, Dry Wood, Asbestos, Plastic, Wool, Cotton.



Crossing the Threshold: The Liquid Pathway

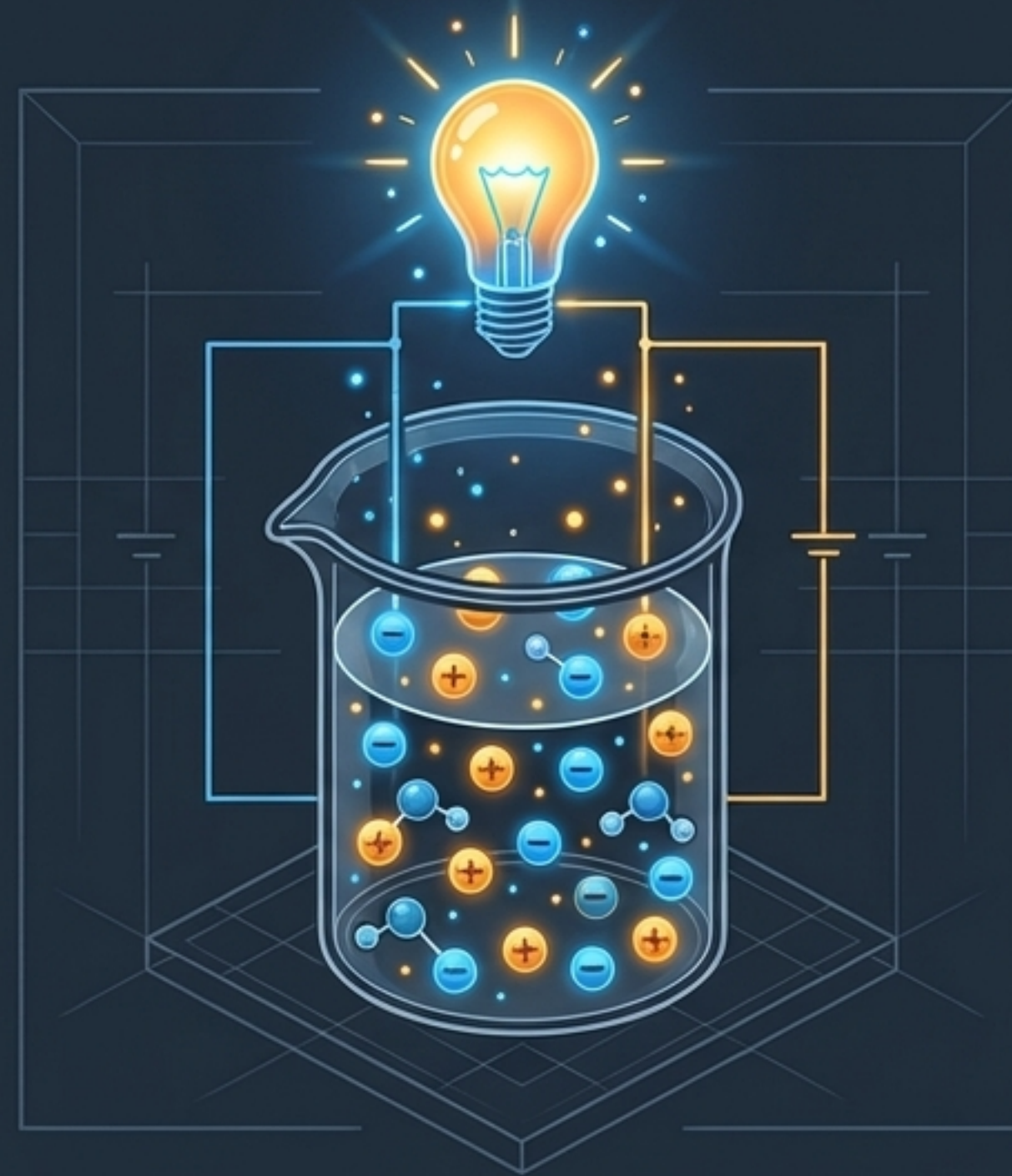
When electric current leaves a solid conductor and enters a liquid, the rules of flow change entirely. The liquid does not rely on free electrons. Instead, it relies on positively and negatively charged ions moving through the fluid.

ELECTRICAL CONDUCTIVITY: PURE vs. TAP WATER



Pure (Distilled) Water

Diagnosis: Poor Conductor (Non-Electrolyte).
Pure water lacks the freely charged ions necessary to carry a current.



Tap Water

Diagnosis: Good Conductor.
Natural impurities and salts provide the necessary freely charged ions to complete the electrical circuit.

THE CONDUCTIVITY SPECTRUM

Electrolytes (Current Flows)

Liquids that are good conductors of electric current.

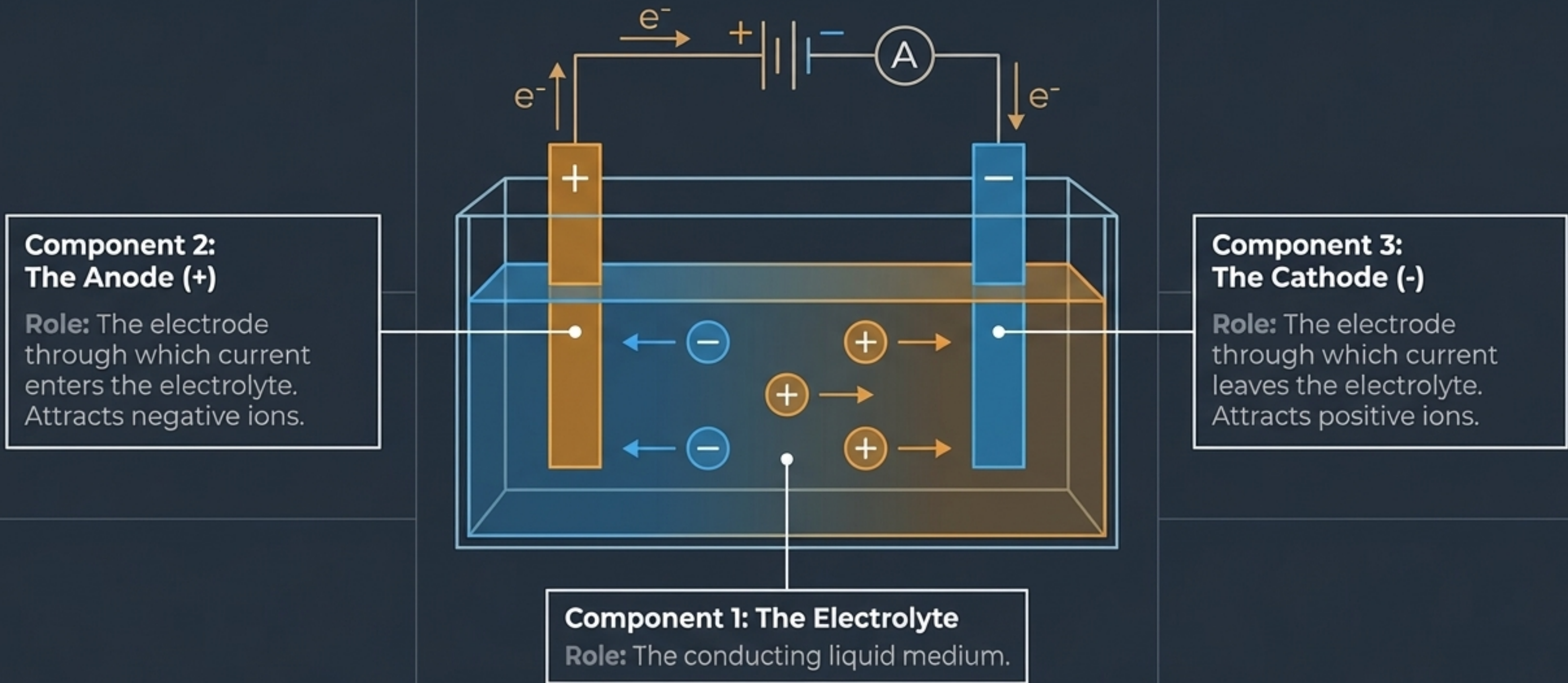
- ✓ Tap water
- ✓ Salt solution
- ✓ Milk
- ✓ Lemon juice
- ✓ Sulphuric acid

Non-Electrolytes (Current Blocked)

Liquids incapable of conducting electricity.

- ✗ Distilled water
- ✗ Sugar solution
- ✗ Oil
- ✗ Honey
- ✗ Vinegar

THE ELECTROLYTIC CELL



Step 1: The Trigger



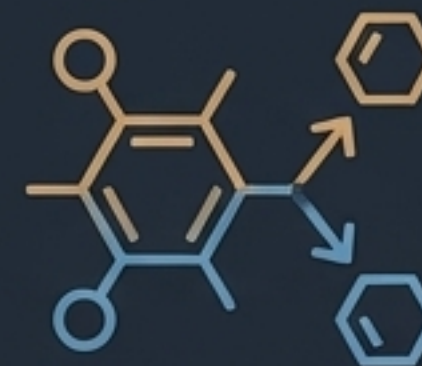
Electric current is forced through a conducting liquid (the electrolyte).

Step 2: The Reaction



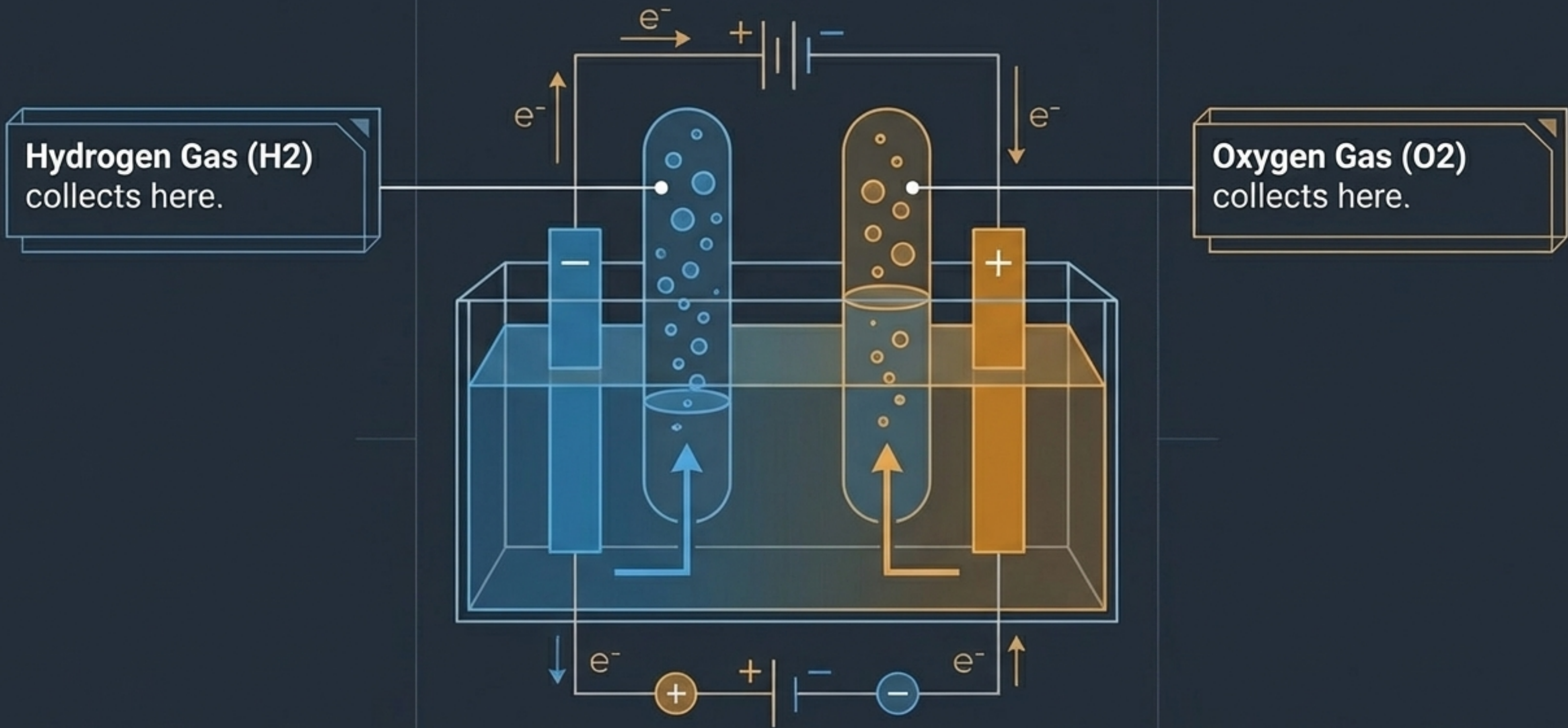
The current initiates intense chemical reactions within the bath.

Step 3: The Split



The chemical compound present in the electrolyte is literally torn apart into its constituent substances.

This phenomenon is known as the Chemical Effect of Current, and the destructive process of splitting the electrolyte is called Electrolysis.



Because water is H_2O , the electrolysis process consistently produces exactly twice as much hydrogen as oxygen.



Constructive Chemistry: Electroplating

An application of electrolysis where a layer of a desired material is systematically deposited onto another material using electric current.



1. Protection

Shielding vulnerable base metals from environmental corrosion.



2. Aesthetics

Enhancing the visual appearance of objects (e.g., silver-plating jewelry).

Target: The Anode (+)

Rule: Must be the material you want to use as the coating.

Role: Supplies metal cations into the bath.



Target: The Cathode (-)

Rule: Must be the target object that needs to be coated.

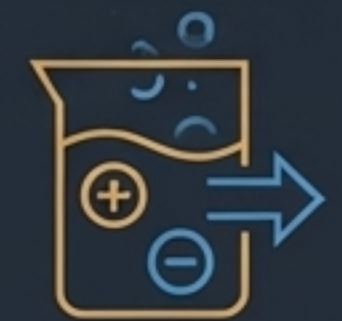
Role: Provides electrons to neutralize incoming metal ions, depositing them onto the surface.



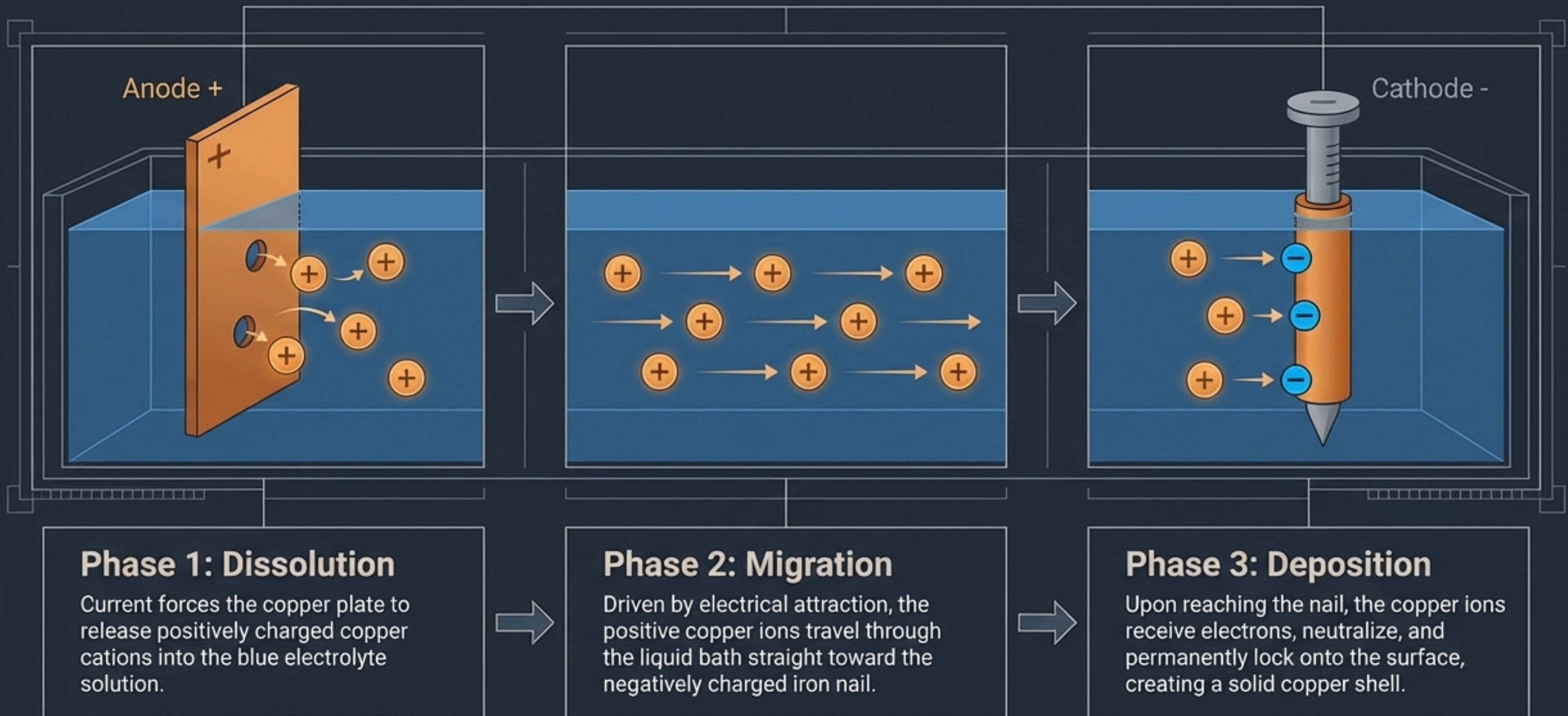
Target: The Electrolyte

Rule: Must be a salt solution made of the same metal used at the Anode.

Role: The fluid pathway containing identical ions.



The Electroplating Process: A Step-by-Step Sequence



Phase A: The Solid Flow

Cyan electrons speeding through the tight lattice of a copper conductor.

Phase B: The Liquid Medium

The current crossing the threshold, activating a storm of freely moving ions in the electrolyte.

Electric current is more than just energy transfer. It is a tool capable of dismantling and rebuilding the physical world, molecule by molecule.

Phase C: The Physical Reality

The resulting chemical effect—ions locking into place to form a physical, macroscopic layer of metal.

Phase C: The Physical Reality

The resulting chemical effect—ions locking into place to form a physical, macroscopic layer of metal.