

Jewelry Anatomy

Anatomy of a Jewellery is the study of structures and elements of a jewellery and how they are arranged in a jewellery article.

Shweta Kaul

Sr. Design Faculty & Educator

Anatomy of a Pendant

Types of Bails

Bails

The part of the pendant that goes over the chain is called the bail or bale. This holds the piece/ pendant to the chain. It allows a chain to flow through and is attached to the pendant usually by a ring/ jump ring.



Peg Bails

Peg bails are glued into holes in the tops of inexpensive, tumbled stones.

12x6.5mm



Bell Caps

Bell caps are glued onto the ends of crystals. These are ideal for stones you don't want to drill, such as amber.



Glue-on Bails

Glue-on bails are designed to be glued to the backs of cabochons. Although not as secure as a bezel setting, glue on bails are less expensive.



Tube Bails

The Tube bail consists of a tube that connects to the top of the pendant allowing the chain to feed through it. The tube can be decorative or a simple metal tube.



Clip-on/Necklace Bail

This bail is attached without being soldered to the pendant itself but to a jumpring. Hence allowing movement between the pendant and the bail.



Fixed Bail

The bail is fixed or soldered onto the pendant and can be decorative.



Hidden Bail

The hidden bail is built into the pendant. It gets its name because traditionally it is hidden from view in the design of the pendant, allowing the chain to feed through the pendant itself.

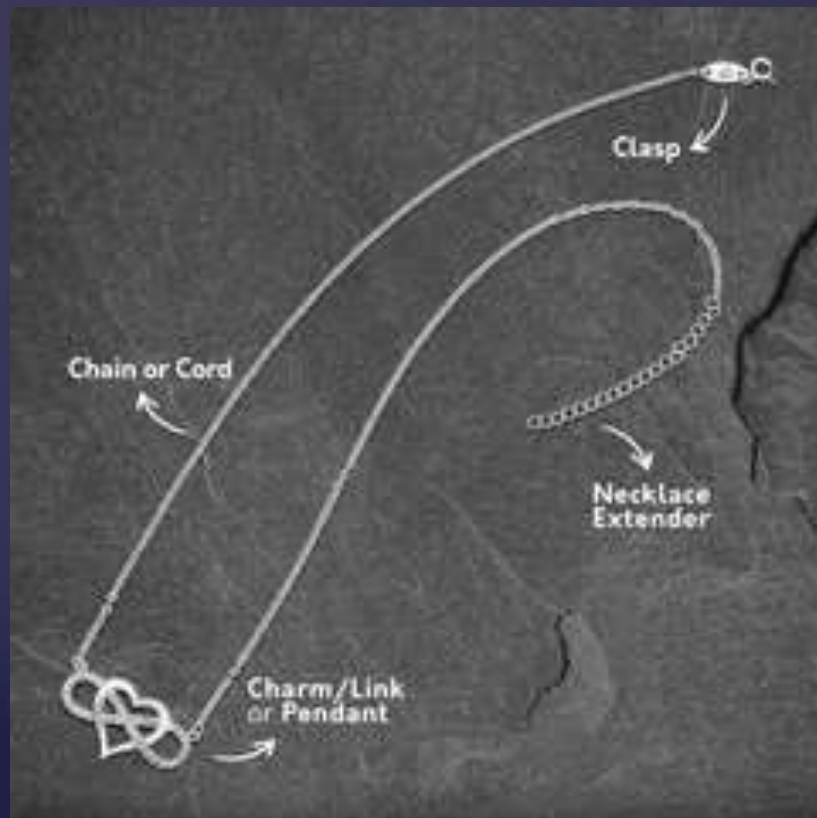


Slide

The slide pendant is a style where the bail is not a separate element but incorporated in the design itself for the chain to pass through.



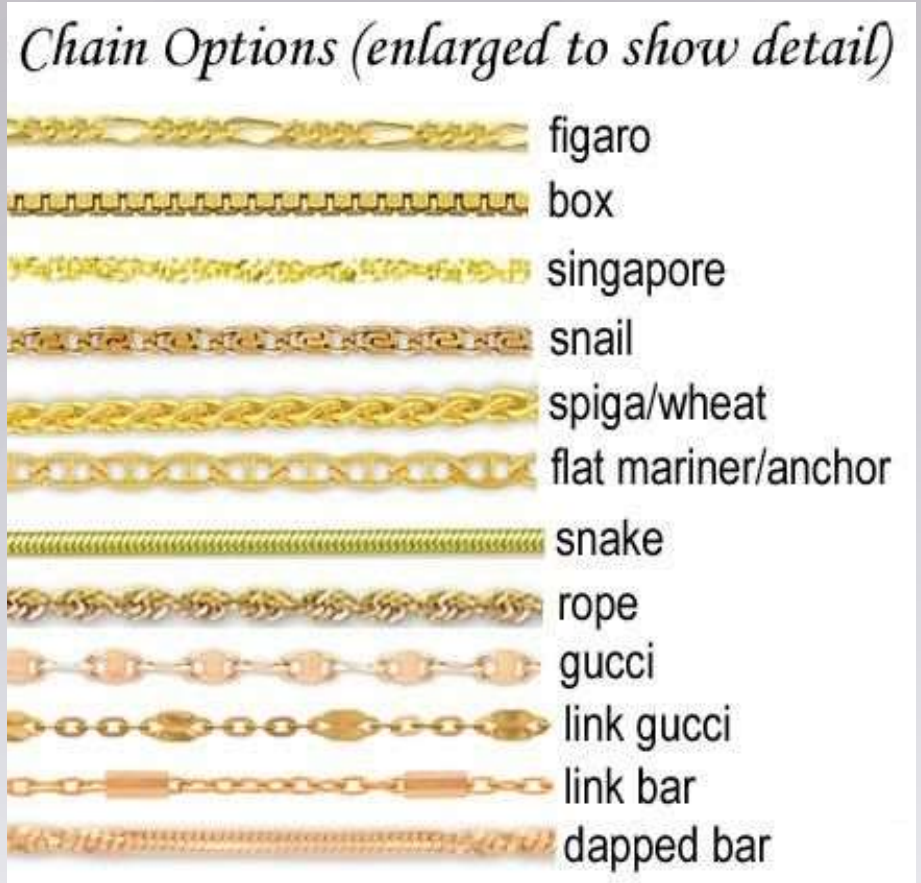
Anatomy of a Chain



Types of chains

Chain Styles

Every chain offers its unique designs. Some are feminine and light weight while others are rugged masculine chains



Bead 

Box 

Byzantine 

Cable 

Solid Cable 

Curb 

Figaro 

Herringbone 

Mesh 

Omega 

Palma 

Popcorn 

Rolo 

Rope 

San Marco 

Singapore 

Snake 

Wheat 

round snake chain



flat snake chain
(AKA herringbone chain)



curb chain



double curb chain



wheat chain



bar chain



book chain



fish spine chain



ball chain



Clasps or Fasteners

Almost all necklaces, bracelets have some form of clasp or fastener to make them more convenient to wear.

The most popular and the strongest types of necklace clasps include:

- **Lobster clasps** are spring-operated fasteners that can be opened and closed with a small lever, allowing for easy attachment and removal of jewelry. The clasp has a small lever that, when pressed, opens the clasp, and it automatically closes when release
- **The box clasp** is a beautiful closure that is highly secure. It consists of two main parts: a “tongue,” which is the smaller of the two, and a “box,” which is larger. The tongue section locks into the box clasp.



- **Spring Ring Clasp** – a ring that can be opened and closed with a small lever, which operates with a spring mechanism. Once closed, the spring ring doesn't easily open, unless you push down hard on it.
- **Hook and Eye Clasp** – a hook that can be opened to hold onto the ring of the other end. This is a sturdy type of clasp and one of the oldest used in jewelry.
- **Toggle Clasp** – An easy clasp, the toggle works by pushing a long, thin bar vertically through a ring and then allowing it to fix horizontally against the ring. Once in place, the toggle clasp doesn't come apart and is secure.

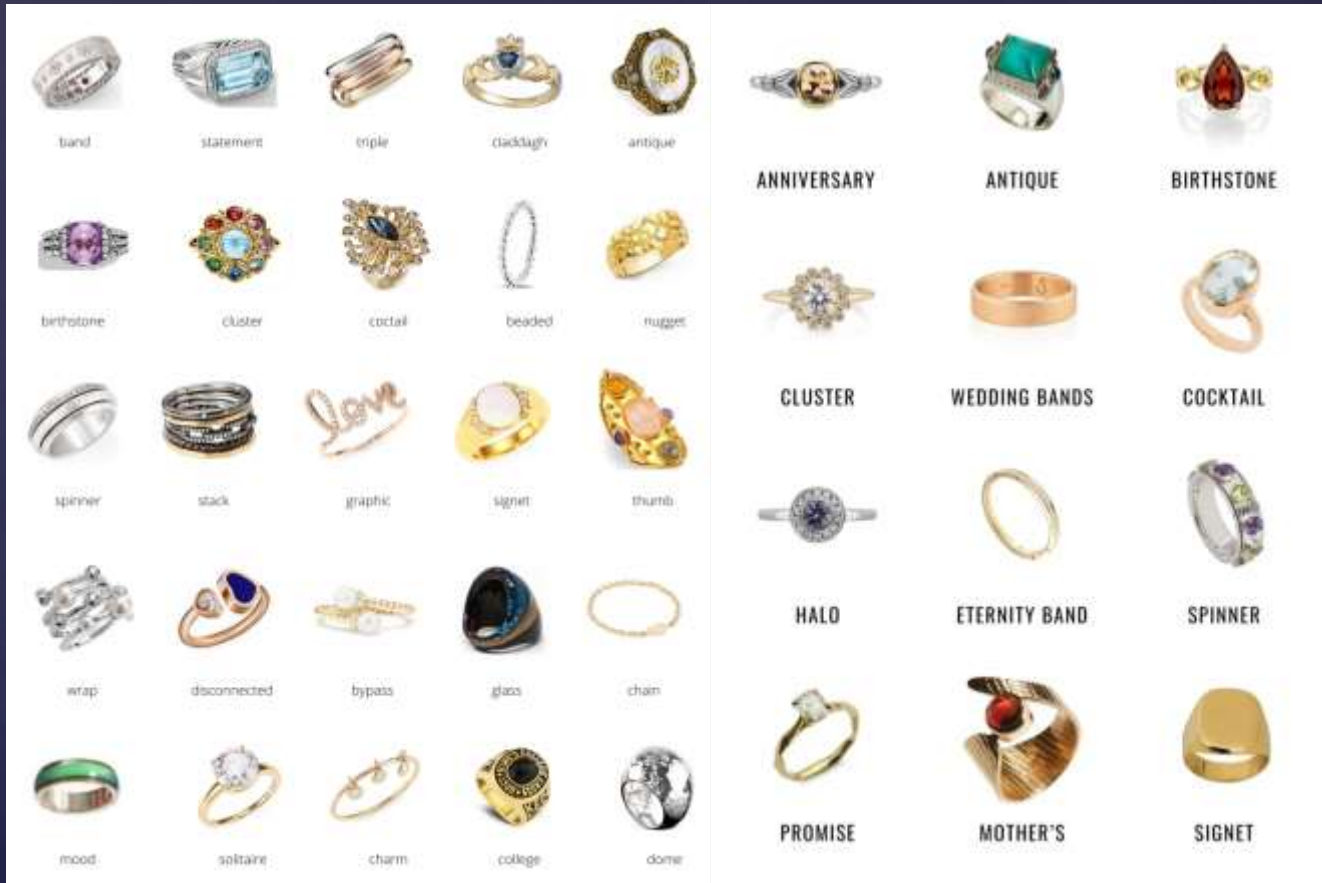


Anatomy of a Ring



Anatomy of a Ring

Types of Rings and Popular Setting Styles



Types of Rings and Popular Setting Styles



Halo



Pavé



Bezel Setting



Split Shank



Three-Stone



Twist Band



Colored Gemstones



East-West Setting



Mixed Metals



Classic Round-Cut Diamond



Art Deco



Edwardian



Victorian



Retro



Milgrain



Filigree



Cluster



Rose Cut

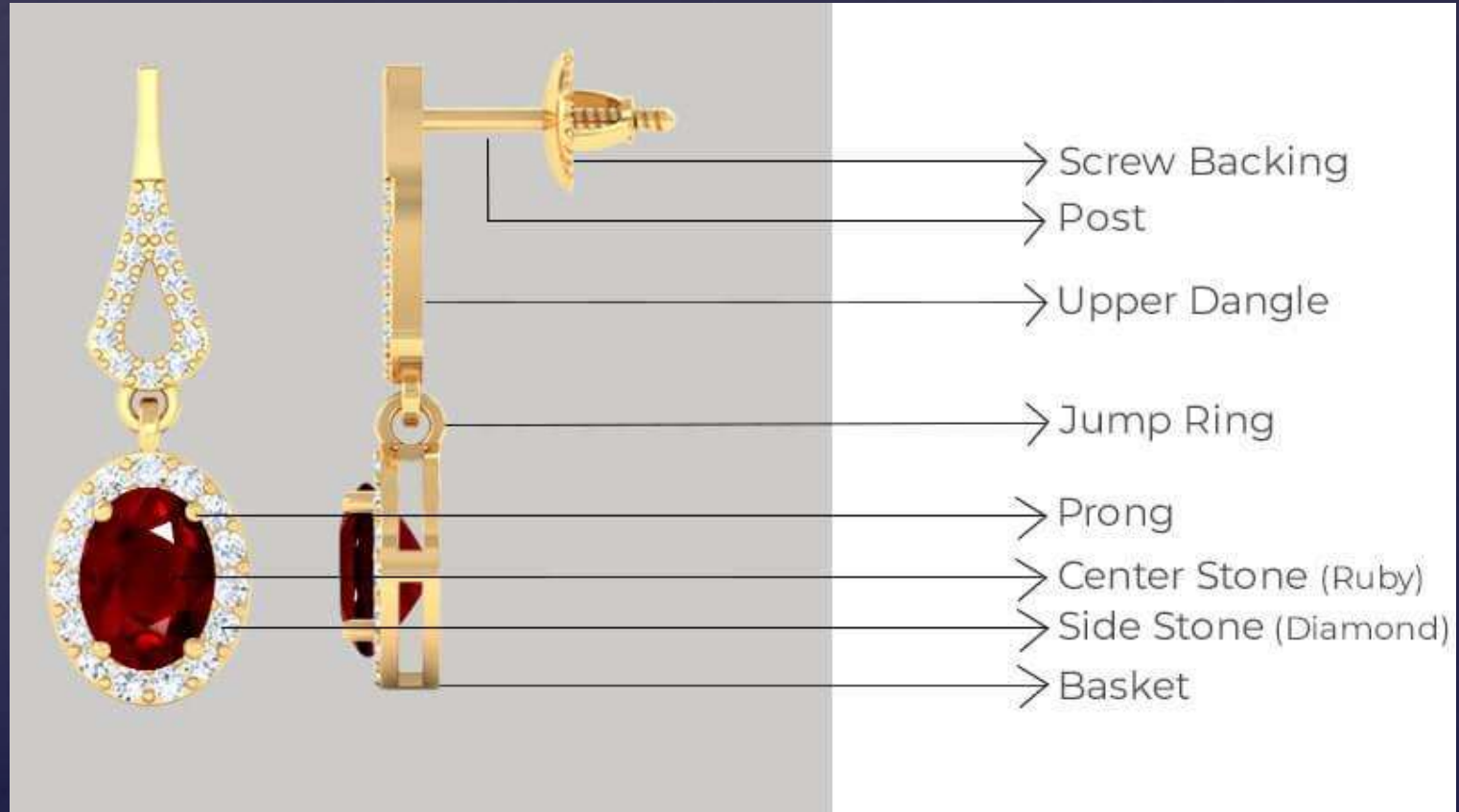


Antique Halo



Solitaire

Anatomy of an Earring



Types of Earrings



STUD



JACKET



EAR SPIKE



PLUG



HUGGIE



DANGLE



THREADER



CHANDELIER



DROP



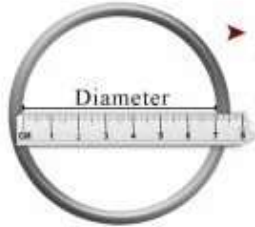
HOOP

Types of Earrings



Anatomy of a Bracelet and Bangle

Method ①

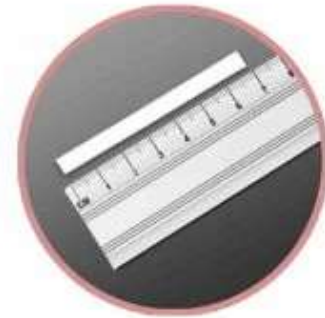


- Measure the inside Diameter of the bangle already you have and compare with the below measurement chart.

Size	Diameter Inches	Diameter Centimeters	Circumference Inches
2.2	2.125	5.4	6.67
2.4	2.25	5.7	7.06
2.6	2.375	6	7.46
2.8	2.5	6.5	7.85
2.10	2.625	6.7	8.24
2.12	2.75	7	8.64

Method ②

- Bring your thumb and little fingers together.
- Measure the circumference of your hand at the widest point using tape or thread.
- Then measure that with a ruler. You will get the circumference of your bangle and compare with the measurement chart.



Types of Bangles

- The solid cylinder type bangle is the most recognized type, where the bangle is a continuous cylinder that slides over a person's wrist.



Types of Bangles

- Plain bangles are a great understated piece of jewelry to compliment an outfit.



Types of Bangles

- Interlocking bangles are usually interlaced in sets of three and tend to be left plain, but the combination of metals and styles create an interesting look.



Types of Bangles

- Cuff bangles, are a more modern take on the traditional cylindrical bangle and tend to be sturdier in structure and design.



Types of Bangles

- Split bangles, also known as spring bangles, allow for a snugger fit, due to their opening and closing feature.



Types of Bangles

- **Embellished** are bangles embellished with precious gem, looks rich, and have opulent designs.



Types of Bangles

- A bangle bracelet is a solid, one piece band that is worn on the wrist and that does not have a clasp or opening. Bangles are usually circular in shape and unlike bracelets, they are not flexible.



Anatomy of a Bracelet

Types of Bracelets



Tennis



Beaded



Chain



Cuff



Leather



Charm



Bangle



Cord



Braided



Bolo



ID



Pearl

Anatomy of a Necklace

A necklace has three main elements. These depend on the style of the necklace.

Metal chains/Cord

The Clasps

The Embellishments or the gemstones

Gemstones/embellishments



Metal chains



Cord



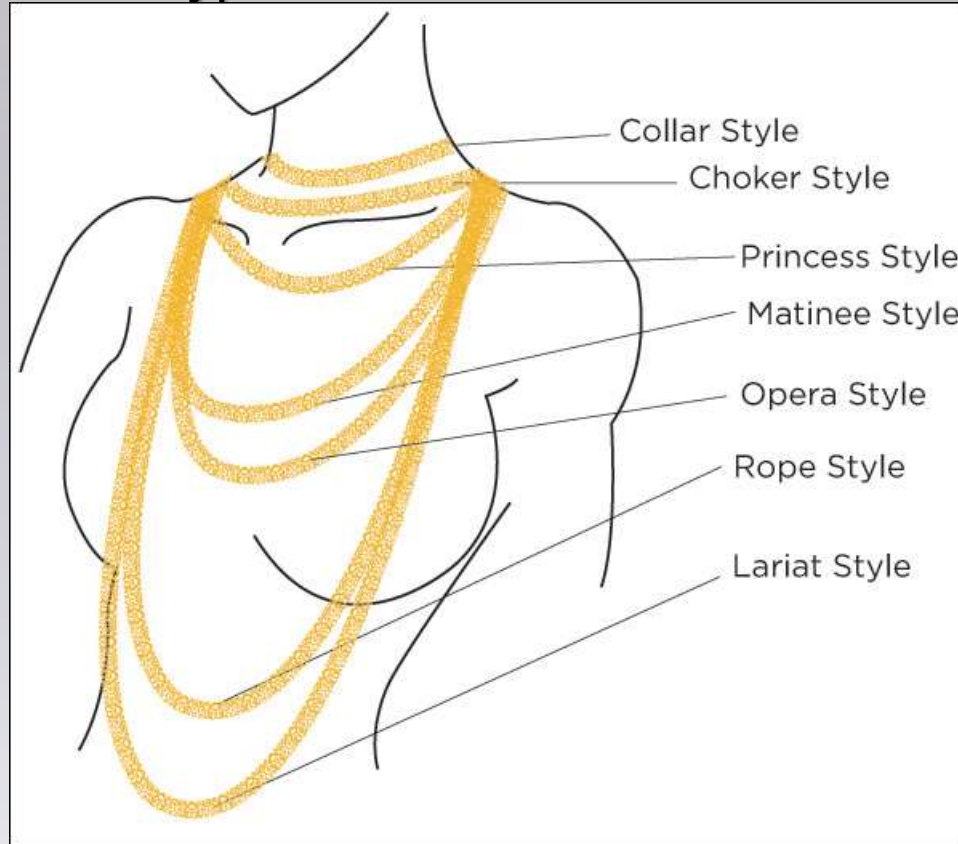
Gemstone strands



Dori



Types of Necklaces



Pendant Necklace



Collar Necklace



Choker Necklace



Princess Necklace



Matinee Necklace



Opera Necklace



Lariat Necklace



Torque Necklace

