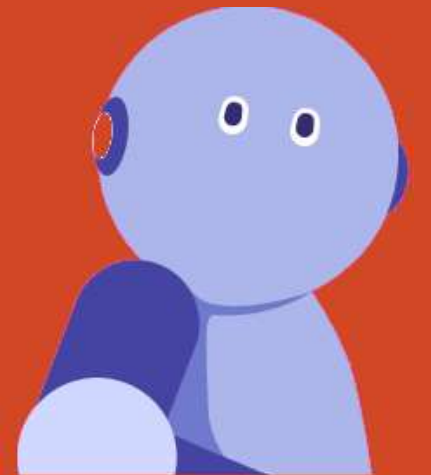
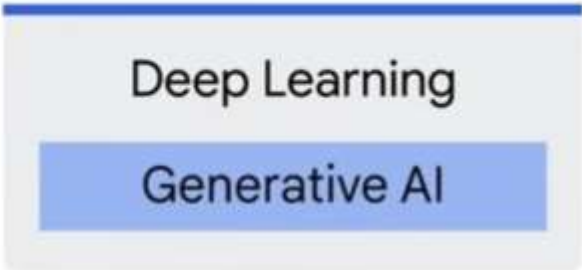
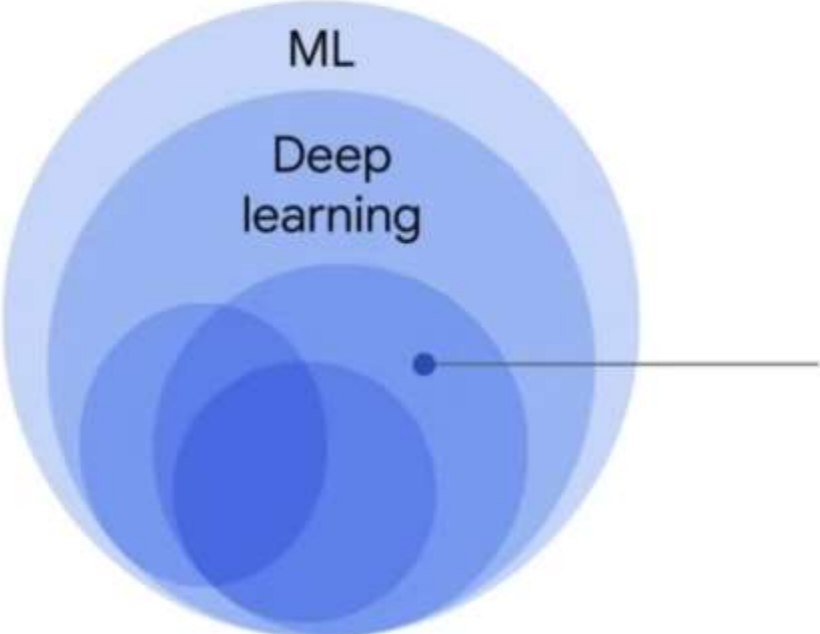


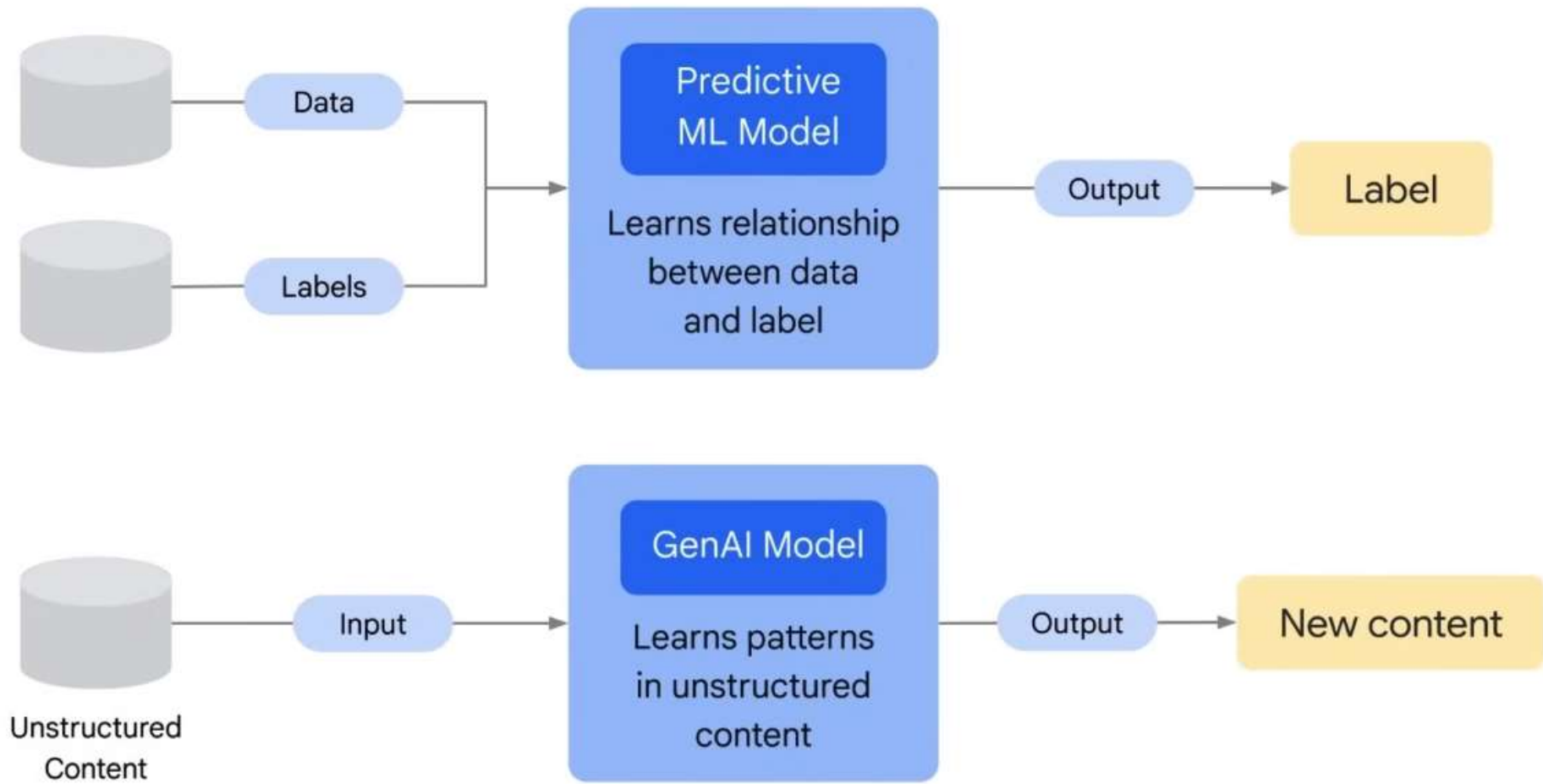
# Generative AI

-Pavan Balaji Nanjundappa

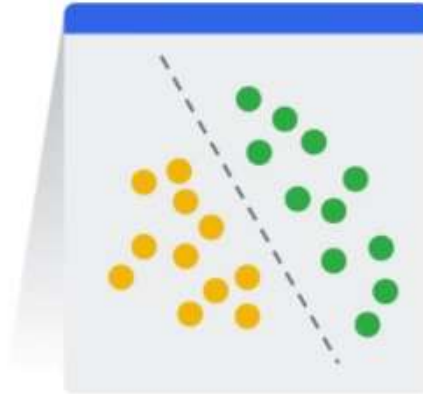


**Generative AI**  
is a **subset of**  
**Deep Learning**



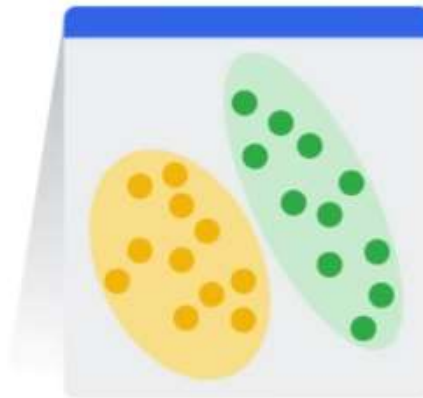


# Deep Learning Model Types



## Discriminative

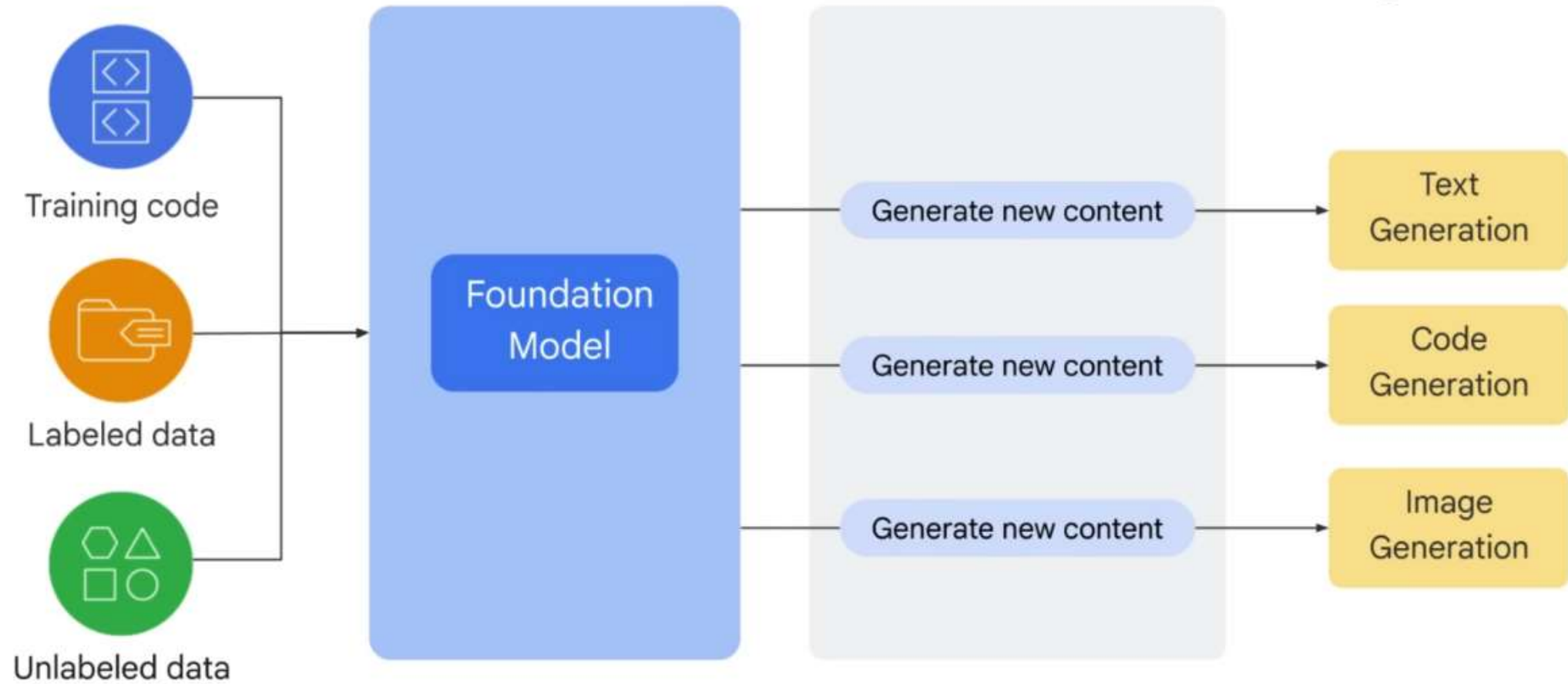
- Used to classify or predict
- Typically trained on a dataset of labeled data
- Learns the relationship between the features of the data points and the labels

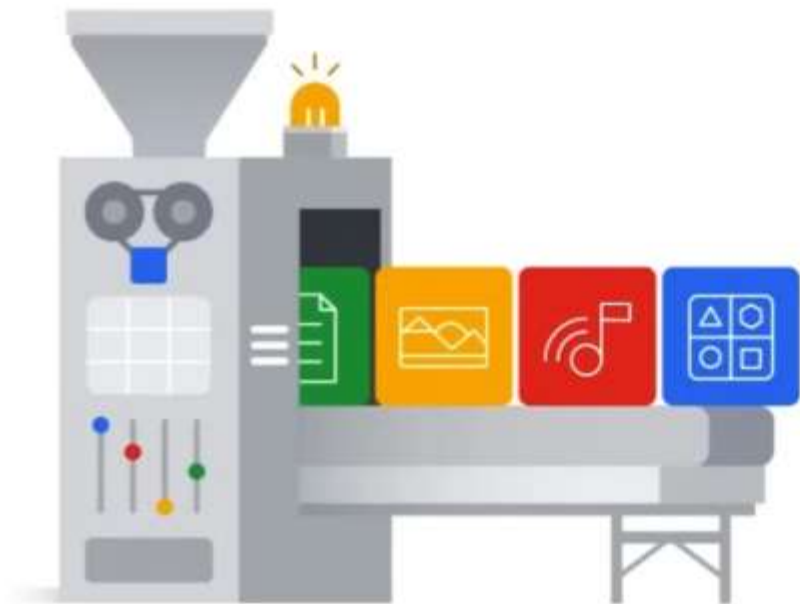


## Generative

- Generates new data that is similar to data it was trained on
- Understands distribution of data and how likely a given example is
- Predict next word in a sequence

# Gen AI Supervised, Semi-Supervised & Unsupervised Learning

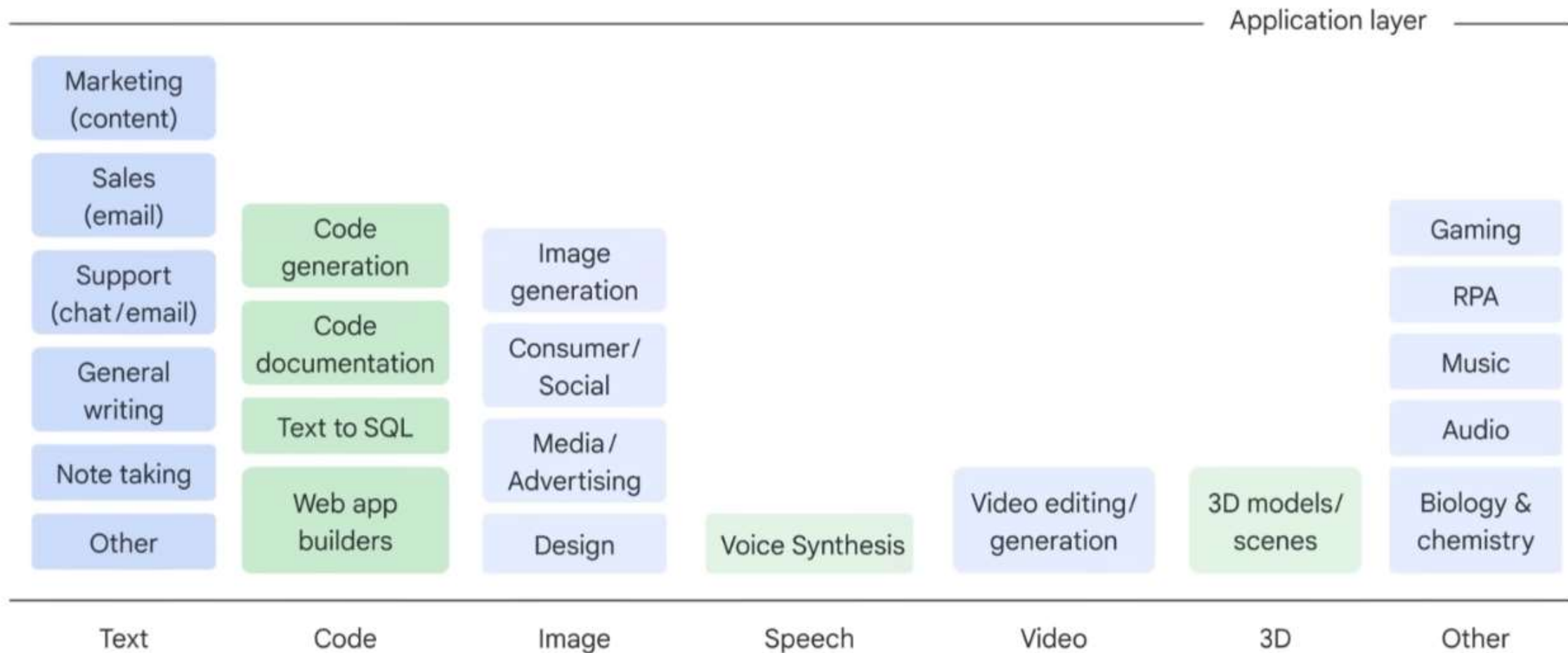




## What is Generative AI?

- GenAI is a type of Artificial Intelligence that creates new content based on what it has learned from existing content.
- The process of learning from existing content is called training and results in the creation of a statistical model.
- When given a prompt, GenAI uses this statistical model to predict what an expected response might be—and this generates new content.

# Application Landscape



Demo