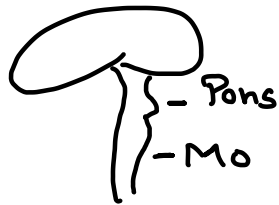


- Regulation of Respiration - Human Physiology
Breathing & Respiration*



BRAIN → BRAIN STEM → PONS → Pneumotoxic Centre



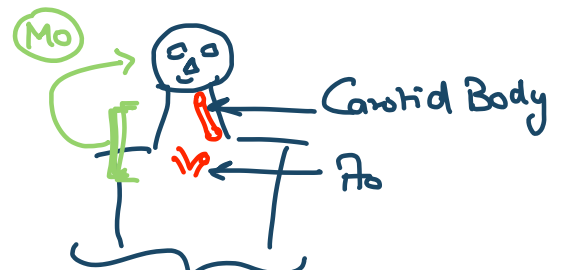
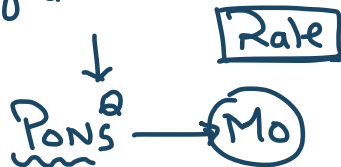
Medulla Oblongata

- Rhythm Centre

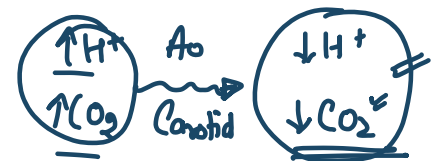
- factors which can Alter Rhythm*

- ① CO₂ levels → ① near Mo
- ② H⁺ → ② Aortic Body
 ↳ Carotid Body

- factor which alters Rate



- Inverse Relation on Rhythm*



Acidosis*

Hyper Ventilate