

101. Match List I with List II :

List I

List II

A. Rhizopus

I. Mushroom

B. Ustilago

II. Smut fungus

C. Puccinia

III. Bread mould

D. Agaricus

IV. Rust fungus

Choose the correct answer from the options given below

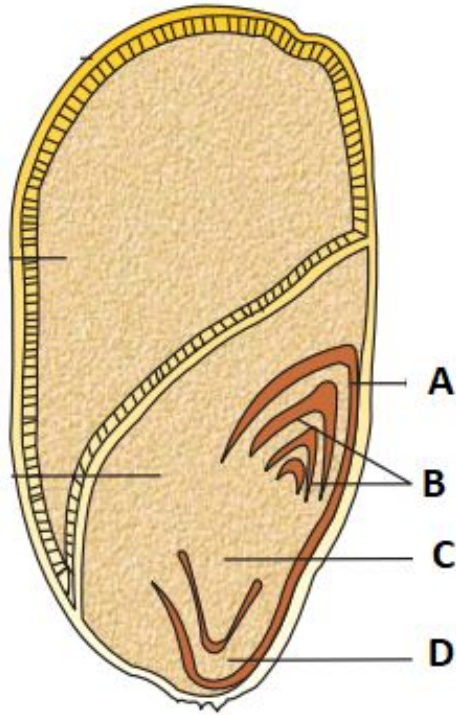
1. A-III, B-II, C-IV, D-I 😊

2. A-I, B-III, C-II, D-IV

3. A-III, B-II, C-I, D-IV

4. A-IV, B-III, C-II, D-I

102. Identify the part of the seed from the given figure which is destined to form root when the seed germinates



1. A

2. B

3. C 😊

4. D

103. Lecithin, a small molecular weight organic compound found in living tissues, is an example of:

1. Amino acids
2. Phospholipids 😊
3. Glycerides
4. Carbohydrates

104. Match List I with List II :

List I

- A. Two or more alternative forms of a gene
- B. Cross of F1 progeny with homozygous recessive parent
- C. Cross of F1 progeny with any of the parents
- D. Number of chromosome sets in plant

List II

- I. Back cross
- II. Ploidy
- III. Allele
- IV. Test cross

Choose the correct answer from the options given below

- 1. A-I, B-II, C-III, D-IV
- 2. A-II, B-I, C-III, D-IV
- 3. A-III, B-IV, C-I, D-II 😊
- 4. A-IV, B-III, C-II, D-I

105. A transcription unit in DNA is defined primarily by the three regions in DNA and these are with respect to upstream and down stream end;

1. Repressor, Operator gene, Structural gene
2. Structural gene, Transposons, Operator gene
3. Inducer, Repressor, Structural gene
4. Promotor, Structural gene, Terminator 😊

106. Auxin is used by gardeners to prepare weed-free lawns. But no damage is caused to grass as auxin

1. promotes apical dominance
2. promotes abscission of mature leaves only
3. does not affect mature monocotyledonous plants 😊
4. can help in cell division in grasses, to produce growth

107. These are regarded as major causes of biodiversity loss:

- A. Over exploitation
- B. Co-extinction
- C. Mutation
- D. Habitat loss and fragmentation
- E. Migration

Choose the correct option:

- 1. A, C and D only
- 2. A, B, C and D only
- 3. A, B and E only
- 4. A, B and D only 😊

108. Match List I with List II :

List I

List II

- | | |
|------------------------------------|-------------------|
| A. <i>Clostridium butylicum</i> | I. Ethanol |
| B. <i>Saccharomyces cerevisiae</i> | II. Streptokinase |
| C. <i>Trichoderma polysporum</i> | III. Butyric acid |
| D. <i>Streptococcus</i> sp. | IV. Cyclosporin-A |

Choose the correct answer from the options given below

1. A-III, B-I, C-I, D-IV

2. A-II, B-IV, C-III, D-I

3. A-III, B-I, C-IV, D-II 😊

4. A-IV, B-I, C-III, D-II

109. Spindle fibers attach to kinetochores of chromosomes during

1. Prophase
2. Metaphase 😊
3. Anaphase
4. Telophase

110. Which of the following is an example of actinomorphic flower?

1. Datura 
2. Cassia
3. Pisum
4. Sesbania