

SpecBuilder 6.5

File Tools Window Help

SpecBuilder

EDIFECS
SPECBUILDER 6.5

Healthcare Edition

Welcome to SpecBuilder!

We believe that you will find that SpecBuilder significantly reduces the time it takes to: create, annotate, test, publish and migrate your electronic business (e-business) guideline documents. You can create guideline documents from scratch or use SpecBuilder's comprehensive library of Standards templates as a quick starting point.

We are always looking for ideas to improve our product and welcome your feedback and suggestions. Please contact us at support@edifecs.com if we can be of assistance.

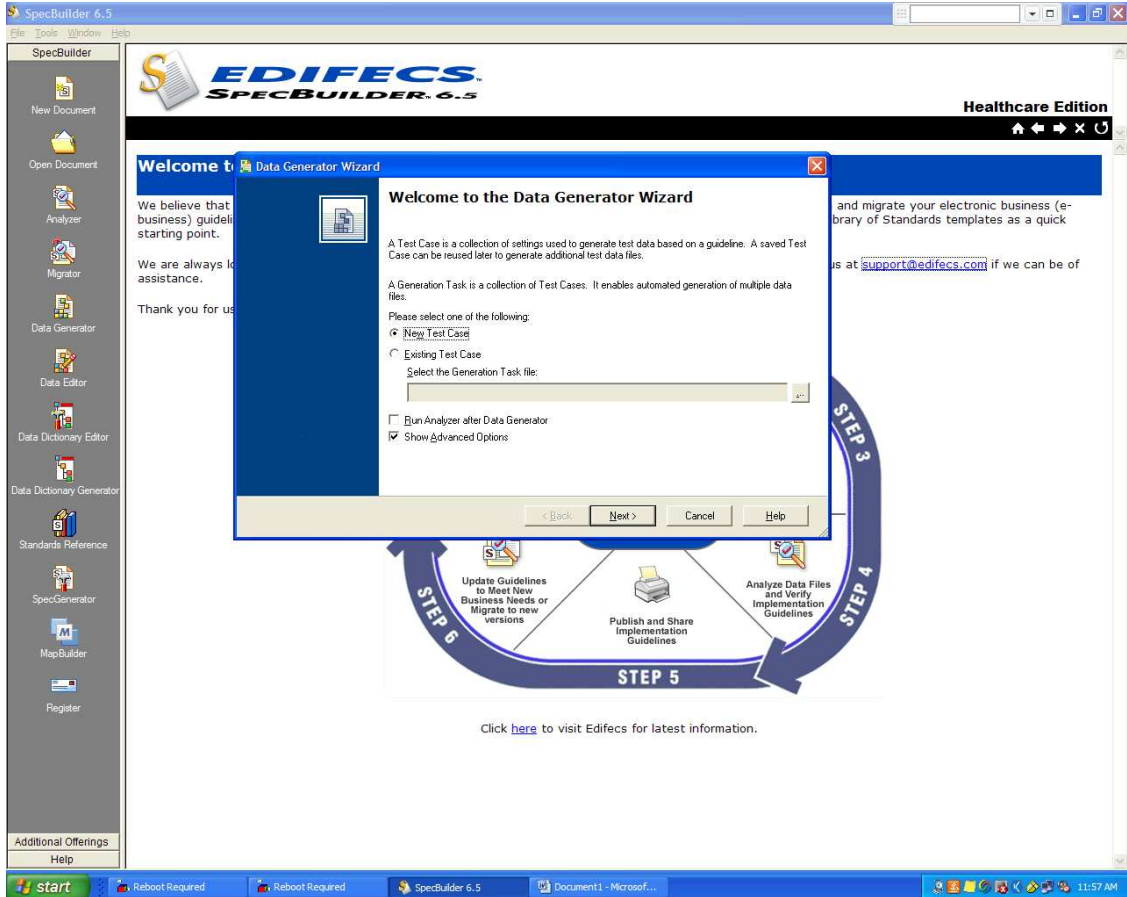
Thank you for using SpecBuilder.

Click [here](#) to visit Edifecs for latest information.

Additional Offerings

Help

start Reboot Required Reboot Required SpecBuilder 6.5 11:56 AM



SpecBuilder 6.5

File Tools Window Help

EDIFECS
SPECBUILDER 6.5

Healthcare Edition

Welcome to Data Generator Wizard

Create or update data file
Please select a Data Generator Test Case Action

Data Generator can either generate new data or update an existing data file using specified data dictionaries

Please select the action Data Generator should perform:

Generate
 Update

Please specify the data file that should be used as the base file during data generation. This file will be first parsed and analyzed:

Specify data file type:
EDI

< Back Next > Cancel Help

STEP 3

STEP 4

STEP 5

STEP 6

Update Guidelines to Meet New Business Needs or Migrate to new versions

Publish and Share Implementation Guidelines

Analyze Data Files and Verify Implementation Guidelines

We believe that (business) guidelines starting point.

We are always looking for assistance.

Thank you for using Edifecs and migrate your electronic business (e-library of Standards templates as a quick

as at support@edifecs.com if we can be of

Click [here](#) to visit Edifecs for latest information.

Additional Offerings
Help

Start Reboot Required Reboot Required SpecBuilder 6.5 Document1 - Microsof... 11:57 AM

SpecBuilder 6.5
File Tools Window Help

EDIFECs
SPECBUILDER 6.5

Healthcare Edition

Welcome to the Data Generator Wizard

We believe that business guidelines are the starting point. We are always looking for assistance. Thank you for using SpecBuilder.

and migrate your electronic business (e-library of Standards templates as a quick response to your needs. Contact us at support@edifecs.com if we can be of assistance.

Guideline selection
Please select a guideline

From the database From a guideline file

- Delimited Flat File
- EDI
- HL7
- NCPDP
- Positional Flat File

V4010A1

- 830-A1 - Eligibility, Coverage or Benefit Inquiry
- 271-A1 - Eligibility, Coverage or Benefit Information
- 276-A1 - Health Care Claim Status Request
- 277-A1 - Health Care Claim Status Notification
- 278-A1 - Health Care Services Review - Request for Review
- 278-A2 - Health Care Services Review - Response to Request for Review
- 820-A1 - Payment Order/Remittance Advice
- 834-A1 - Benefit Enrollment and Maintenance
- 835-W1 - Health Care Claim Payment/Advice
- 837-Q1 - Health Care Claim: Professional
- 837-Q2 - Health Care Claim: Dental
- 837-Q3 - Health Care Claim: Institutional

Eligibility, Coverage or Benefit Inquiry

< Back Next > Cancel Help

STEP 3

STEP 4

Analyze Data Files and Verify Implementation Guidelines

STEP 5

Publish and Share Implementation Guidelines

STEP 6

Update Guidelines to Meet New Business Needs or Migrate to new versions

Click [here](#) to visit Edifecs for latest information.

Additional Offerings
Help

start Reboot Required Reboot Required SpecBuilder 6.5 Document1 - Microsof... 11:57 AM

SpecBuilder 6.5
File Tools Window Help

EDIFECS
SPECBUILDER 6.5

Healthcare Edition

Welcome to Data Generator Wizard

Envelope Segments
Please specify Envelope Segments

The selected guideline does not have Envelope Segments. To use Envelope Segments please select from following options:

- Select Envelope Segments from the Standards Database
- Use Envelope Segments from the external guideline file
- Use Envelope Segments from multiple guideline files

< Back Next > Cancel Help

STEP 3
STEP 4
STEP 5
STEP 6

Update Guidelines to Meet New Business Needs or Migrate to new versions

Publish and Share Implementation Guidelines

Analyze Data Files and Verify Implementation Guidelines

Click [here](#) to visit Edifecs for latest information.

Additional Offerings
Help

Reboot Required Reboot Required SpecBuilder 6.5 Document1 - Micros... Document2 - Micros... Microsoft Outlook W... 12:00 PM

SpecBuilder 6.5

File Tools Window Help

EDIFECs
SPECBUILDER 6.5

Healthcare Edition

Welcome to Data Generator Wizard

We believe that business guidelines are the starting point. We are always looking for assistance. Thank you for using Edifecs.

and migrate your electronic business (e-library of Standards templates as a quick response to your needs. Contact our support team at support@edifecs.com if we can be of any assistance.

Envelope Segments
Please select Envelope Segments from the database

HIPAA - V4010-030A1 - 270 - Eligibility, Coverage or Benefit Inquiry

Envelopes

- 00307
- 012N - Property & Casualty
- 00406
- 00404
- 00402
- 00401
- 00307
- 00306
- 00305
- HIPAA
- 5010
- 5010 - with optional segments
- 4010A1
- 4010A1 - with optional segments

Preview

- 270 - Eligibility, Coverage or Benefit Inquiry
- ISA Interchange Control Header
- GS Functional Group Header
- ... Objects ...
- GE Functional Group Trailer
- IEA Interchange Control Trailer

< Back Next > Cancel Help

STEP 3

STEP 4

STEP 5

STEP 6

Update Guidelines to Meet New Business Needs or Migrate to new versions

Publish and Share Implementation Guidelines

Analyze Data Files and Verify Implementation Guidelines

Click [here](#) to visit Edifecs for latest information.

Additional Offerings

Help

start Reboot Required Reboot Required SpecBuilder 6.5 Document1 - Micros... Document2 - Micros... Microsoft Outlook W... 12:00 PM

SpecBuilder 6.5
File Tools Window Help

EDIFECS
SPECBUILDER 6.5

Healthcare Edition

Welcome to Data Generator Wizard

Envelope Segments
Please specify how to use the selected Envelope Segments

How do you want to use the selected Envelope Segments?

- Insert in the guideline
- Use directly from the Standards Database
- Save as an External Envelope Segments guideline that can be reused later:

< Back Next > Cancel Help

STEP 3
STEP 4
STEP 5
STEP 6

Update Guidelines to Meet New Business Needs or Migrate to new versions

Publish and Share Implementation Guidelines

Analyze Data Files and Verify Implementation Guidelines

We believe that (business) guideline starting point. We are always looking for assistance. Thank you for using Edifecs.

and migrate your electronic business (e-library of Standards templates as a quick reference) as at support@edifecs.com if we can be of assistance.

Click [here](#) to visit Edifecs for latest information.

Additional Offerings
Help

Start | Reboot Required | Reboot Required | SpecBuilder 6.5 | Document1 - Micros... | Document2 - Micros... | Microsoft Outlook W... | 12:00 PM

SpecBuilder 6.5
File Tools Window Help

EDIFECS
SPECBUILDER 6.5

Healthcare Edition

Welcome to Data Generator Wizard

We believe that business guidelines are the starting point. We are always looking for assistance. Thank you for using Edifecs.

and migrate your electronic business (e-library of Standards templates as a quick response at support@edifecs.com if we can be of assistance.

Data Generator options
Please select data generation options

These settings determine how optional data is generated

- Mandatory data only
- Mandatory + Optional data in the dictionary
- Mandatory + Percentage of optional data
- No optional data
- All data

Select the property to be used to determine if item is mandatory or optional

- User Option
- Standard Option

< Back Next > Cancel Help

STEP 3
STEP 4
STEP 5
STEP 6

Update Guidelines to Meet New Business Needs or Migrate to new versions

Publish and Share Implementation Guidelines

Analyze Data Files and Verify Implementation Guidelines

Click [here](#) to visit Edifecs for latest information.

Additional Offerings
Help

Start Reboot Required Reboot Required SpecBuilder 6.5 Document1 - Micro... Document2 - Micro... Microsoft Outlook W... 12:00 PM

SpecBuilder 6.5
File Tools Window Help

EDIFECS
SPECBUILDER 6.5

Healthcare Edition

Welcome to Data Generator Wizard

We believe that (business) guidelines are the starting point. We are always looking for assistance. Thank you for using Edifecs.

and migrate your electronic business (e-library of Standards templates as a quick reference) as at support@edifecs.com if we can be of assistance.

Element Size
Please select Data Generator Element Size option

Please select Element Size Option to control the size of data elements:

- Minimum size. Creates data which has the minimum allowable length.
- Maximum size. Creates data which has the maximum allowable length.
- Valid size. Creates data which is between minimum and maximum allowable length. Dictionary values are adjusted.
- Any size. Creates data which is between minimum and maximum allowable length. Dictionary values are used as is.

< Back Next > Cancel Help

STEP 3
STEP 4
STEP 5
STEP 6

Update Guidelines to Meet New Business Needs or Migrate to new versions

Publish and Share Implementation Guidelines

Analyze Data Files and Verify Implementation Guidelines

Click [here](#) to visit Edifecs for latest information.

Additional Offerings
Help

Start Reboot Required Reboot Required SpecBuilder 6.5 Document1 - Micros... Document2 - Micros... Microsoft Outlook W... 12:00 PM

SpecBuilder 6.5
File Tools Window Help

EDIFECS
SPECBUILDER 6.5

Healthcare Edition

Welcome to Data Generator Wizard

Index Reset
Please set Data Generator Index Reset option

We believe that (business) guidelines starting point.
We are always looking for assistance.
Thank you for using SpecBuilder.

and migrate your electronic business (e-library of Standards templates as a quick
as at support@edifecs.com if we can be of

Please select one of the following:

- Transaction
- Functional Group
- Interchange
- Do not reset

< Back Next > Cancel Help

STEP 1 Update Guidelines to Meet New Business Needs or Migrate to new versions

STEP 2 Publish and Share Implementation Guidelines

STEP 3 Analyze Data Files and Verify Implementation Guidelines

STEP 4

STEP 5

STEP 6

Click [here](#) to visit Edifecs for latest information.

Additional Offerings
Help

start Reboot Required Reboot Required SpecBuilder 6.5 Document1 - Micro... Document2 - Micro... Microsoft Outlook W... 12:00 PM

SpecBuilder 6.5
File Tools Window Help

EDIFECs
SPECBUILDER 6.5

Healthcare Edition

Welcome to Data Generator Wizard

We believe that business) guideline starting point.
We are always looking for assistance.
Thank you for using Edifecs.

and migrate your electronic business (e-library of Standards templates as a quick
as at support@edifecs.com if we can be of

Repeat Count
Please set Data Generator Repeat Count option

Please set the Repeat Count option to control how many messages to generate:

Transactions: 1
Functional Groups: 1
Interchanges: 1

< Back Next > Cancel Help

STEP 3
STEP 4
STEP 5
STEP 6

Update Guidelines to Meet New Business Needs or Migrate to new versions
Publish and Share Implementation Guidelines
Analyze Data Files and Verify Implementation Guidelines

Click [here](#) to visit Edifecs for latest information.

Additional Offerings
Help

Start Reboot Required Reboot Required SpecBuilder 6.5 Document1 - Micros... Document2 - Micros... Microsoft Outlook W... 12:00 PM

SpecBuilder 6.5

File Tools Window Help

EDIFECS
SPECBUILDER 6.5

Healthcare Edition

Welcome to Data Generator Wizard

Data Dictionaries
Please select Data Dictionaries to use by Data Generator

More Dictionaries:
Sample_317A_310
Sample_4010_BSS
Sample_D97A_Orders
Sample_HIPAA_276

Selected Dictionaries:

Data from dictionaries listed first will be used first.

< Back Next > Cancel Help

STEP 3
STEP 4
STEP 5
STEP 6

Update Guidelines to Meet New Business Needs or Migrate to new versions

Publish and Share Implementation Guidelines

Analyze Data Files and Verify Implementation Guidelines

We believe that business) guidel starting point.

We are always k assistance.

Thank you for us

and migrate your electronic business (e-brary of Standards templates as a quick

as at support@edifecs.com if we can be of

Click [here](#) to visit Edifecs for latest information.

Additional Offerings
Help

Start Reboot Required Reboot Required SpecBuilder 6.5 Document1 - Micros... Document2 - Micros... Microsoft Outlook W... 12:01 PM

SpecBuilder 6.5

File Tools Window Help

EDIFECs
SPECBUILDER 6.5

Healthcare Edition

Welcome to the Data Generator Wizard

Delimiters
Please set delimiters to use by Data Generator when generating data file

Edit delimiters

| Name | Ascii Value | Hex Value |
|-----------------------|-------------|-----------|
| Segment Terminator | CRLF | 0D0A |
| Element Separator | ~ | 7E |
| Sub-Element Separator | \ | 5C |
| Repetition Separator | * | 2A |
| Release Character | ? | 3F |
| Decimal Indicator | . | 2E |

Specify filler characters

< Back Next > Cancel Help

STEP 1: Update Guidelines to Meet New Business Needs or Migrate to new versions

STEP 2: Publish and Share Implementation Guidelines

STEP 3: Analyze Data Files and Verify Implementation Guidelines

STEP 4: (Implied)

STEP 5: (Implied)

STEP 6: (Implied)

We believe that (business) guidelines starting point.

We are always looking for assistance.

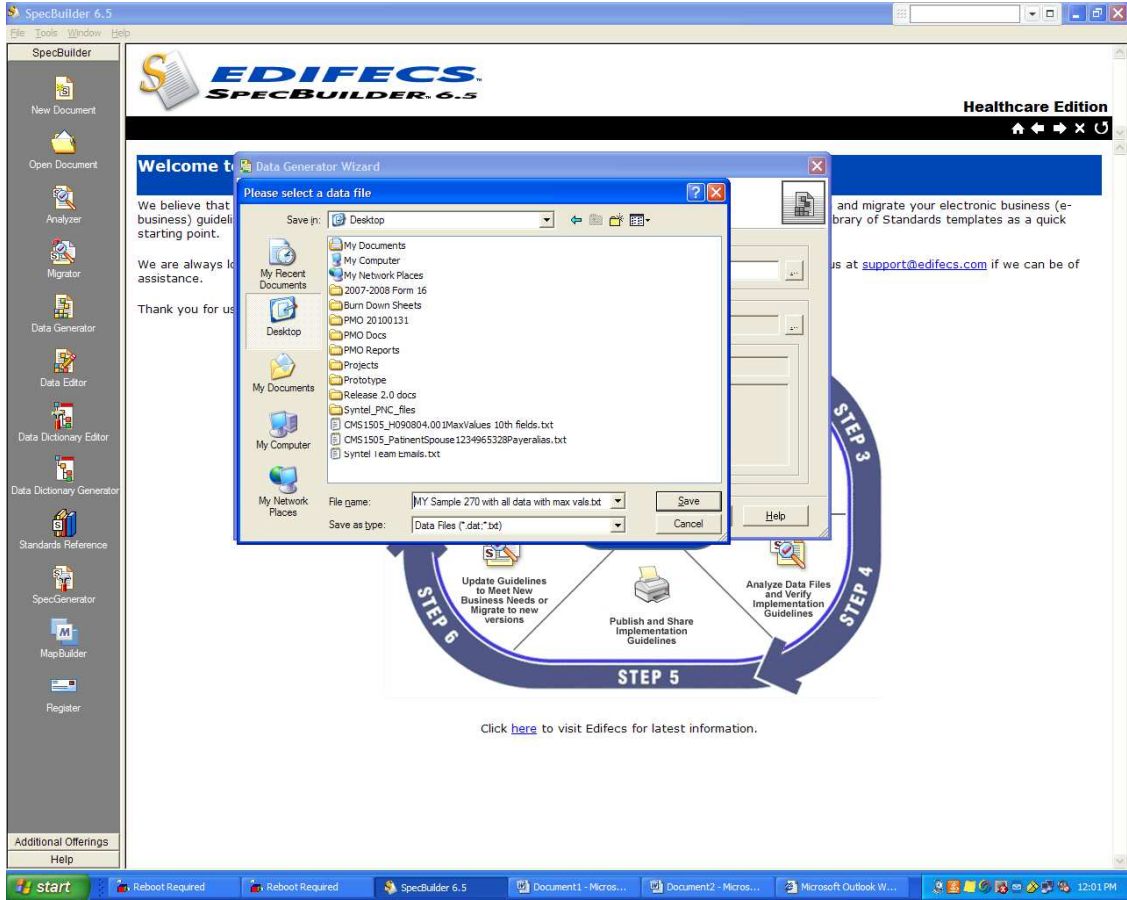
Thank you for using Edifecs and migrate your electronic business (e-library of Standards templates as a quick

as at support@edifecs.com if we can be of

Click [here](#) to visit Edifecs for latest information.

Additional Offerings
Help

start Reboot Required Reboot Required SpecBuilder 6.5 Document1 - Micros... Document2 - Micros... Microsoft Outlook W... 12:01 PM



SpecBuilder 6.5
File Tools Window Help

EDIFECS
SPECBUILDER 6.5

Healthcare Edition

Test Case Save
Please save the Test Case

Output Data file name
C:\Documents and settings\user16436\Desktop\MY Sample 270 with all data with max vals.txt

Save Test Case to the Generation Task file

Test Case Options
Name: _____
Description: _____

< Back Next > Cancel Help

STEP 3
STEP 4
STEP 5
STEP 6

Update Guidelines to Meet New Business Needs or Migrate to new versions

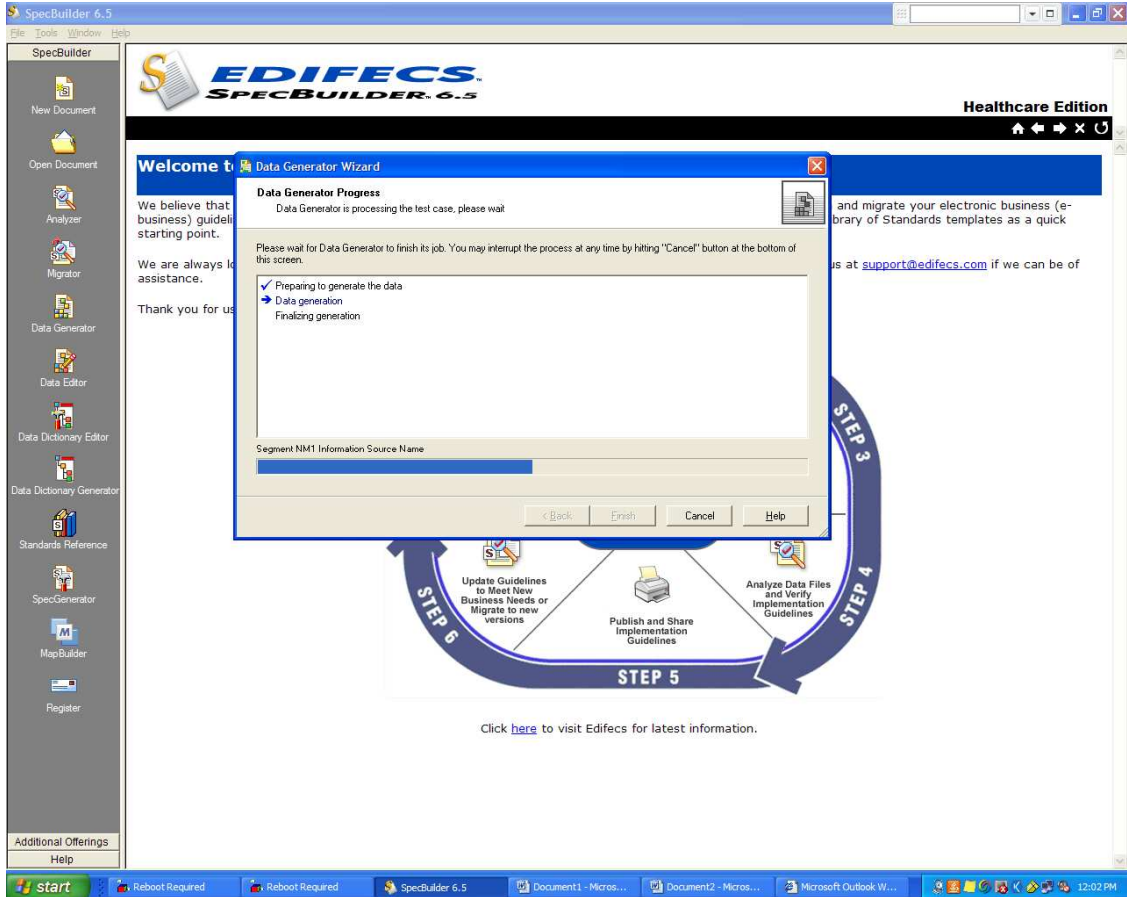
Publish and Share Implementation Guidelines

Analyze Data Files and Verify Implementation Guidelines

Click [here](#) to visit Edifecs for latest information.

Additional Offerings
Help

Start Reboot Required Reboot Required SpecBuilder 6.5 Document1 - Micros... Document2 - Micros... Microsoft Outlook W... 12:02 PM



Spec1 - SpecBuilder 6.5 - [HIPAA-V4010X092A1]

File Edit View Tools Window Help

Data: c:\documents and settings\vc...MY Sample 270 with all data with max vals.txt

Guideline

- X12 Guideline
 - V4010X092A1 - 270 Eligibility, Coverage or Ben
 - ST 010 Transaction Set Header
 - BHT 020 Beginning of Hierarchical Trans
 - 2000A 010 Information Source Level
 - 2000B 010 Information Receiver Level
 - 2000C 010 Subscriber Level
 - 2000D 010 Dependent Level
 - SE 210 Transaction Set Trailer

Data

- Interchange
 - ISA~00~Authorizat~00~Security~1~01~Interchange Sen~01~Interchange Rec~110306~1202~U~00401~000000001~0~P~\
 - Group
 - GS
 - HS
 - Application Sen
 - Application Rec
 - 20110306
 - 12020900
 - I
 - X
 - 004010X092A1
 - Transaction
 - ST~270~0001
 - BHT~0022~01~Reference Identification Refer~20110306~12020900
 - (Loop 2000A)
 - HL~1~20~1
 - (Loop 2100A)
 - NM1~2B
 - (Loop 2000B)
 - HL~2~1~21~
 - (Loop 2100B)
 - NM1~1P~
 - (Loop 2000C)
 - HL~3~2~22~
 - (Loop 2100C)
 - NM1~IL~1
 - SE~9~0001
 - GE~1~1

Wizard Result

Data Generator finished with warnings or errors. please see the bottom pane for list of reported errors. Clicking on the error will take you to the proper place in the file and guideline.

OK

Do not show this dialog in future

Data Generator Log

| # | Message |
|---|-------------------------------|
| 1 | Warning: Valid code not found |
| 2 | Warning: Valid code not found |
| 3 | Warning: Valid code not found |
| 4 | Warning: Valid code not found |

NUM

start Reboot Required Reboot Required SpecBuilder 6.5 Spec1 - SpecBuilder... Document1 - Micros... Microsoft Outlook W... 12:02 PM

Spec1 - SpecBuilder 6.5 - [HIPAA-V4010X092A1]

File Edit View Tools Window Help

Data: c:\documents and settings\jcx...MY Sample 270 with all data with max vals.txt

Guideline

- X12 Guideline
 - V4010X092A1 - 270 Eligibility, Coverage or Ben
 - ST 010 Transaction Set Header
 - BHT 020 Beginning of Hierarchical Trans
 - 2000A 010 Information Source Level
 - 2000B 010 Information Receiver Level
 - 2000C 010 Subscriber Level
 - 2000D 010 Dependent Level
 - SE 210 Transaction Set Trailer

Data

- Interchange
 - ISA~00~Authzcat~00~Security~1~01~Interchange Sen~01~Interchange Rec~110306~1202~U~00401~000000001~0~P~\
 - Group
 - GS
 - HS
 - Application Sen
 - Application Rec
 - 20110306
 - 12020900
 - I
 - X
 - 004010X092A1
 - Transaction
 - ST~270~0001
 - BHT~0022~01~Reference Identification Refer~20110306~12020900
 - (Loop 2000A)
 - HL~1~1~20~1
 - (Loop 2100A)
 - NM1~2B~1~24~00001
 - (Loop 2000B)
 - HL~2~1~21~1
 - (Loop 2100B)
 - NM1~1P~1~24~Identification Code Identification Code Identification Code Identification Code
 - (Loop 2000C)
 - HL~3~2~22~0
 - (Loop 2100C)
 - NM1~IL~1
 - SE~S~0001
 - GE~1~1
 - IEA~1~1~000000001

Data Generator Log

| # | Message |
|---|-------------------------------|
| 1 | Warning: Valid code not found |
| 2 | Warning: Valid code not found |
| 3 | Warning: Valid code not found |
| 4 | Warning: Valid code not found |

Ready

NUM

start Reboot Required Reboot Required SpecBuilder 6.5 Spec1 - SpecBuilder... Document1 - Micros... Microsoft Outlook W... 12:02 PM

```
1 TSB-00-Authorizat-00-Security I-01-Interchange Sen-01-Interchange Rec-110306-1202-U-00401-000000001-0-P-\
2 GS-HS-Application Sen-Application Rec-20110306-12020900-1-X-004010X092A1
3 ST-270-0001
4 BHT-0022-01-Reference Identification Refer-20110306-12020900
5 HL-1--20-1
6 NM1-25-1-----24-00001
7 HL-2-1-21-1
8 NM1-1P-1-----24-Identification Code Identification Code Identification Code Identification Code
9 HL-3-2-22-0
10 NM1-1L-1
11 SE-9-0001
12 GE-1-1
13 IEA-1-000000001
14
```