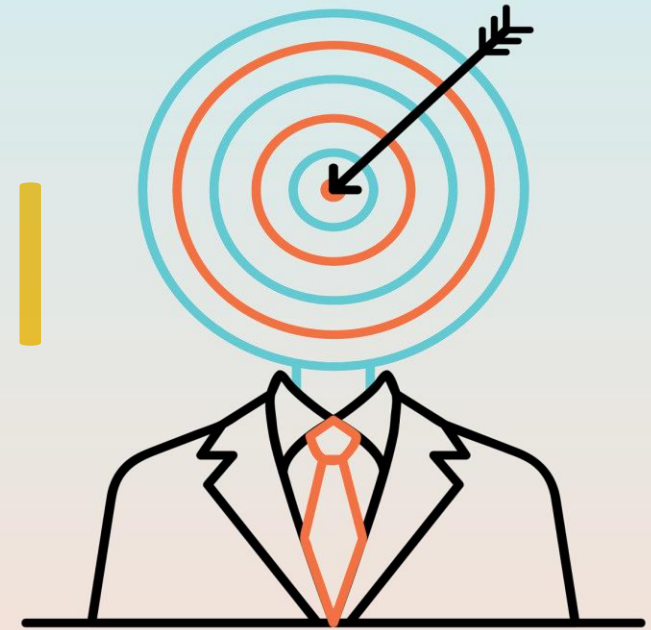




Business Intelligence tools for the new data landscape

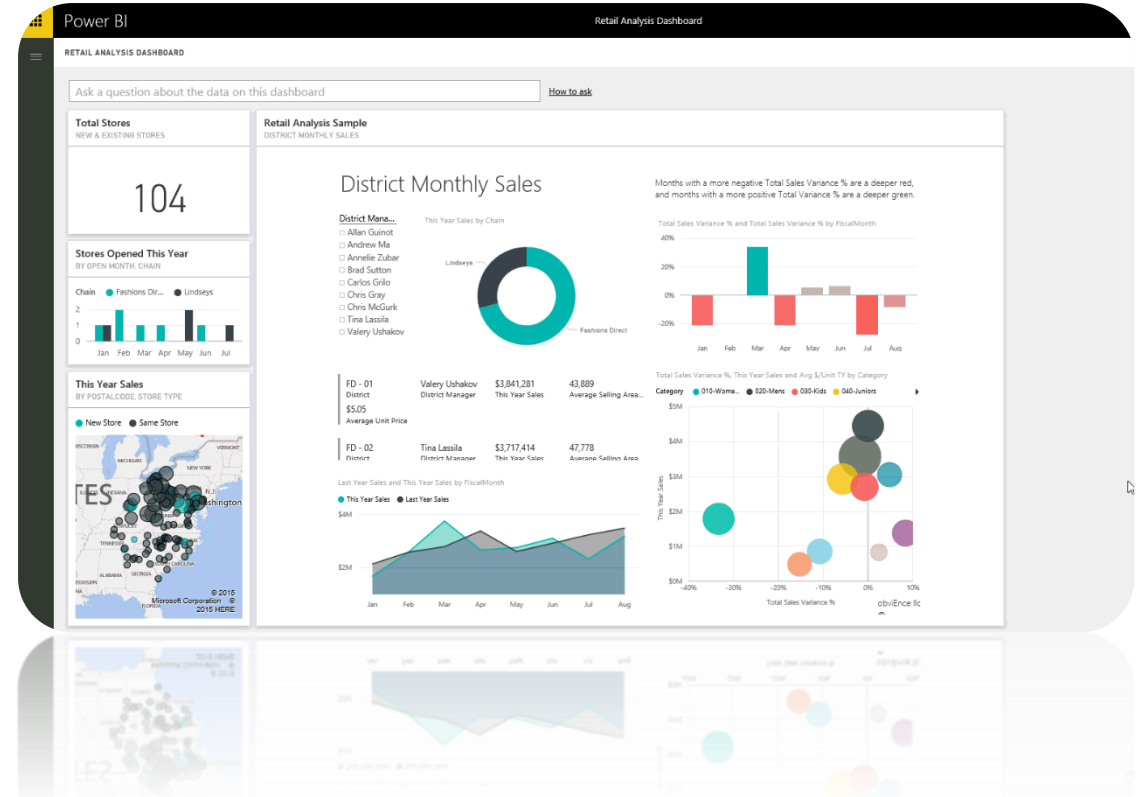
Power BI



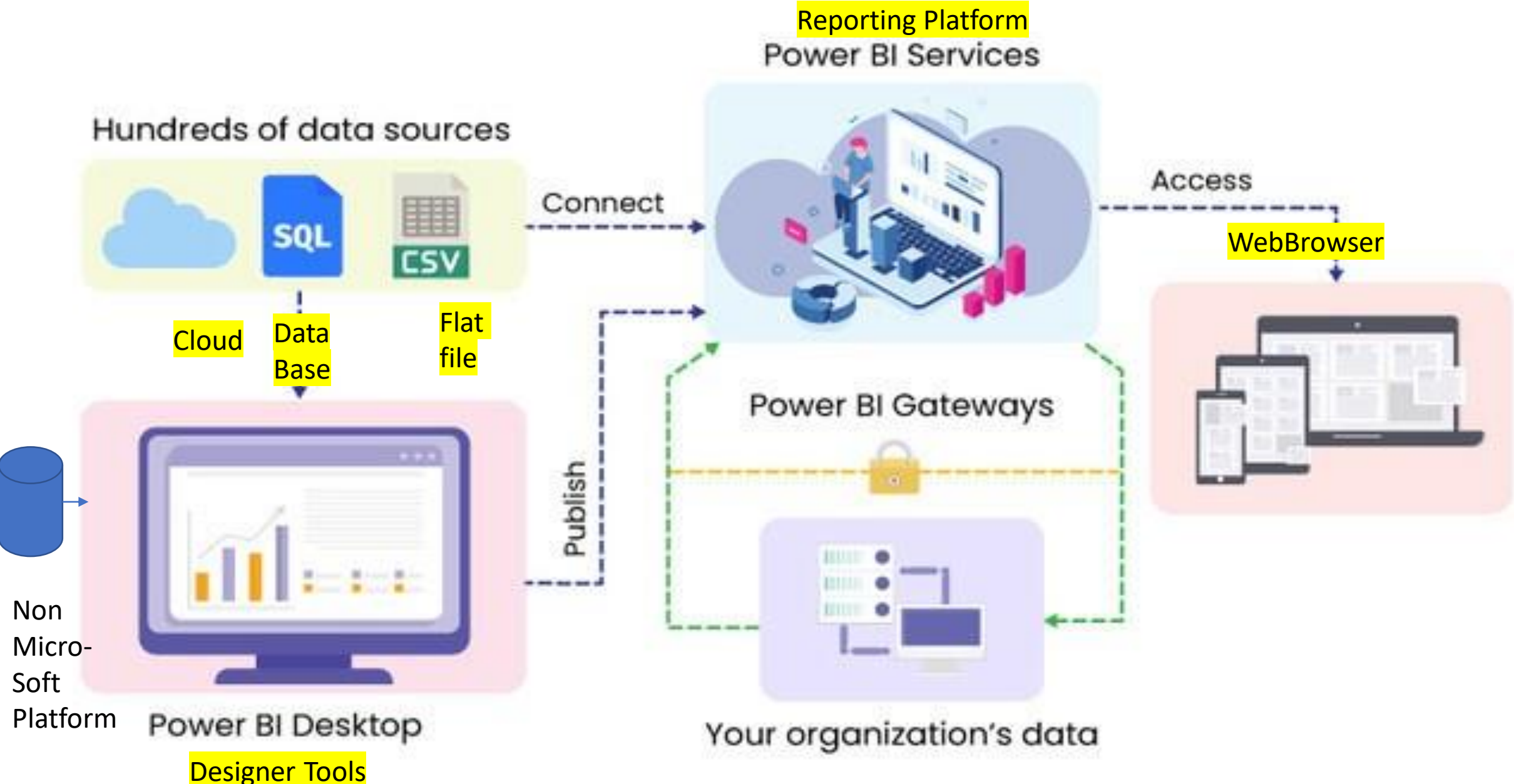
What is Power BI?

Power BI is a collection of software services that work together to turn your unrelated sources of data into interactive insights.

Power BI lets you easily connect to your data sources, visualize (or discover) what's important, and share that with anyone or everyone you want

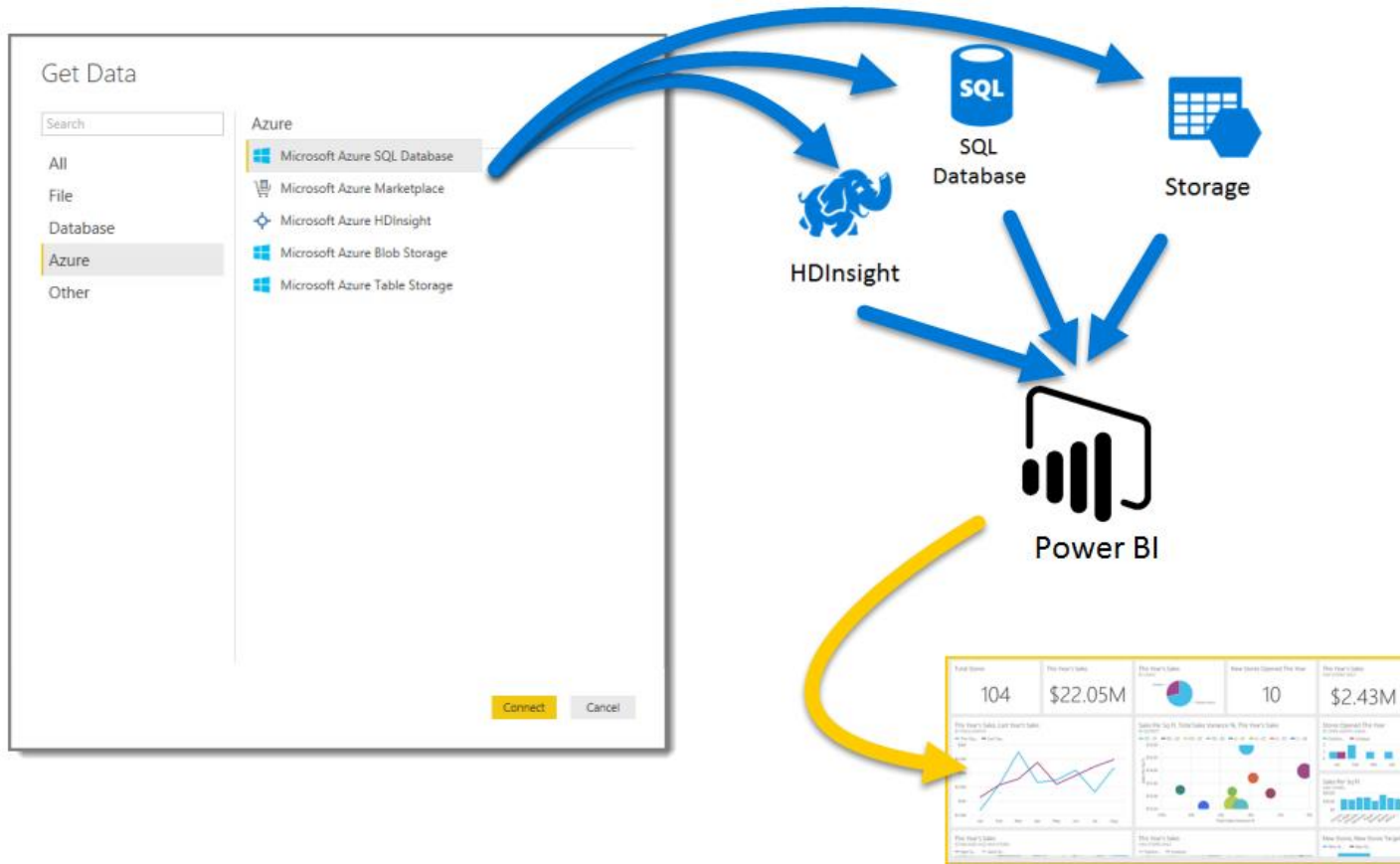


Power BI Architecture



Importing Data

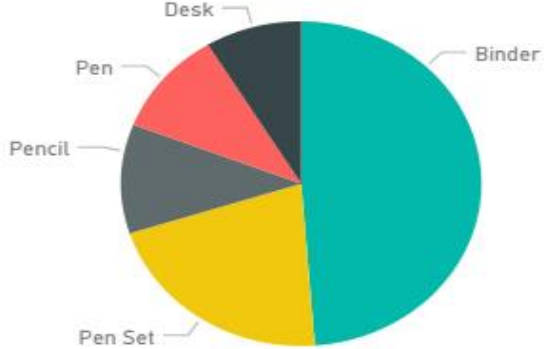




Report/ Dashboard

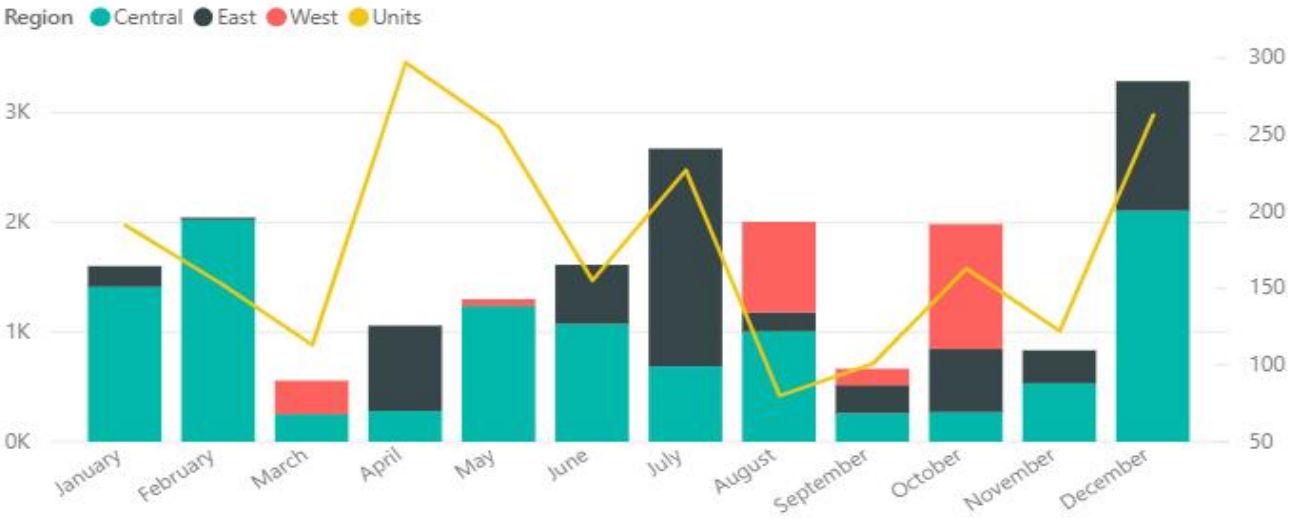


Total by Item

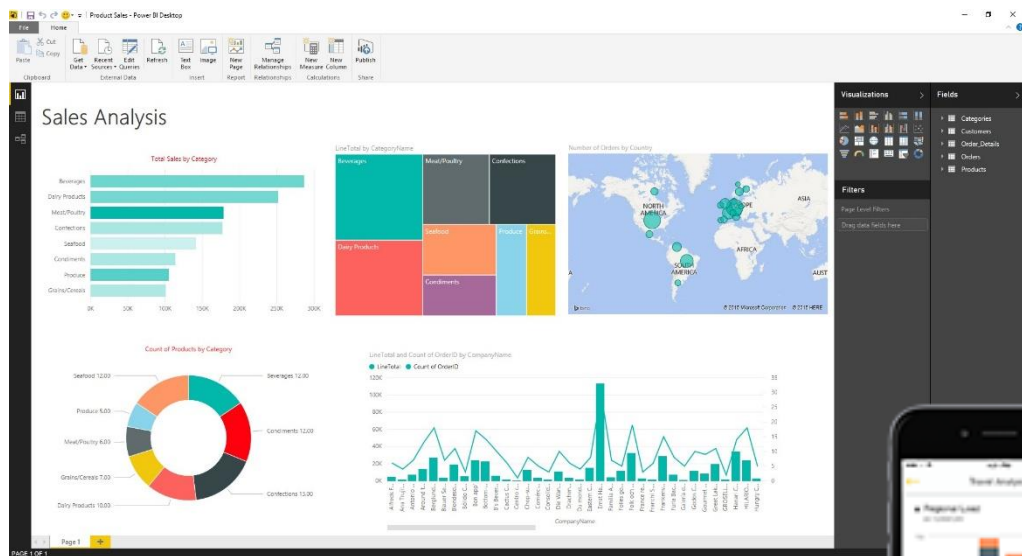


19.63K
Total

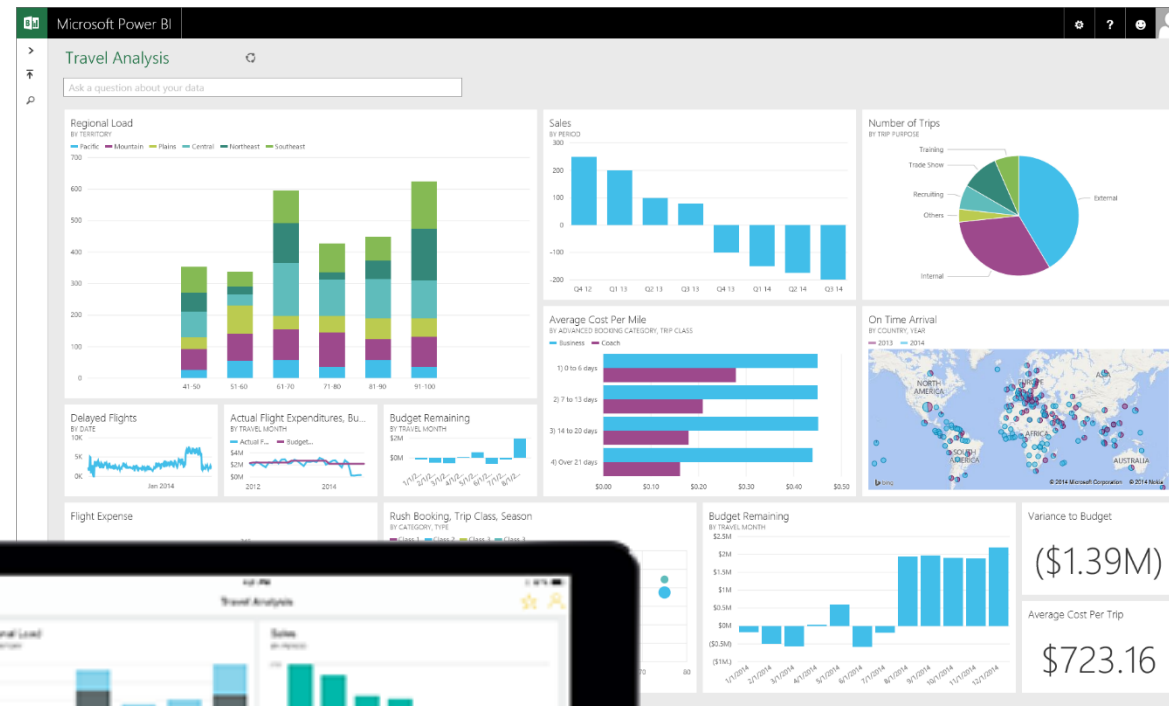
Total and Units by Month and Region



Access Points



Power BI Desktop



Power BI Server



Power BI Mobile

Power BI

- Power BI is a collection of Software sweets that are combined and launched by Microsoft in 2014.



 SharePoint



682346823
419371937
682346823
419371937

Raw Data



POWER QUERY
(Data Grabber/Shaper)



POWER PIVOT
(Data Cruncher / The Brain)



EXCEL PIVOTS/CHARTS/GRID
(Versatile, Ubiquitous, and Underrated)



POWER VIEW
(Interactive Explorer)




Q AND A
(Question Answerer)





POWER MAP
(Map Charter / Creator of "Tours")


Power BI Desktop


Power BI has recovered files that you might want to keep


 Show recovered files

 Get data

 Recent sources

 DI SN REPORT BI Team(Weekly).pbix
D: » Upload4 » Aj Work » DI Power Bi reports

 dashboard.pbix
C: » Users » ajsingh » Downloads

 Open other reports



Sign in to collaborate and share content

Power BI Pro enables you to collaborate across departments and distribute content to your organization. Sign in or sign up for a free 60-day trial.

Try free

Sign in

NEW UPDATE AVAILABLE

You can now download the latest version of Power BI Desktop. Learn more about the latest features.

POWER BI BLOG

Keep up to date with the latest news, resources, and updates from the Power BI team.

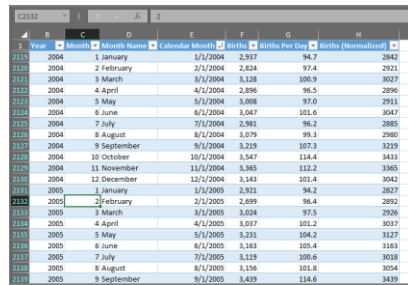
FORUMS

Visit the Power BI Forum to ask questions or interact with other users in the Power BI community.

TUTORIALS

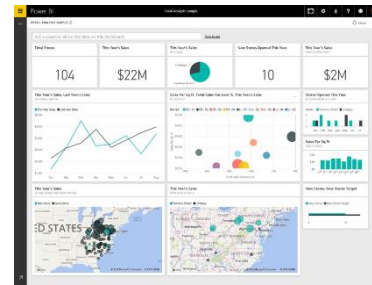
Ready to learn more about Power BI?

Building Blocks of Power BI



Year	Month	Calendar Month	Births	Births Per Day	Births (Normalized)
2004	1 January	1/1/2004	2,917	94.7	2942
2004	2 February	2/1/2004	2,824	97.4	2921
2004	3 March	3/1/2004	3,138	100.9	3027
2004	4 April	4/1/2004	2,896	96.5	2996
2004	5 May	5/1/2004	3,005	97.0	2911
2004	6 June	6/1/2004	3,047	101.6	3047
2004	7 July	7/1/2004	2,981	96.2	2985
2004	8 August	8/1/2004	3,079	99.3	2980
2004	9 September	9/1/2004	3,219	107.3	3219
2004	10 October	10/1/2004	3,547	114.4	3433
2004	11 November	11/1/2004	3,365	112.2	3365
2004	12 December	12/1/2004	3,143	101.4	3042
2005	1 January	1/1/2005	2,921	94.2	2927
2005	2 February	2/1/2005	2,899	96.4	2892
2005	3 March	3/1/2005	3,024	97.5	2926
2005	4 April	4/1/2005	3,037	101.2	3037
2005	5 May	5/1/2005	3,231	104.2	3127
2005	6 June	6/1/2005	3,183	105.4	3183
2005	7 July	7/1/2005	3,119	100.6	3018
2005	8 August	8/1/2005	3,156	101.8	3054
2005	9 September	9/1/2005	3,429	114.6	3429

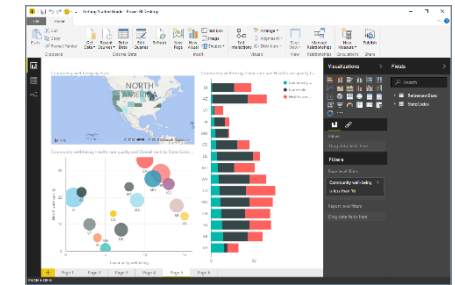
Datasets



Visualizations



Tiles

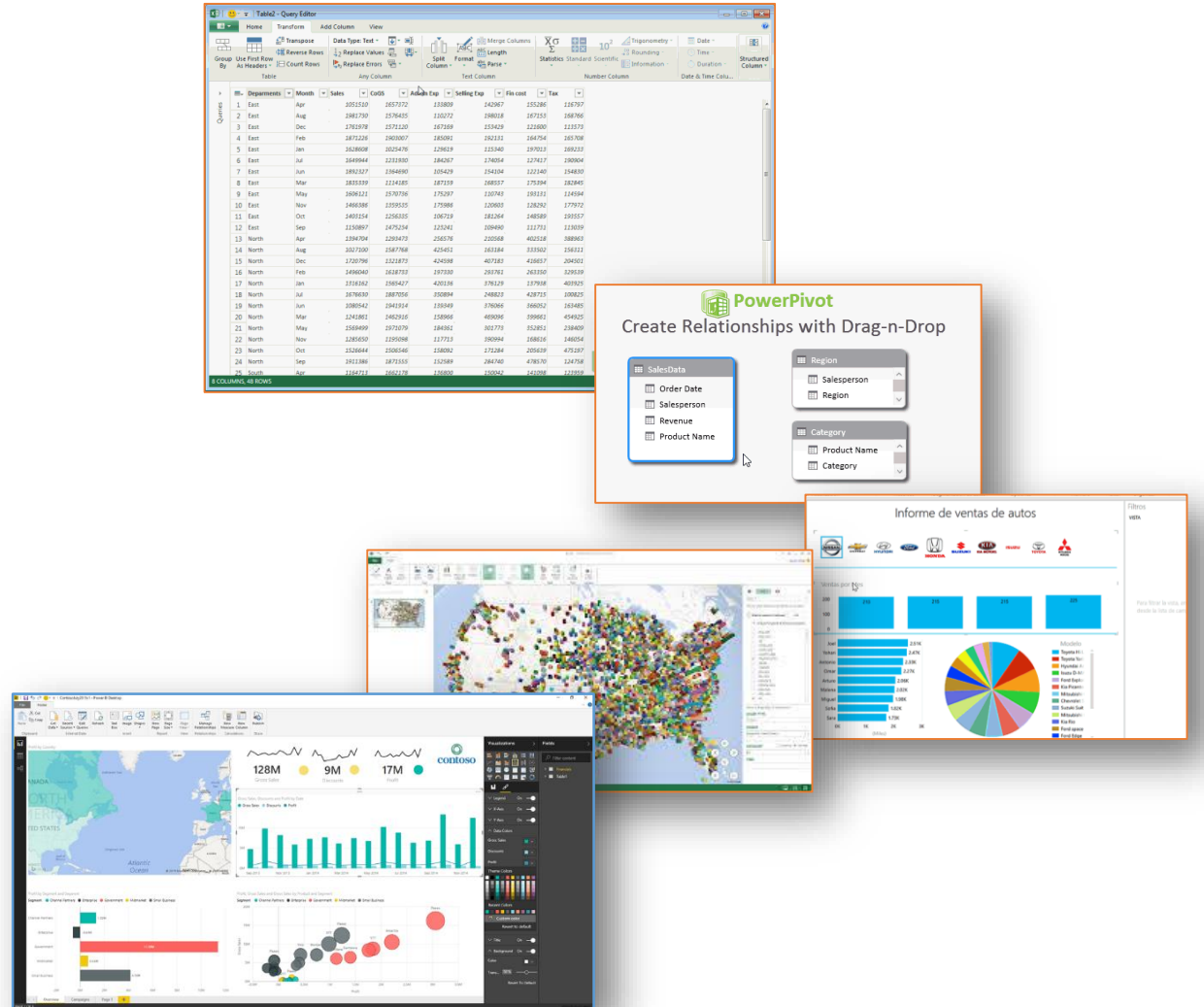


Reports


Dashboards

DAX In Depth



- Lookup Function
- Switch Function
- Filter Function
- All Function
- Iterative Functions
- Earlier Function
- Values Function
- Time Intelligence Functions
- Rank Function
- Advanced Slicer Techniques



Power BI Advantages over other tools in market:

Feature	Power BI	Other BI Tools								
License and Pricing	 <p>everything \$9.99</p>	<table border="1"><thead><tr><th colspan="2" data-bbox="1556 486 2214 539">Tableau Desktop</th></tr></thead><tbody><tr><td data-bbox="1556 539 1882 793">Personal Edition \$35 user/month (billed annually)</td><td data-bbox="1882 539 2214 793">Professional Edition \$70 user/month (billed annually)</td></tr><tr><th data-bbox="1556 793 1882 862">Tableau Server</th><th data-bbox="1882 793 2214 862">Tableau Online</th></tr><tr><td data-bbox="1556 862 1882 1162">On-Premises or Public Cloud \$35 user/month (billed annually)</td><td data-bbox="1882 862 2214 1162">Fully Hosted \$42 user/month (billed annually)</td></tr></tbody></table>	Tableau Desktop		Personal Edition \$35 user/month (billed annually)	Professional Edition \$70 user/month (billed annually)	Tableau Server	Tableau Online	On-Premises or Public Cloud \$35 user/month (billed annually)	Fully Hosted \$42 user/month (billed annually)
Tableau Desktop										
Personal Edition \$35 user/month (billed annually)	Professional Edition \$70 user/month (billed annually)									
Tableau Server	Tableau Online									
On-Premises or Public Cloud \$35 user/month (billed annually)	Fully Hosted \$42 user/month (billed annually)									

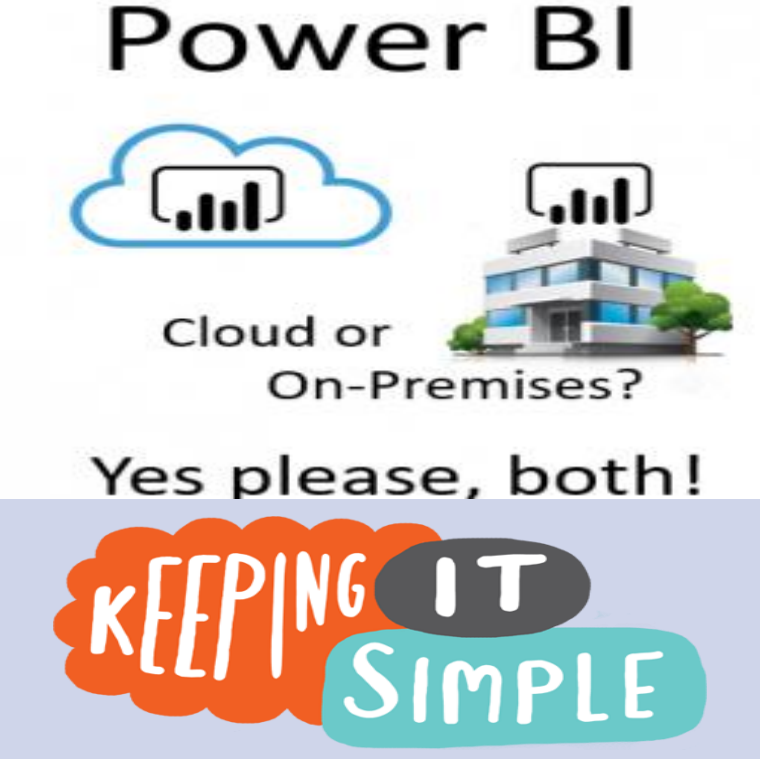
Power BI Advantages over other tools in market:

Feature	Power BI	Other BI Tools
Data Visualization	<p>Power BI provides a strong backend data manipulation feature with access to simple visualizations.</p> 	<p>Tableau provides strong data visualization and is one of the main data visualization tool in the market.</p> 

Power BI Advantages over other tools in market:

Feature	Power BI	Other BI Tools
Data Sources	<p>Power BI covers most of the data sources available in Tableau. It is closely integrated with Office 365, hence provides connectivity to SharePoint.</p> <div data-bbox="631 678 2379 1320" data-label="Image"> <p>The image displays a collection of logos for various data sources that Power BI can connect to. The logos are arranged in a grid-like fashion. In the top row, there are icons for Excel, SharePoint, Microsoft SQL Server, Azure SQL Database, and Azure HDInsight. The second row includes Access, OneDrive, Windows Azure Marketplace, OData, Hadoop, and Salesforce. The third row shows Active Directory, JSON, Facebook, PostgreSQL, Teradata, and Oracle. The bottom row contains XML, Sybase, IBM DB2, and MySQL.</p> </div>	<p>Tableau covers a vast range of data sources to connect with for data visualization. In Tableau, you select the dataset first and visualizations are used on the fly.</p>

Power BI Advantages over other tools in market:

Feature	Power BI	Other BI Tools
Implementation	<p>Power BI uses cloud storage and includes simple implementation process.</p>  <p>The image shows the text 'Power BI' at the top. Below it are two icons: a cloud with a bar chart and a building with a bar chart. The text 'Cloud or On-Premises?' is centered between the icons. Below that is 'Yes please, both!'. At the bottom is a graphic with the words 'KEEPING IT SIMPLE' in a stylized font.</p>	<p>Tableau provides different implementation types as per organizational needs panning from few hours to few weeks.</p>

Thank

you

