

**SAP R/3**

**Systems, Application &  
Products in Data processing**

# What is SAP?

SAP is an ERP System

ERP Stands for Enterprise Resource Planning

An ERP System is a collection of software programs which ties all of an enterprises various diverse functions (such as finance, sales, manufacturing, human resources) into a cohesive data base.

# Introduction to SAP - History

SAP stands for Systems, Applications, and Products in Data Processing

Founded in Germany by Five Former IBM Engineers in 1972

In 1988, SAP went public and became a joint-stock company, SAP AG

# Introduction to SAP

SAP Supports all Kinds of Industries and all Functions of the Industry

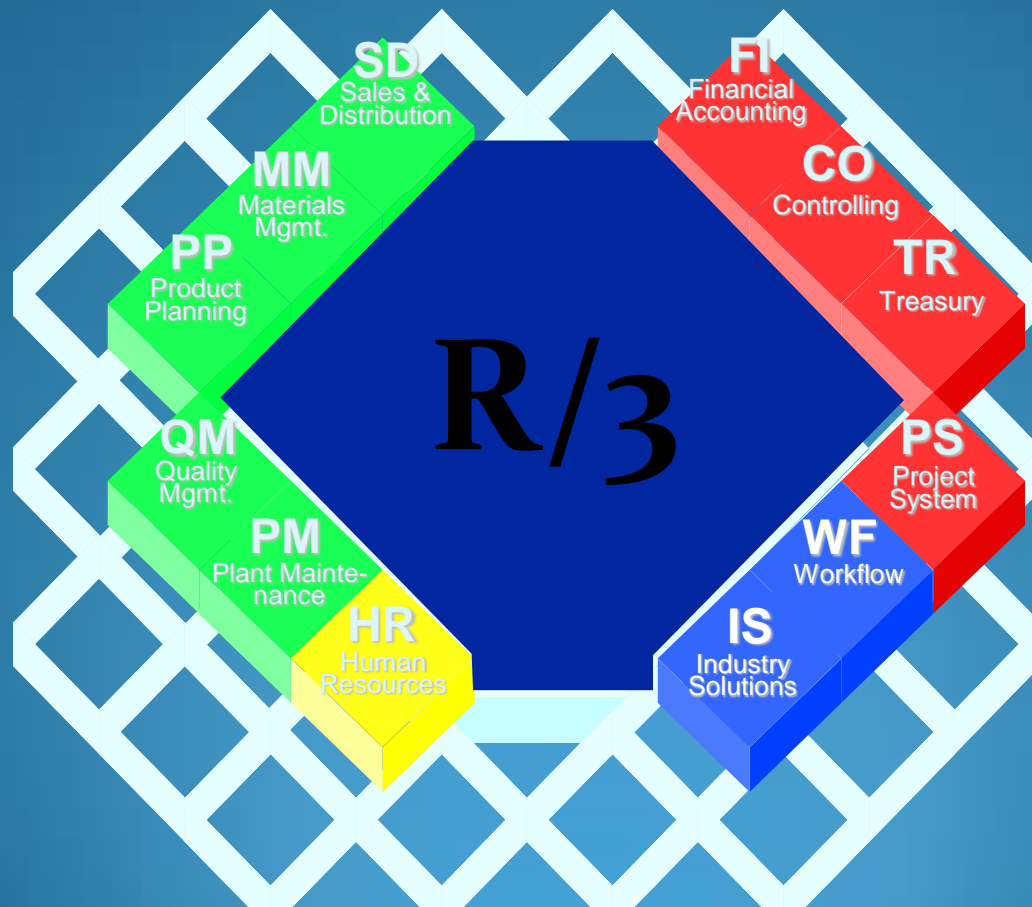
SAP is an Integrated System

This means that all SAP modules are designed to share information and automatically create transactions based on various business process.

SAP R/2 is the SAP Mainframe Based Software Package

SAP R/3 is the SAP Client/ Server – 3 Tier Architecture Based Software Package

# R/3 – A Comprehensive Business Solution



# Extending the Enterprise is Crucial for Survival

Buy Side  
Integration

Sell Side  
Integration

Enterprise  
Management



Supplier of  
my Supplier

Direct  
Supplier

Enterprise  
Resources

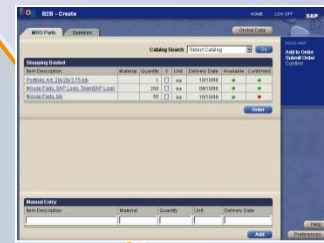
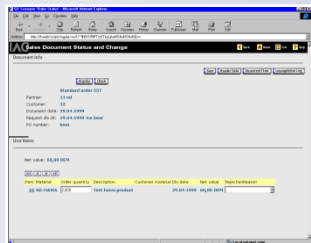
Direct  
Customer

Customer of  
my Customer

Manu-  
facturing  
Execution

Logistics  
Execution

Service  
Execution



Buying Market

Selling Market  
**mySAP.com**

# ASAP - methodology



# SAP HR and SAP HCM

## SAP HR

- SAP Module
- ABAP Codes
- R/2
- Recruitment
- Compensation
- Employee Desktop
- Mgr Desk top

## SAP HCM

SP Business Suite  
Web Based Tool  
R/3  
E Recruitment  
E Compensation  
ESS  
MSS





# Thank You

**Thank YOU for  
your time and attention**